

# CERTIFICATE OF LOCATION OF GOVERNMENT CORNER

County of Anoka

State of Minnesota

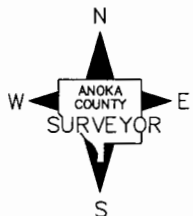
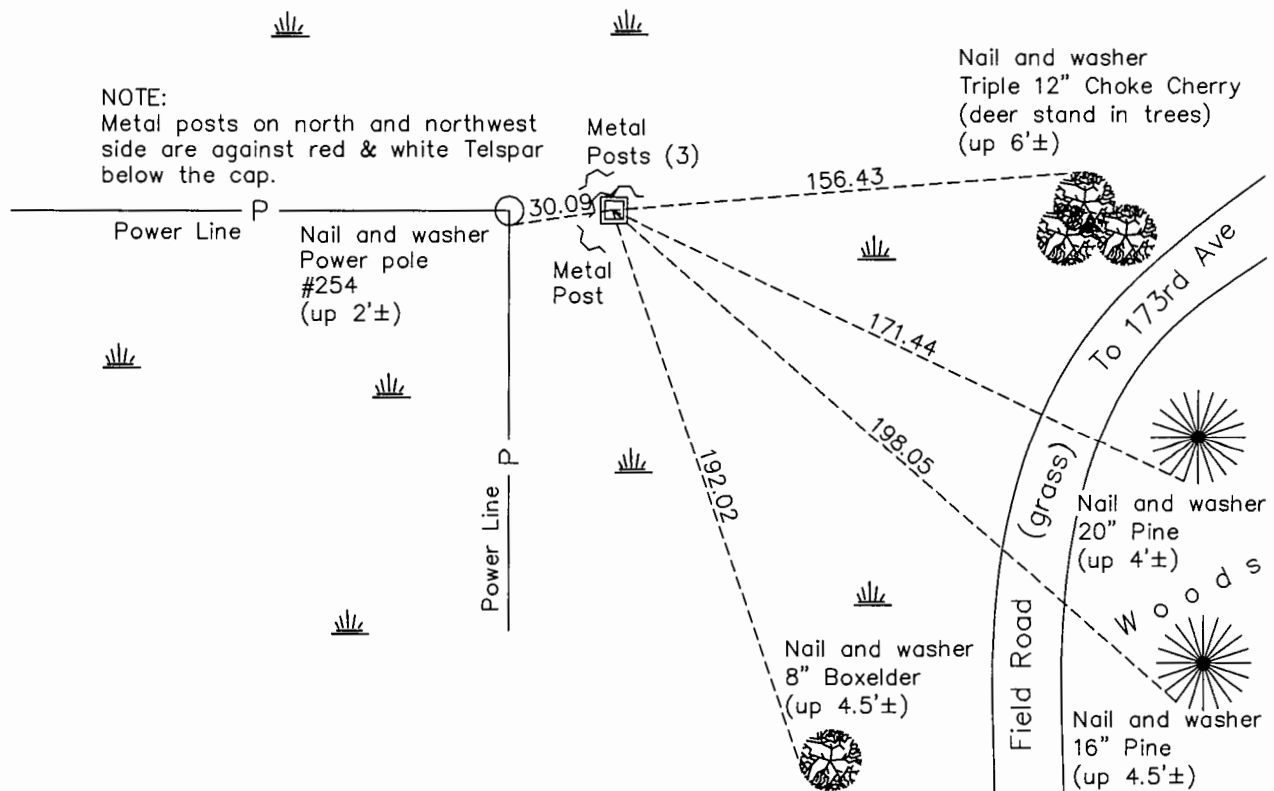
## Southwest Corner of Sec. 6 Township 32 Range 25

On the 20th day of August, 1968, the described corner was evidenced by a granite monument

and to perpetuate the location of said corner, at the exact location thereof, a permanent marker was placed consisting of red & white 2" sq. steel Telspar mont. w/ 'County Surveyor' cap & punchmark

AND on the 17th day of September, 2015, said permanent marker was found up 2'± and ties were updated.

Updated reference ties are as shown below.



Revision Date  
7/25/16

N.A.D. 1983 Coordinates  
(1996 Adjustment)

County Project Coordinates	
Northing	<u>191118.4505</u>
Easting	<u>436955.8772</u>
Date	<u>1/25/00</u>

I hereby certify that this United States public land survey monument record is correct and complete to the best of my knowledge and belief.

*Larry D. Hoium* Date 8/25/16

Larry D. Hoium, Anoka County Surveyor

Minnesota License Number 18165

# HISTORY OF GOVERNMENT CORNER

County of Anoka

State of Minnesota

## Southwest Corner of Sec. 6 Township 32 Range 25

### **CORNER HISTORY:**

**August 20, 1968** - Found 6" x 6" granite monument up 0.6'±. Set yellow fence post up 3'± on north side of monument and established ties to monument.

June 22, 1976 - Found granite monument and updated ties.

July 31, 1978 - Found granite monument and updated ties.

June 18, 1979 - Found granite monument and updated ties.

August 11, 1982 - Found granite monument and updated ties.

July 19, 1985 - Found granite monument and updated ties.

July 5, 1988 - Found granite monument and updated ties.

August 6, 1993 - Found granite monument and updated ties.

**January 25, 2000** - Found granite monument and established NAD 1983 (1996 Adjustment) Anoka County Project Coordinates by Static GPS methods. Updated ties.

**February 17, 2011** - Replaced granite monument with a red and white 2" square steel Telespar monument set up 1.5'± with a County Surveyor cap and punchmark. Updated ties. There are four posts near monument. Verified location of corner by VRS GPS methods.

**September 17, 2015** - Found Telespar monument up 2'± and updated ties. Verified location of corner by VRS GPS methods.