

# CERTIFICATE OF LOCATION OF GOVERNMENT CORNER

County of Anoka

State of Minnesota

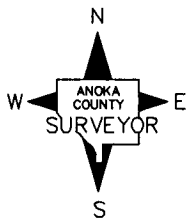
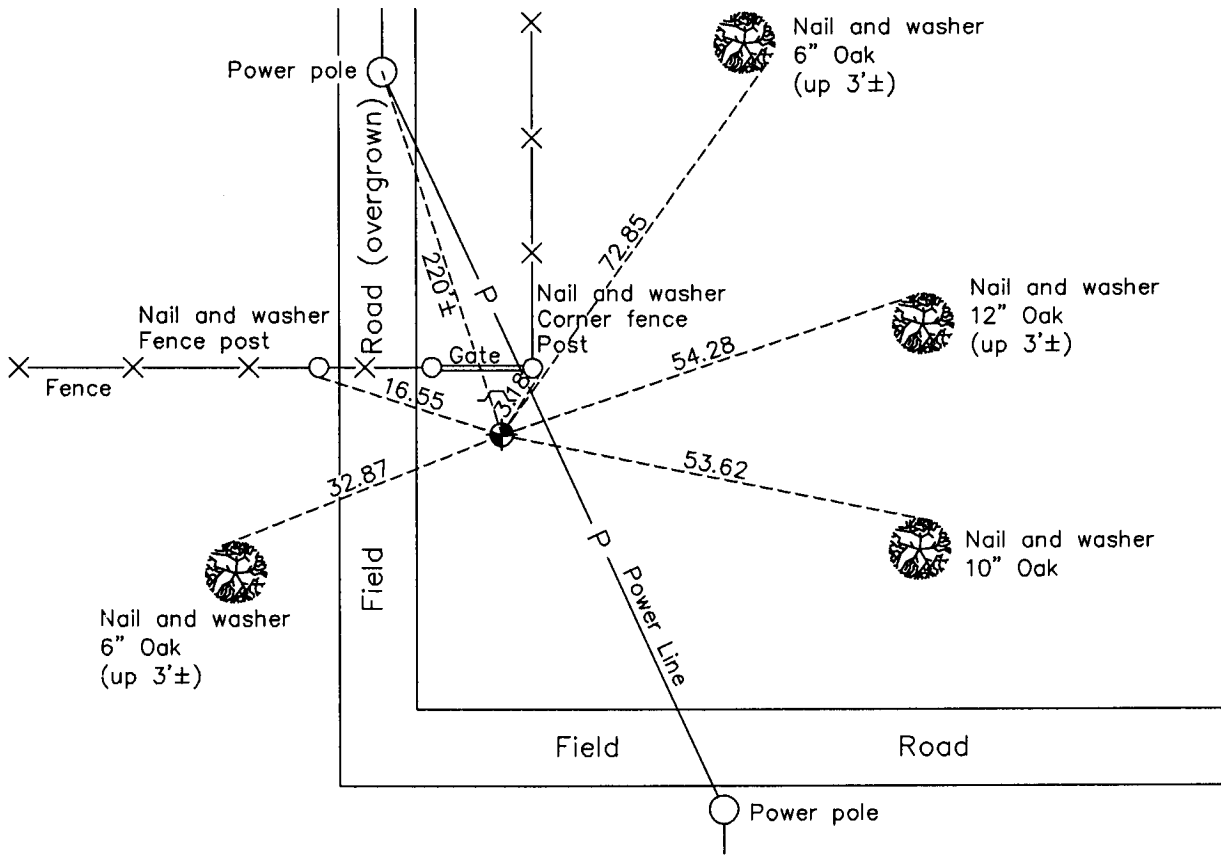
## West 1/4 Corner of Sec. 7 Township 32 Range 25

On the 27th day of November, 1968, the described corner was evidenced by area resurvey

and to perpetuate the location of said corner, at the exact location thereof, a permanent marker was placed consisting of a cast iron monument

AND on the 9th day of June, 2010, said permanent marker was found flush with a post and fiberglass marker on the north side and the ties were updated

Updated reference ties are as shown below.



Revision Date

6/24/10

N.A.D. 1983 Coordinates  
(1996 Adjustment)

County Project Coordinates	
Northing	188487.2295
Easting	436889.6702
Date	1/27/00

I hereby certify that this United States public land survey monument record is correct and complete to the best of my knowledge and belief.

*Larry D. Hoium* Date 6/24/10

Larry D. Hoium, Anoka County Surveyor

Minnesota License Number 18165

# HISTORY OF GOVERNMENT CORNER

County of Anoka

State of Minnesota

West 1/4 Corner of Sec. 7 Township 32 Range 25

**CORNER HISTORY:**

**November 27, 1968** - Set cast iron monument flush with the surface using area resurvey and established ties to monument.

June 11, 1969 - Found cast iron monument and updated ties.

August 3, 1972 - Found cast iron monument and updated ties.

June 24, 1976 - Found cast iron monument and updated ties.

June 28, 1979 - Found cast iron monument and updated ties.

August 11, 1982 - Found cast iron monument and updated ties.

June 15, 1988 - Found cast iron monument and updated ties.

August 25, 1993 - Found cast iron monument and updated ties.

January 27, 2000 - Found cast iron monument and established NAD 1983 (1996 Adjustment) Anoka County Project Coordinates by Static GPS methods. Updated ties.

June 9, 2010 - Found cast iron monument flush with the surface with a post and fiberglass marker on the north side of monument. Updated ties.