

CERTIFICATE OF LOCATION OF GOVERNMENT CORNER

County of Anoka

State of Minnesota

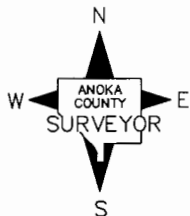
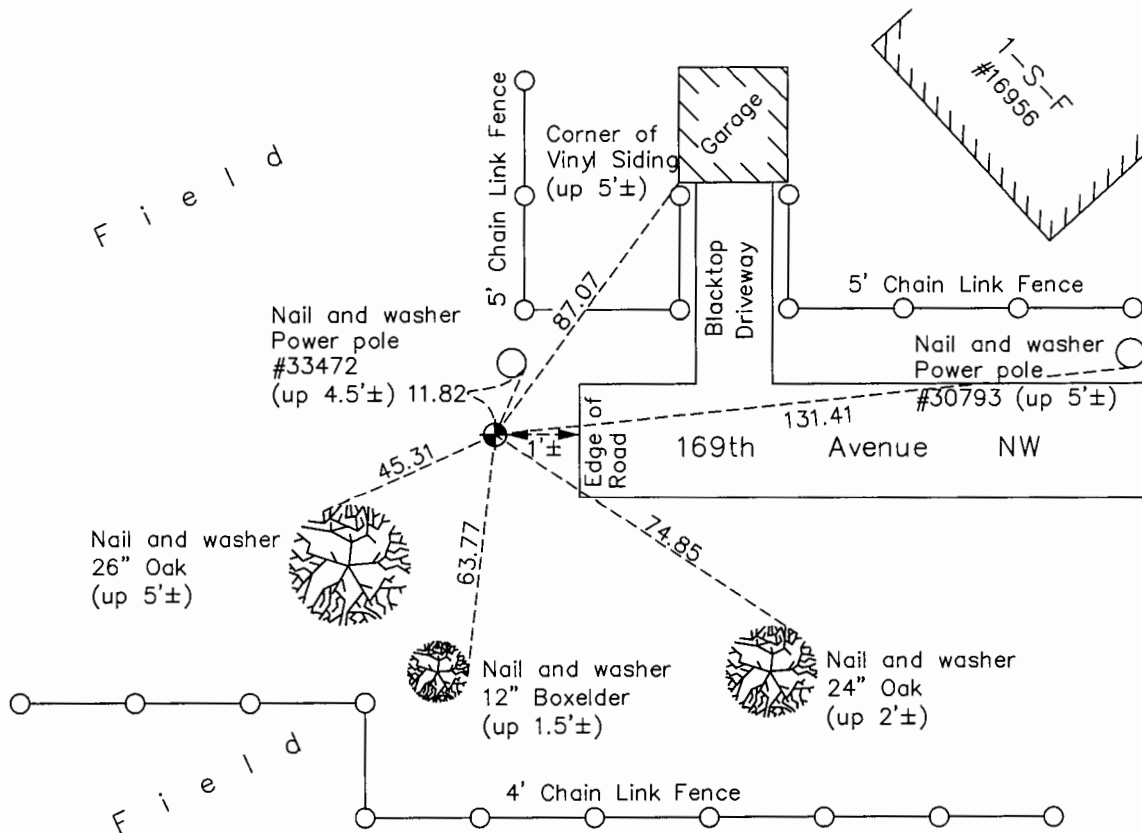
East 1/4 Corner of Sec. 7 Township 32 Range 25

On the 27th day of November, 1968, the described corner was evidenced by area resurvey

and to perpetuate the location of said corner, at the exact location thereof, a permanent marker was placed consisting of a cast iron monument

AND on the 20th day of July, 2015, said permanent marker was found down 0.1' and the ties were updated

Updated reference ties are as shown below.



Revision Date
7/25/16

N.A.D. 1983 Coordinates
(1996 Adjustment)

County Project Coordinates	
Northing	188420.1214
Easting	442309.3408
Date	1/03/00

I hereby certify that this United States public land survey monument record is correct and complete to the best of my knowledge and belief.

Larry D. Hoium Date 8/25/16

Larry D. Hoium, Anoka County Surveyor
Minnesota License Number 18165

HISTORY OF GOVERNMENT CORNER

County of Anoka

State of Minnesota

East 1/4 Corner of Sec. 7 Township 32 Range 25**CORNER HISTORY:**

November 27, 1968 - Set cast iron monument down 0.5'± using area resurvey and established ties to monument.

June 11, 1969 - Found cast iron monument and updated ties.

July 25, 1972 - Found cast iron monument and updated ties.

June 23, 1976 - Found cast iron monument and updated ties.

June 20, 1979 - Found cast iron monument and updated ties.

August 11, 1982 - Found cast iron monument and updated ties.

August 1, 1985 - Found cast iron monument and updated ties.

June 7, 1988 - Found cast iron monument and updated ties.

September 19, 1990 - Found cast iron monument and updated ties.

August 11, 1993 - Found cast iron monument and updated ties.

January 3, 2000 - Found cast iron monument and established NAD 1983 (1996 Adjustment) Anoka County Project Coordinates by Static GPS methods. Updated ties.

April 14, 2010 - Found cast iron monument down 0.1'± and updated ties.

July 20, 2015 - Found cast iron monument down 0.1'± and updated ties. Verified location of corner by VRS GPS methods.