

# CERTIFICATE OF LOCATION OF GOVERNMENT CORNER

County of Anoka

State of Minnesota

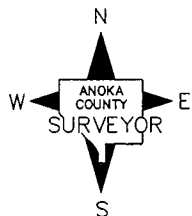
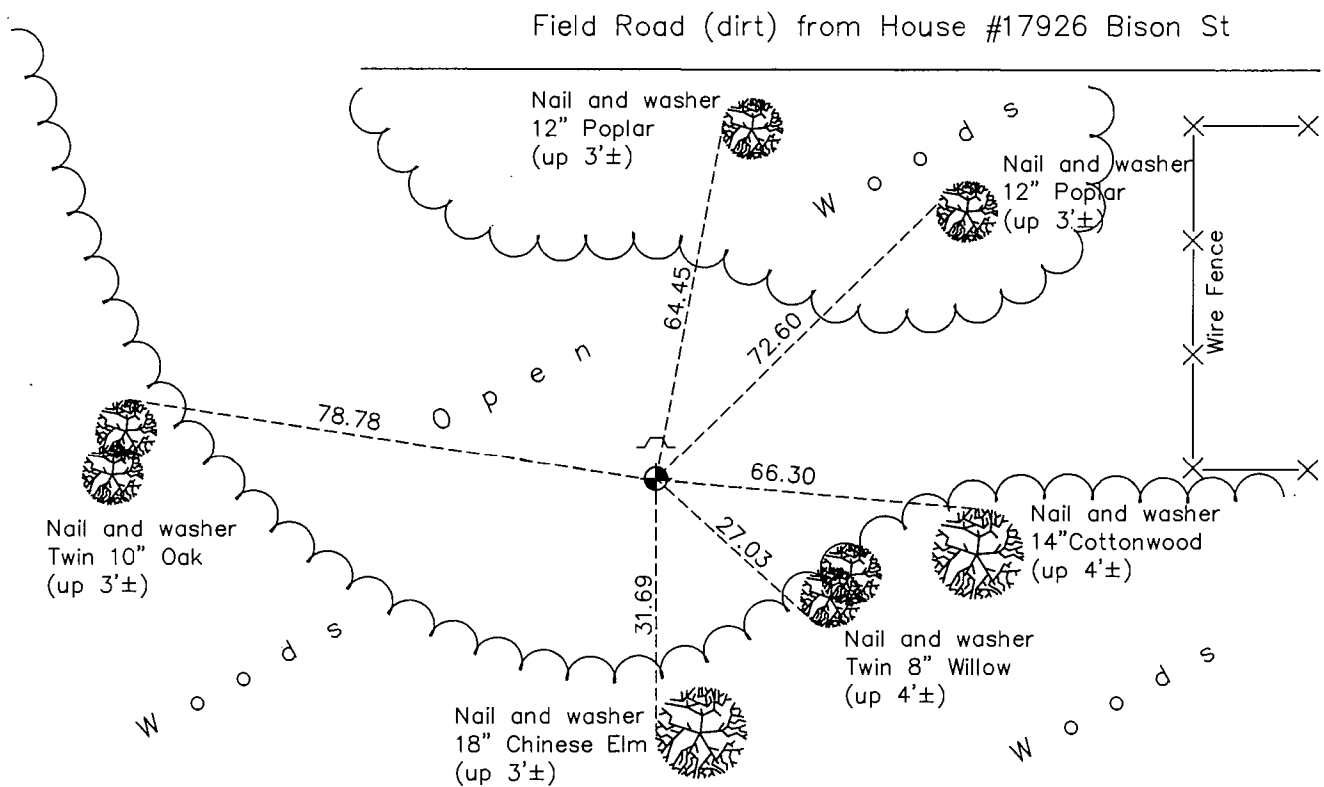
## East 1/4 Corner of Sec. 8 Township 32 Range 25

On the 18th day of May, 1969, the described corner was evidenced by area resurvey

and to perpetuate the location of said corner, at the exact location thereof, a permanent marker was placed consisting of a cast iron monument with a sign and post on the north side

AND on the 17th day of September, 2015, said permanent marker was found up 0.3' and the ties were updated

Updated reference ties are as shown below.



Revision Date

7/26/16

N.A.D. 1983 Coordinates  
(1996 Adjustment)

County Project Coordinates	
Northing	<u>188381.0818</u>
Easting	<u>447599.1154</u>
Date	<u>3/06/00</u>

I hereby certify that this United States public land survey monument record is correct and complete to the best of my knowledge and belief.

*Larry D. Hoium* Date 8/29/16

Larry D. Hoium, Anoka County Surveyor

Minnesota License Number 18165

# HISTORY OF GOVERNMENT CORNER

County of Anoka

State of Minnesota

East 1/4 Corner of Sec. 8 Township 32 Range 25

**CORNER HISTORY:**

**May 18, 1969** - Set cast iron monument flush with the surface using area resurvey and established ties to monument. Set steel fence post 0.5' south of monument.

July 20, 1972 - Found cast iron monument and updated ties.

June 24, 1976 - Found cast iron monument and updated ties.

June 27, 1979 - Found cast iron monument and updated ties.

August 11, 1982 - Found cast iron monument and updated ties.

July 31, 1985 - Found cast iron monument and updated ties.

July 7, 1988 - Found cast iron monument lying on ground. Reset cast iron monument and updated ties.

August 16, 1993 - Found cast iron monument and updated ties.

March 6, 2000 - Found cast iron monument down 1'± with a sign and post on the north side and established NAD 1983 ( 1996 Adjustment) Anoka County Project Coordinates by Static GPS methods. Updated ties.

June 2, 2010 - Found cast iron monument up 0.3'± with a sign and post on the north side and updated ties.

September 17, 2015 - Found cast iron monument up 0.3'± with a sign and post on the north side and updated ties.