

CERTIFICATE OF LOCATION OF GOVERNMENT CORNER

County of Anoka

State of Minnesota

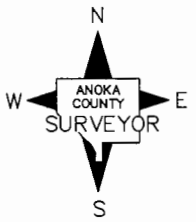
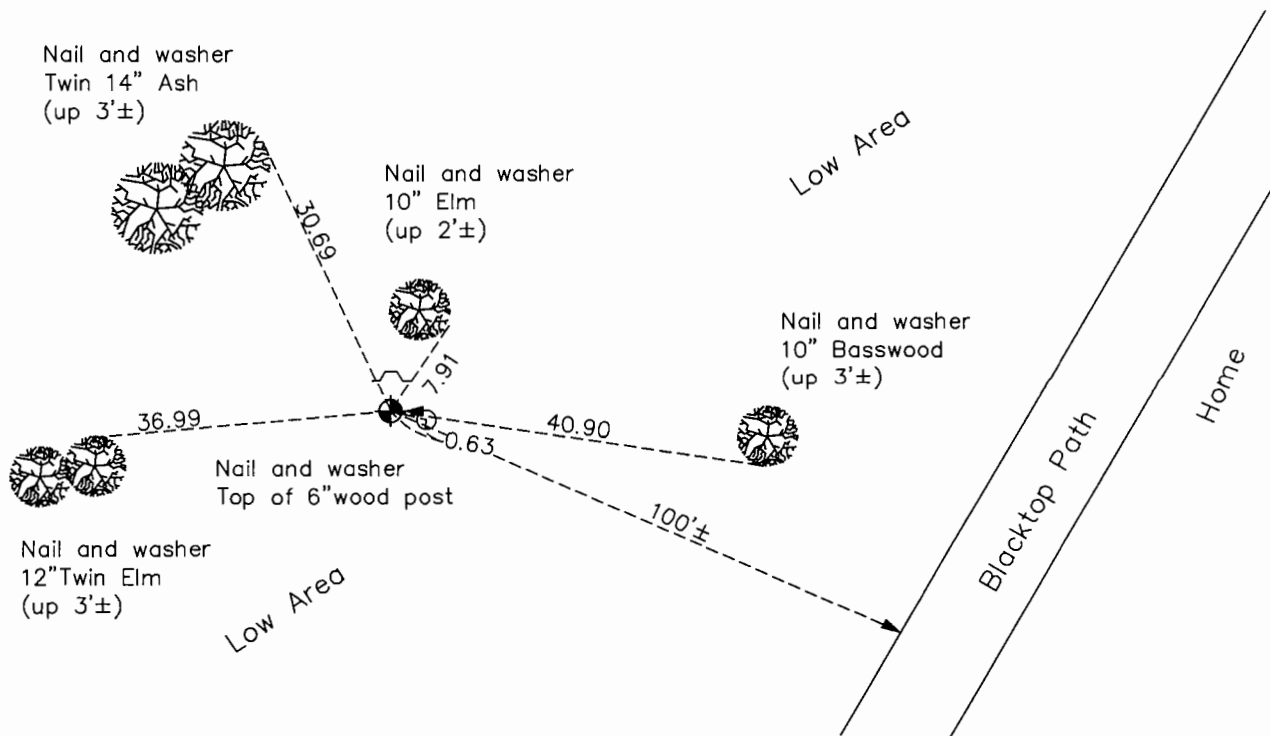
West 1/4 Corner of Sec. 10 Township 32 Range 25

On the 10th day of July, 1961, the described corner was evidenced by an iron pipe

and to perpetuate the location of said corner, at the exact location thereof, a permanent marker was placed consisting of a cast iron monument with a sign and post on the north side

AND on the 4th day of September, 2015, said permanent marker was found up 0.2' and the ties were updated

Updated reference ties are as shown below.



Revision Date
7/26/16

N.A.D. 1983 Coordinates
(1996 Adjustment)

County Project Coordinates	
Northing	<u>188313.5293</u>
Easting	<u>452818.8185</u>
Date	<u>1/04/00</u>

I hereby certify that this United States public land survey monument record is correct and complete to the best of my knowledge and belief.

Larry D. Hoium Date 8/25/16

Larry D. Hoium, Anoka County Surveyor

Minnesota License Number 18165

HISTORY OF GOVERNMENT CORNER

County of Anoka

State of Minnesota

West 1/4 Corner of Sec. 10 Township 32 Range 25

CORNER HISTORY:

July 10, 1961 - Set spike using a straight line and doubled the distance from the north 1/16th corner. Found old iron pipe under set spike. Replaced spike with cast iron monument and established ties to monument.

August 3, 1964 - Found cast iron monument with a 6" wood post on the east side and up 5'±. Updated ties.

June 19, 1969 - Found cast iron monument up 0.2'± and updated ties.

June 24, 1976 - Found cast iron monument and updated ties.

July 2, 1979 - Found cast iron monument and updated ties.

August 20, 1982 - Found cast iron monument and updated ties.

August 23, 1993 - Found cast iron monument and updated ties.

January 4, 2000 - Found cast iron monument with a sign and post on the north side and established NAD 1983 (1996 Adjustment) Anoka County Project Coordinates by Static GPS methods. Updated ties.

May 5, 2010 - Found cast iron monument up 0.2'± with a sign and post on the north side and updated ties.

September 4, 2015 - Found cast iron monument up 0.2'± with a sign and post on the north side and updated ties.