

CERTIFICATE OF LOCATION OF GOVERNMENT CORNER

County of Anoka

State of Minnesota

East 1/4 Corner of Sec. 10 Township 32 Range 25

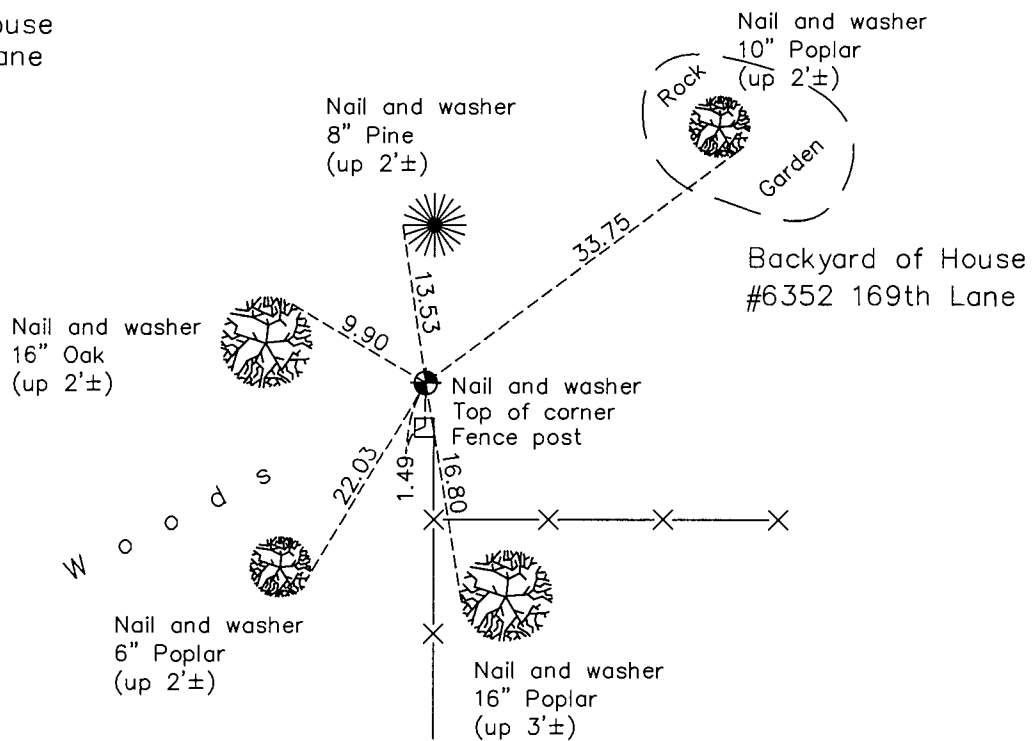
On the 25th day of July, 1961, the described corner was evidenced by area resurvey

and to perpetuate the location of said corner, at the exact location thereof, a permanent marker was placed consisting of a cast iron monument

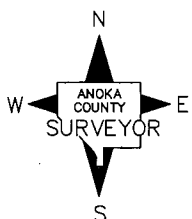
AND on the 4th day of September, 2015, said permanent marker was found and the ties
were updated

Updated reference ties are as shown below.

Backyard of House
 #6410 169th Lane



Backyard of House
 #6352 169th Lane



Revision Date

7/26/16

N.A.D. 1983 Coordinates
 (1996 Adjustment)

County Project Coordinates	
Northing	<u>188299.1649</u>
Easting	<u>458119.5230</u>
Date	<u>3/27/00</u>

I hereby certify that this United States public land survey monument record is correct and complete to the best of my knowledge and belief.

Larry D. Hoium Date 8/25/16

Larry D. Hoium, Anoka County Surveyor

Minnesota License Number 18165

HISTORY OF GOVERNMENT CORNER

County of Anoka

State of Minnesota

East 1/4 Corner of Sec. 10 Township 32 Range 25

CORNER HISTORY:

July 25, 1961 - Set cast iron monument using a straight line and equal distance between the NE corner and the SE corner of Section 10 and established ties to monument.

August 11, 1964 - Found cast iron monument and updated ties.

June 18, 1969 - Found cast iron monument up 0.1'± and updated ties.

August 17, 1972 - Found cast iron monument and updated ties.

June 25, 1976 - Found cast iron monument and updated ties.

July 2, 1979 - Found cast iron monument and updated ties.

August 20, 1982 - Found cast iron monument and updated ties.

November 9, 1983 - Found cast iron monument and updated ties.

November 15, 1983 - Found cast iron monument and updated ties.

July 22, 1985 - Found cast iron monument and updated ties.

July 12, 1988 - Found cast iron monument and updated ties.

August 13, 1993 - Found cast iron monument and updated ties.

March 27, 2000 - Found cast iron monument and established NAD 1983 (1996 Adjustment) Anoka County Project Coordinates by Static GPS methods. Updated ties.

May 12, 2010 - Found cast iron monument and updated ties.

September 4, 2015 - Found cast iron monument and updated ties.