

# CERTIFICATE OF LOCATION OF GOVERNMENT CORNER

County of Anoka

State of Minnesota

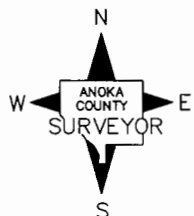
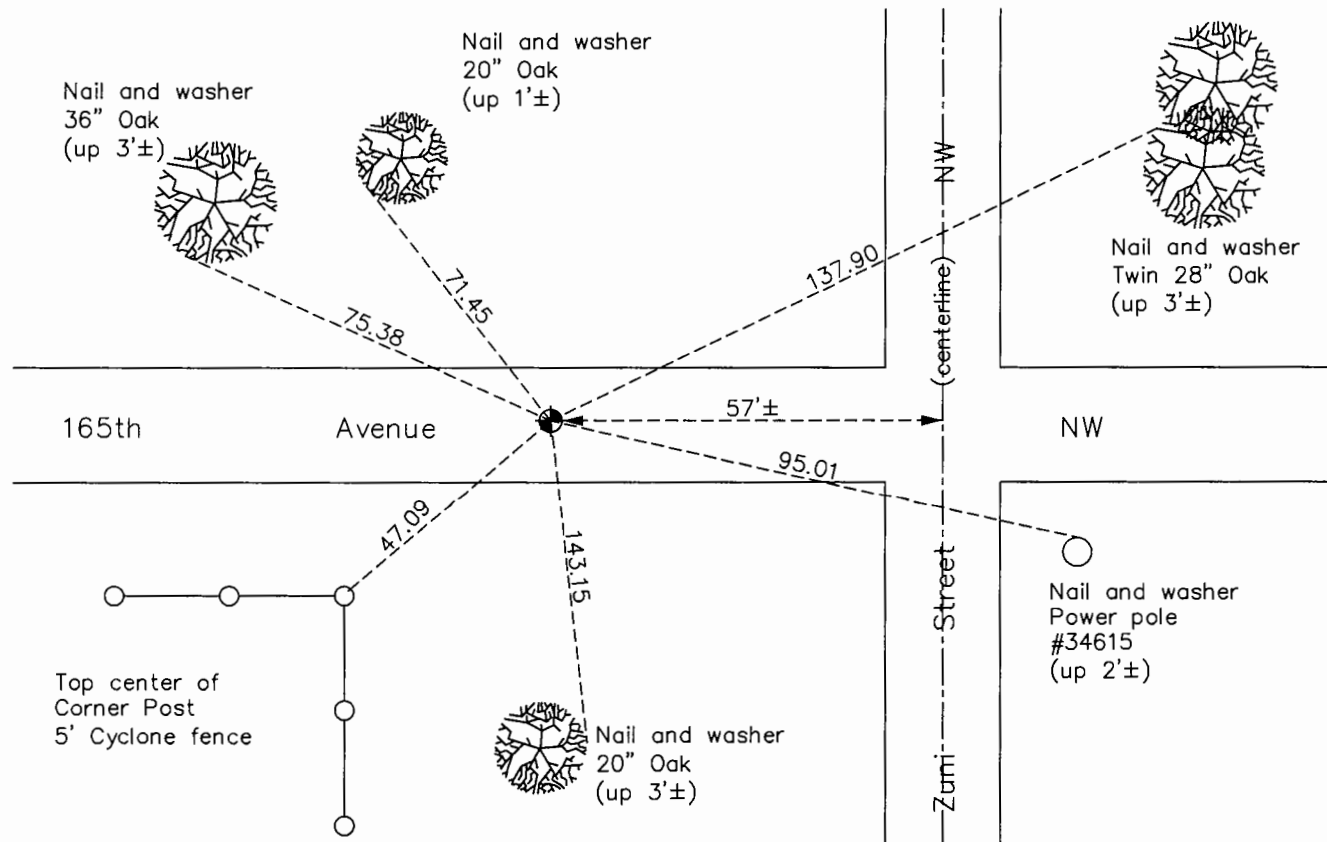
## South $\frac{1}{4}$ Corner of Sec. 12 Township 32 Range 25

On the 18th day of June, 1969, the described corner was evidenced by area resurvey

and to perpetuate the location of said corner, at the exact location thereof, a permanent marker was placed consisting of a cast iron monument

AND on the 12th day of August, 2015, said permanent marker was found and the ties  
were updated

Updated reference ties are as shown below.



Revision Date

7/26/16

N.A.D. 1983 Coordinates  
(1996 Adjustment)

County Project Coordinates	
Northing	<u>185662.6208</u>
Easting	<u>465995.8646</u>
Date	<u>1/05/00</u>

I hereby certify that this United States public land survey monument record is correct and complete to the best of my knowledge and belief.

*Larry D. Hoium* Date 8/25/16

Larry D. Hoium, Anoka County Surveyor

Minnesota License Number 18165

# HISTORY OF GOVERNMENT CORNER

County of Anoka

State of Minnesota

South 1/4 Corner of Sec. 12 Township 32 Range 25

**CORNER HISTORY:**

May 9, 1967 - Set cast iron monument using area resurvey and established ties to monument.

May 17, 1968 - Added and updated ties and removed cast iron monument prior to road construction.

July 30, 1968 - Set cast iron monument down 0.6'± after road construction and updated ties.

June 18, 1969 - Found cast iron monument down 0.7'± and updated ties.

August 16, 1972 - Found cast iron monument and updated ties.

June 25, 1976 - Found cast iron monument and updated ties.

June 18, 1979 - Found cast iron monument and updated ties.

August 18, 1982 - Found cast iron monument and updated ties.

July 14, 1985 - Found cast iron monument and updated ties.

January 5, 2000 - Found cast iron monument and established NAD 1983 (1996 Adjustment) Anoka County Project Coordinates by Static GPS methods. Updated ties.

May 28, 2010 - Found cast iron monument and updated ties.

August 12, 2015 - Found cast iron monument and updated ties. Verified location of corner by VRS GPS methods.