

CERTIFICATE OF LOCATION OF GOVERNMENT CORNER

County of Anoka

State of Minnesota

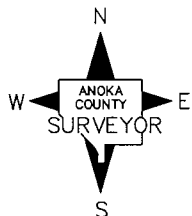
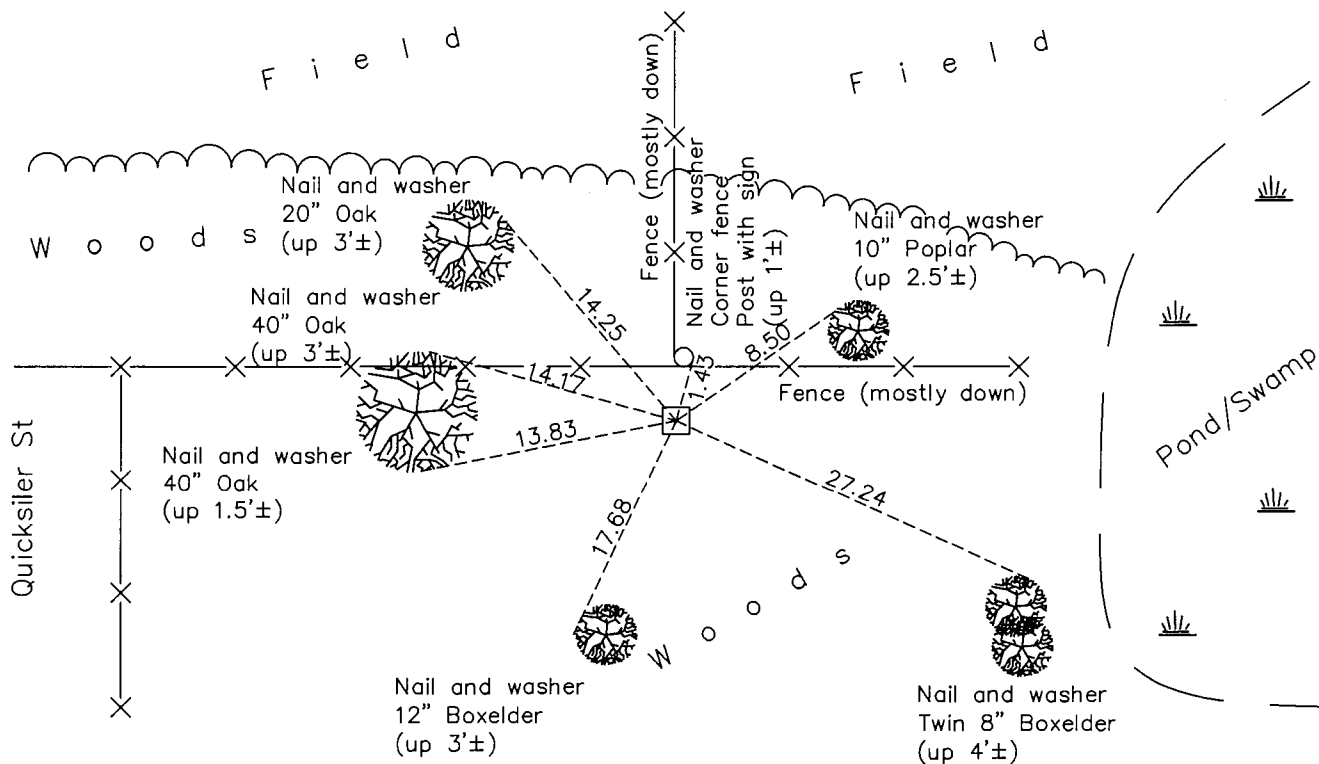
North $\frac{1}{4}$ Corner of Sec. 14 Township 32 Range 25

On the 2nd day of September, 1960, the described corner was evidenced by a concrete monument

and to perpetuate the location of said corner, at the exact location thereof, a permanent marker was placed consisting of the same concrete monument with a sign on a wood corner fence post on the north side

AND on the 29th day of September, 2015, said permanent marker was found down 1.1' and the ties were updated

Updated reference ties are as shown below.



Revision Date
7/26/16

N.A.D. 1983 Coordinates
(1996 Adjustment)

County Project Coordinates	
Northing	<u>185667.0772</u>
Easting	<u>460719.1308</u>
Date	<u>3/27/00</u>

I hereby certify that this United States public land survey monument record is correct and complete to the best of my knowledge and belief.

Date 8/25/16
 Larry D. Hoium, Anoka County Surveyor
 Minnesota License Number 18165

HISTORY OF GOVERNMENT CORNER

Page No. 50

County of Anoka

State of Minnesota

North 1/4 Corner of Sec. 14 Township 32 Range 25

CORNER HISTORY:

May 25, 1945 - Cartwright found concrete monument. Established ties to monument.

September 2, 1960 - Found concrete monument down 4" with an iron pipe on the north side of monument and updated ties.

August 10, 1964 - Found concrete monument and updated ties.

June 10, 1969 - Found concrete monument and updated ties.

August 21, 1972 - Found concrete monument and updated ties.

June 28, 1976 - Found concrete monument and updated ties.

June 19, 1979 - Found concrete monument and updated ties.

August 23, 1982 - Found concrete monument down 1'± with an iron pipe on the north side of monument and updated ties.

July 23, 1985 - Found concrete monument and updated ties.

July 12, 1988 - Found concrete monument down 1'± and updated ties.

August 13, 1993 - Found concrete monument and updated ties.

March 27, 2000 - Found concrete monument with wood fence post and sign 1.45' north of monument and established NAD 1983 (1996 Adjustment) Anoka County Project Coordinates by Static GPS methods. Updated ties.

May 18, 2010 - Found concrete monument down 1.1'± with post and sign 1.45' north of monument and updated ties.

September 29, 2015 - Found concrete monument down 1.1'± with post and sign north of monument and updated ties.