

# CERTIFICATE OF LOCATION OF GOVERNMENT CORNER

County of Anoka

State of Minnesota

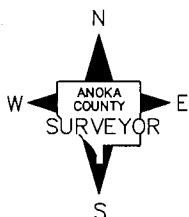
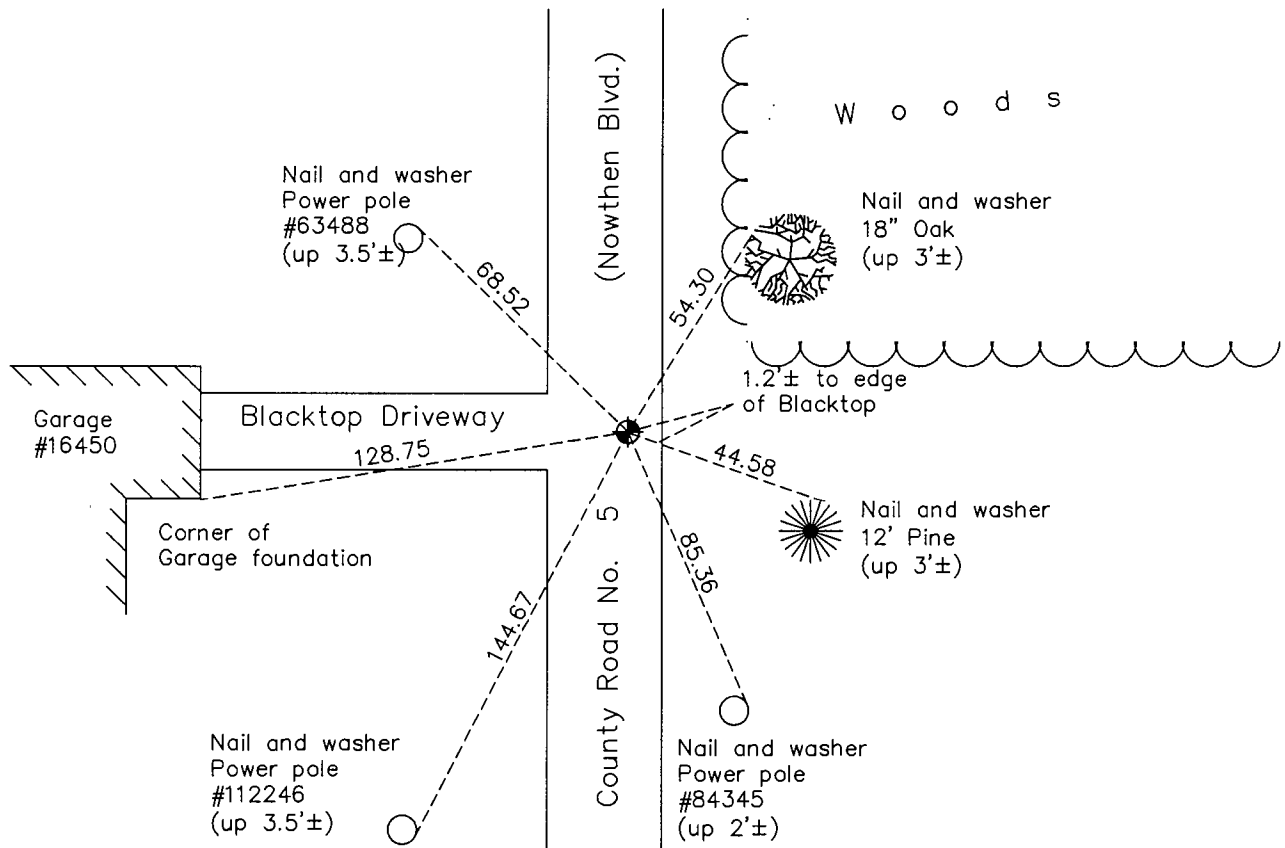
## South $\frac{1}{4}$ Corner of Sec. 10 Township 32 Range 25

On the 18th day of March, 1975, the described corner was evidenced by a cast iron monument

and to perpetuate the location of said corner, at the exact location thereof, a permanent marker was placed consisting of The same cast iron monument on the edge of edge of Blacktop

AND on the 27th day of July, 2015, said permanent marker was found down 0.8' ±  
Replaced solid CIM w/extendable CIM set flush w/ the surface and the ties were updated

Updated reference ties are as shown below.



Revision Date  
7/29/16

N.A.D. 1983 Coordinates  
 (1996 Adjustment)

County Project Coordinates	
Northing	185668.3279
Easting	455468.4743
Date	3/03/00

I hereby certify that this United States public land survey monument record is correct and complete to the best of my knowledge and belief.

*Larry D. Hoium* Date 8/30/16

Larry D. Hoium, Anoka County Surveyor  
 Minnesota License Number 18165

# HISTORY OF GOVERNMENT CORNER

County of Anoka

State of Minnesota

## South 1/4 Corner of Sec. 10 Township 32 Range 25

### **CORNER HISTORY:**

August 1, 1961 - Set cast iron monument in centerline of north bound lane with a nail and washer set 3.00' north and east of monument.. Established ties to monument.

August 3, 1964 - Found cast iron monument and updated ties.

June 9, 1969 - Found and raised cast iron monument. Updated ties.

July 19, 1972 - Found cast iron monument and updated ties.

March 18, 1975 - Found cast iron monument, reset after road construction, and updated ties.

June 28, 1976 - Found cast iron monument and updated ties.

June 15, 1979 - Found cast iron monument and updated ties.

August 23, 1982 - Found cast iron monument and updated ties.

June 16, 1988 - Found cast iron monument and updated ties.

August 6, 1993 - Found cast iron monument and updated ties.

March 3, 2000 - Found cast iron monument and established NAD 1983 ( 1996 Adjustment) Anoka County Project Coordinates by Static GPS methods. Updated ties.

April 28, 2010 - Found cast iron monument and updated ties.

July 23, 2015 - Found cast iron monument down 0.77'± and updated ties.

July 27, 2015 - Replaced solid cast iron monument with an extendible cast iron monument set flush with the surface and updated ties. Verified location of corner by VRS GPS methods.