

CERTIFICATE OF LOCATION OF GOVERNMENT CORNER

County of Anoka

State of Minnesota

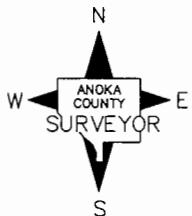
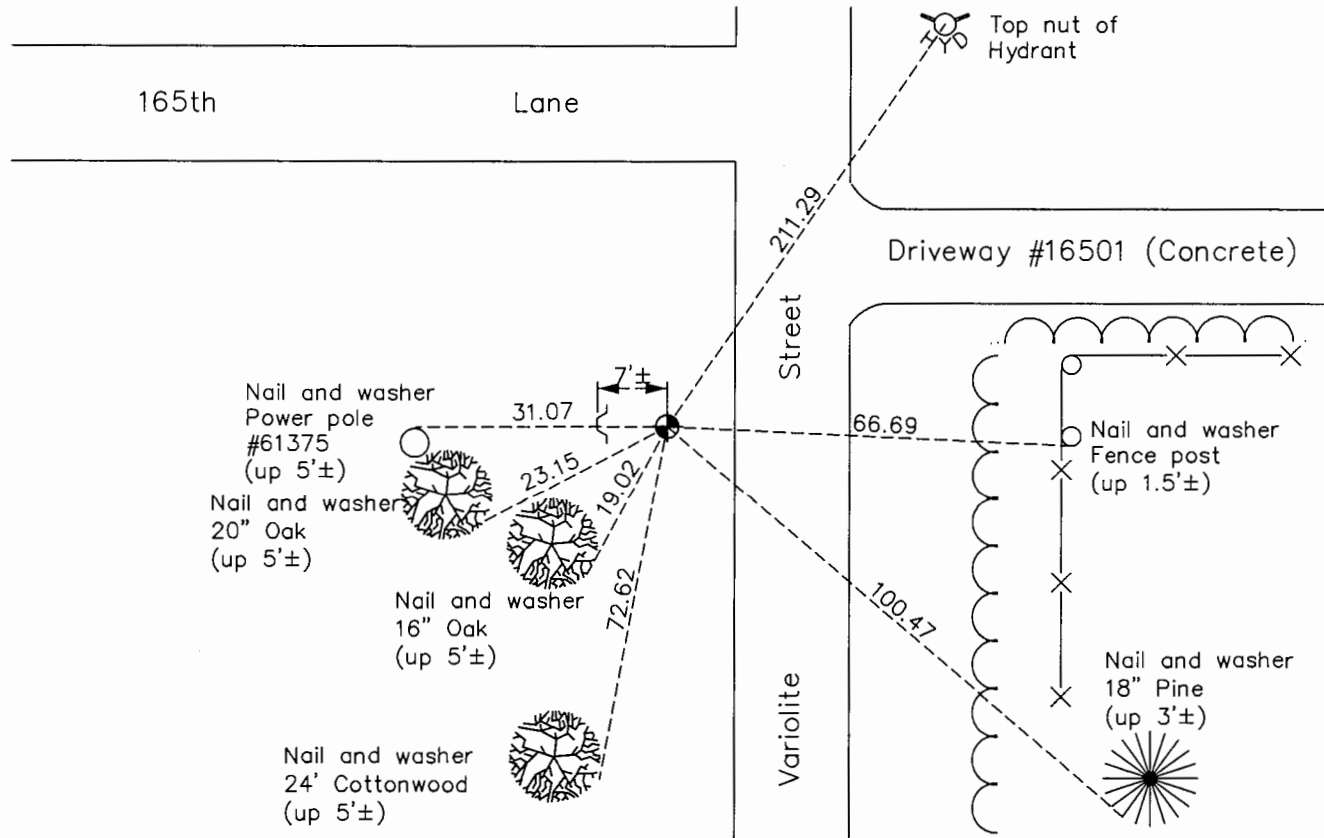
South $\frac{1}{4}$ Corner of Sec. 9 Township 32 Range 25

On the 2nd day of August, 1961, the described corner was evidenced by area resurvey

and to perpetuate the location of said corner, at the exact location thereof, a permanent marker was placed consisting of a cast iron monument with a sign and post on the west side

AND on the 4th day of September, 2015, said permanent marker was found down 0.2'± and the ties were updated

Updated reference ties are as shown below.



Revision Date
7/27/16

N.A.D. 1983 Coordinates
(1996 Adjustment)

County Project Coordinates	
Northing	185702.0549
Easting	450202.0578
Date	12/22/99

I hereby certify that this United States public land survey monument record is correct and complete to the best of my knowledge and belief.

Larry D. Hoium Date 8/25/16

Larry D. Hoium, Anoka County Surveyor

Minnesota License Number 18165

HISTORY OF GOVERNMENT CORNER

County of Anoka

State of Minnesota

South 1/4 Corner of Sec. 9 Township 32 Range 25

CORNER HISTORY:

August 2, 1961 - Found 2" iron pipe slightly bent and set flush with the surface. Straightened and established ties to pipe.

August 5, 1964 - Found 2" iron pipe and updated ties.

June 11, 1969 - Found 2" iron pipe and updated ties.

July 19, 1972 - Found 2" iron pipe and updated ties.

June 28, 1976 - Replaced 2" iron pipe with a cast iron monument and updated ties.

June 19, 1979 - Updated ties and removed cast iron monument prior to road construction.

May 21, 1980 - Set 1/2" iron pipe after road construction using ties.

April 7, 1981 - Replaced 1/2" iron pipe with a cast iron monument and updated ties.

May 6, 1987 - Replaced cast iron monument using ties. Set sign and post 1'± north of monument and updated ties.

June 7, 1988 - Found cast iron monument and updated ties.

August 9, 1993 - Found cast iron monument and updated ties.

December 22, 1999 - Found cast iron monument with a sign and post 7'± west of monument and established NAD 1983 (1996 Adjustment) Anoka County Project Coordinates by Static GPS methods. Updated ties.

April 9, 2010 - Found cast iron monument and updated ties.

September 4, 2015 - Found cast iron monument down 0.2'± with a sign and post 7'± west of monument and updated ties. Verified location of corner by VRS GPS methods.