

CERTIFICATE OF LOCATION OF GOVERNMENT CORNER

County of Anoka

State of Minnesota

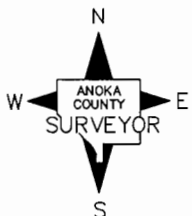
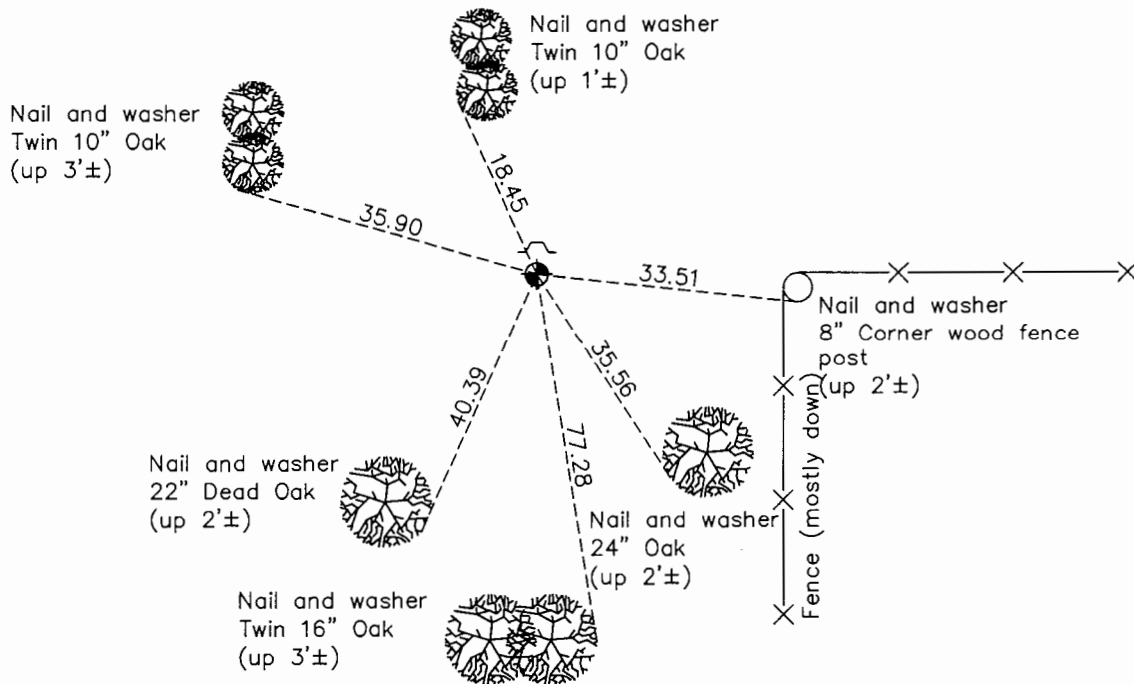
Northeast Corner of Sec. 17 Township 32 Range 25

On the 18th day of April, 1961, the described corner was evidenced by a 1/2" iron pipe

and to perpetuate the location of said corner, at the exact location thereof, a permanent marker was placed consisting of a cast iron monument with a sign and post on the north side

AND on the 13th day of August, 2015, said permanent marker was found flush and the ties were updated

Updated reference ties are as shown below.



Revision Date
7/27/16

N.A.D. 1983 Coordinates
(1996 Adjustment)

County Project Coordinates	
Northing	<u>185734.1551</u>
Easting	<u>447570.3385</u>
Date	<u>1/03/00</u>

I hereby certify that this United States public land survey monument record is correct and complete to the best of my knowledge and belief.

Larry D. Hoium Date 8/25/16

Larry D. Hoium, Anoka County Surveyor
Minnesota License Number 18165

HISTORY OF GOVERNMENT CORNER

County of Anoka

State of Minnesota

Northeast Corner of Sec. 17 Township 32 Range 25

CORNER HISTORY:

May 1952 - Egan, Field and Nowak found an iron pipe. Established ties to monument.

April 18, 1961 - Found 1/2" iron pipe with two ties remaining. Updated ties.

August 5, 1964 - Found 1/2" iron pipe down 0.4'± and updated ties.

June 11, 1969 - Replaced 1/2" iron pipe with a cast iron monument set up 0.1'±. Updated ties.

July 25, 1972 - Found cast iron monument and updated ties.

June 28, 1976 - Found cast iron monument and updated ties.

June 19, 1979 - Found cast iron monument and updated ties.

August 13, 1982 - Found cast iron monument and updated ties.

July 30, 1985 - Found cast iron monument and updated ties.

December 8, 1986 - Found cast iron monument and updated ties.

June 23, 1988 - Found cast iron monument and updated ties.

August 11, 1993 - Found cast iron monument and updated ties.

January 3, 2000 - Found cast iron monument with a sign and post on the north side and established NAD 1983 (1996 Adjustment) Anoka County Project Coordinates by Static GPS methods. Updated ties.

May 5, 2010 - Found cast iron monument flush with the surface and a sign and post on the north side. Updated ties.

August 13, 2015 - Found cast iron monument flush with the surface and a sign and post on the north side. Updated ties.