

# CERTIFICATE OF LOCATION OF GOVERNMENT CORNER

County of Anoka

State of Minnesota

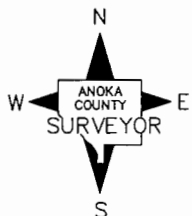
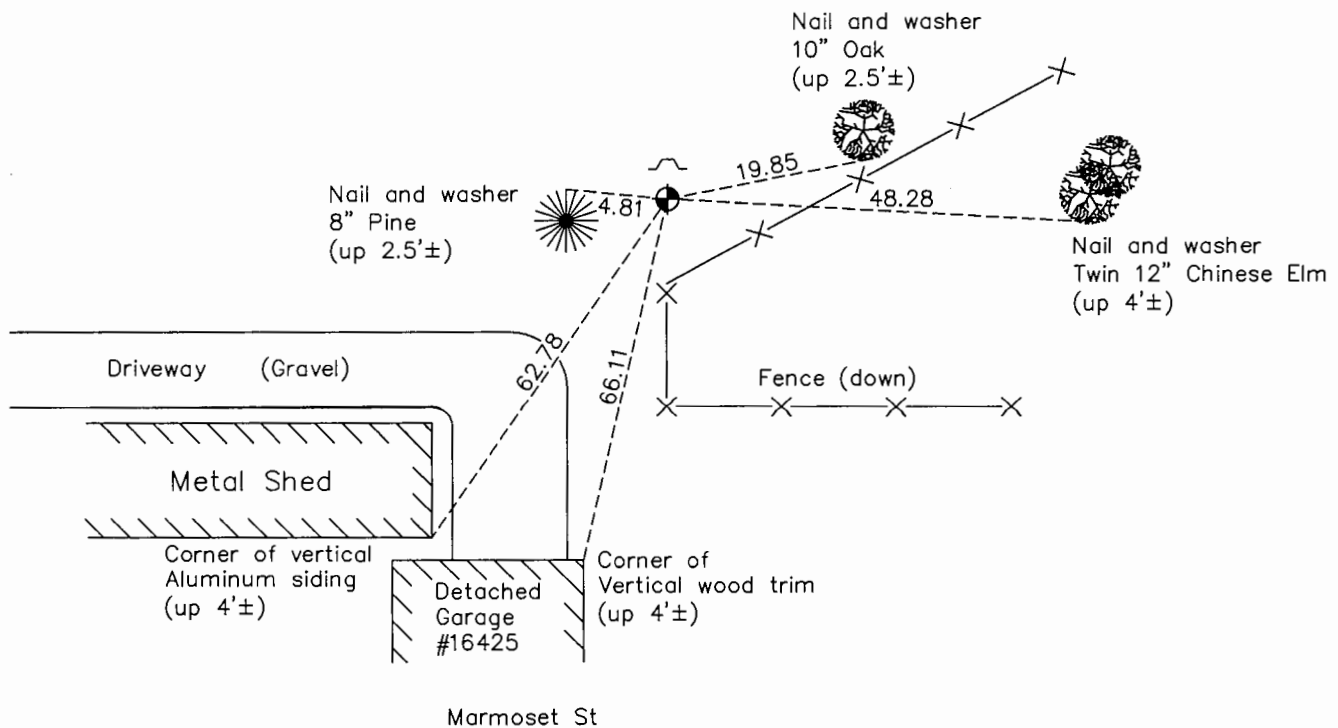
## North $\frac{1}{4}$ Corner of Sec. 17 Township 32 Range 25

On the 19th day of April, 1961, the described corner was evidenced by a 1/2" iron pipe

and to perpetuate the location of said corner, at the exact location thereof, a permanent marker was placed consisting of a cast iron monument with a sign and post on the north side

AND on the 13th day of August, 2015, said permanent marker was found flush and the ties were updated

Updated reference ties are as shown below.



Revision Date

7/27/16

N.A.D. 1983 Coordinates  
(1996 Adjustment)

County Project Coordinates	
Northing	<u>185762.7590</u>
Easting	<u>444906.7289</u>
Date	<u>1/03/00</u>

I hereby certify that this United States public land survey monument record is correct and complete to the best of my knowledge and belief.

*Larry D. Hoium* Date 8/25/16

Larry D. Hoium, Anoka County Surveyor

Minnesota License Number 18165

# HISTORY OF GOVERNMENT CORNER

Page No. 56

County of Anoka

State of Minnesota

North 1/4 Corner of Sec. 17 Township 32 Range 25

## **CORNER HISTORY:**

**May 1952** - Egan, Field and Nowak found corner location, type of monument unknown. Established ties to monument.

April 19, 1961 - Replaced 1/2" iron pipe with a cast iron monument and updated ties.

August 5, 1964 - Found cast iron monument and updated ties.

June 11, 1969 - Found cast iron monument and updated ties.

July 25, 1972 - Found cast iron monument and updated ties.

June 28, 1976 - Found cast iron monument and updated ties.

June 20, 1979 - Found cast iron monument and updated ties.

August 11, 1982 - Found cast iron monument and updated ties.

July 30, 1985 - Found cast iron monument and updated ties.

December 8, 1986 - Found cast iron monument and updated ties.

June 23, 1988 - Found cast iron monument and updated ties.

August 11, 1993 - Found cast iron monument and updated ties.

January 3, 2000 - Found cast iron monument and established NAD 1983 (1996 Adjustment) Anoka County Project Coordinates by Static GPS methods. Set a sign and post on the north side of monument and updated ties.

Date unknown - Found cast iron monument flush with the surface and updated ties.

August 13, 2015 - Found cast iron monument flush with the surface with a sign and post on the north side. Updated ties.