

CERTIFICATE OF LOCATION OF GOVERNMENT CORNER

County of Anoka

State of Minnesota

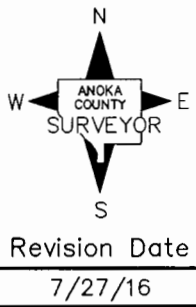
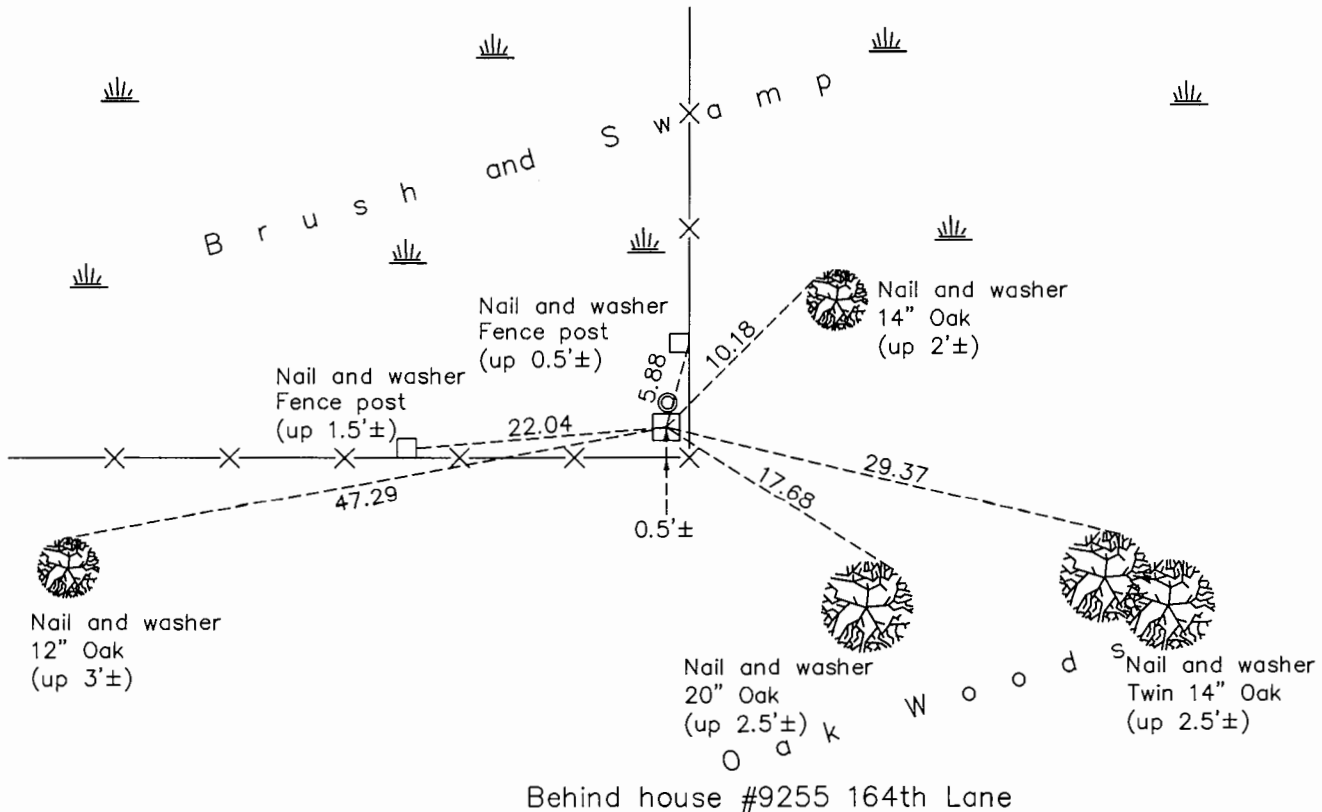
North 1/4 Corner of Sec. 18 Township 32 Range 25

On the 1st day of October, 1963, the described corner was evidenced by a concrete monument

and to perpetuate the location of said corner, at the exact location thereof, a permanent marker was placed consisting of the same concrete monument 0.5'± north of fence corner

AND on the 10th day of November, 2015, said permanent marker was found with a pinched iron pipe on the north side and the ties were updated

Updated reference ties are as shown below.



N.A.D. 1983 Coordinates
(1996 Adjustment)

County Project Coordinates	
Northing	<u>185823.0251</u>
Easting	<u>439585.6426</u>
Date	<u>1/28/00</u>

I hereby certify that this United States public land survey monument record is correct and complete to the best of my knowledge and belief.

Larry D. Hoium Date 8/25/16

Larry D. Hoium, Anoka County Surveyor

Minnesota License Number 18165

HISTORY OF GOVERNMENT CORNER

Page No. 58

County of Anoka

State of Minnesota

North 1/4 Corner of Sec. 18 Township 32 Range 25

CORNER HISTORY:

November 4, 1943 - Cartwright found concrete monument. Established ties to monument.

October 1, 1963 - Found 4" square concrete monument flush with the surface and updated ties.

August 7, 1964 - Found concrete monument and updated ties.

June 16, 1969 - Found concrete monument and updated ties.

August 2, 1972 - Found concrete monument and updated ties.

June 29, 1976 - Found concrete monument and updated ties.

October 15, 1976 - Found 4" square concrete monument flush with the surface and updated ties.

June 20, 1979 - Found concrete monument and updated ties.

August 11, 1982 - Found concrete monument and updated ties.

July 31, 1985 - Found concrete monument and updated ties.

June 15, 1988 - Found concrete monument and updated ties.

August 23, 1993 - Found concrete monument and updated ties.

January 28, 2000 - Found concrete monument and established NAD 1983 (1996 Adjustment) Anoka County Project Coordinates by Static GPS methods. Updated ties.

June 1, 2010 - Found concrete monument with a pinched iron pipe on the north side of monument and updated ties.

November 10, 2015 - Found concrete monument with a pinched iron pipe on the north side of monument and updated ties.