

CERTIFICATE OF LOCATION OF GOVERNMENT CORNER

County of Anoka

State of Minnesota

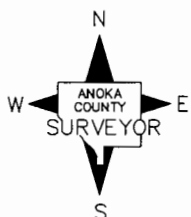
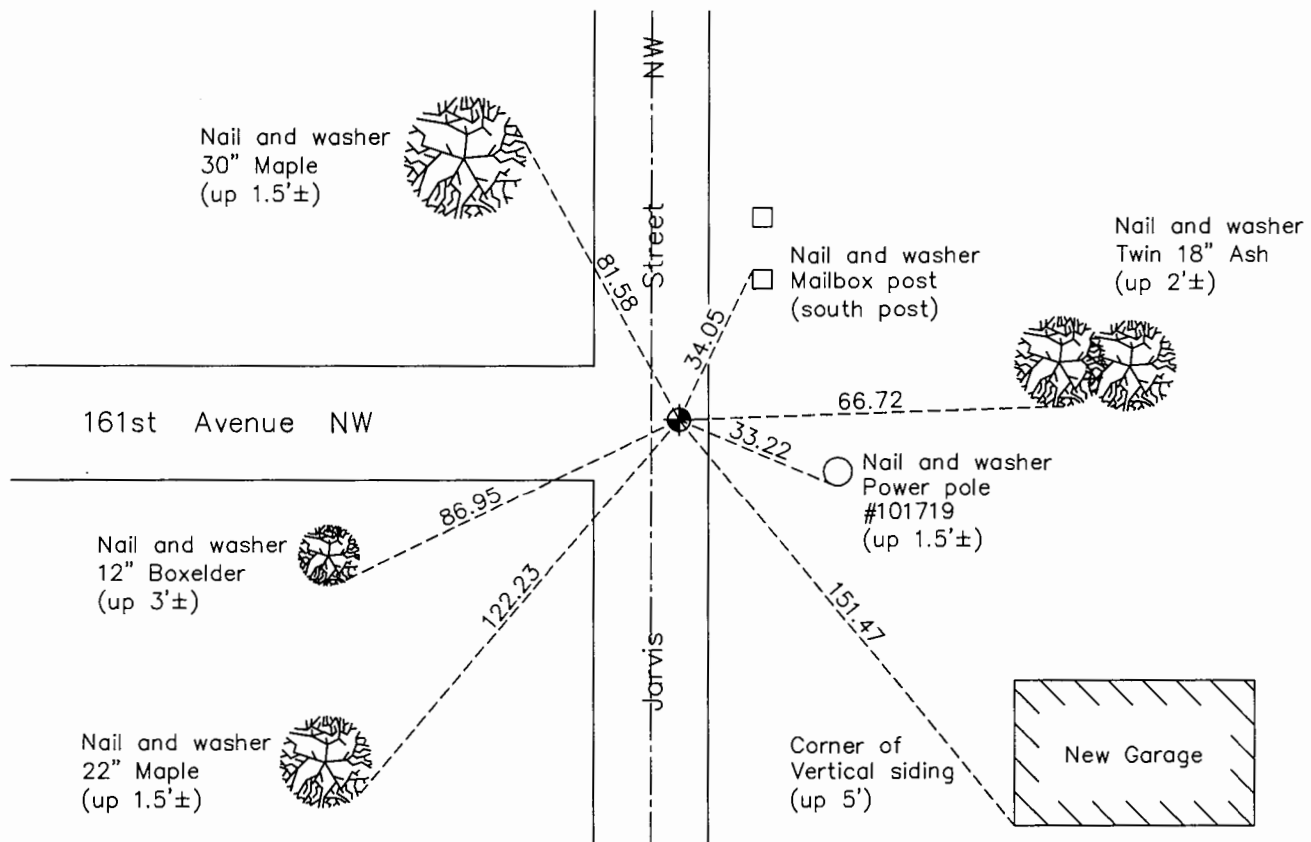
West 1/4 Corner of Sec. 18 Township 32 Range 25

On the 7th day of August, 1964, the described corner was evidenced by a concrete monument

and to perpetuate the location of said corner, at the exact location thereof, a permanent marker was placed consisting of a cast iron monument

AND on the 9th day of November, 2015, said permanent marker was found in centerline of northbound lane and the ties were updated

Updated reference ties are as shown below.



Revision Date

8/18/16

N.A.D. 1983 Coordinates
(1996 Adjustment)

County Project Coordinates	
Northing	183214.1413
Easting	436761.8340
Date	4/26/00

I hereby certify that this United States public land survey monument record is correct and complete to the best of my knowledge and belief.

Larry D. Hoium Date 8/19/16

Larry D. Hoium, Anoka County Surveyor

Minnesota License Number 18165

HISTORY OF GOVERNMENT CORNER

Page No. 60

County of Anoka

State of Minnesota

West 1/4 Corner of Sec. 18 Township 32 Range 25

CORNER HISTORY:

September 25, 1943 - Cartwright found concrete monument and established ties to monument.

April 17, 1961 - Found concrete monument flush with surface and updated ties to monument. Iron pipes found on north and south faces of concrete monument.

August 7, 1964 - Found concrete monument flush with surface and broken in half using one remaining Anoka County tie set April 17, 1961. Replaced broken concrete monument with a cast iron monument set down 0.4'± and updated ties.

June 13, 1969 - Found cast iron monument down 0.3'± and updated ties.

August 3, 1972 - Found cast iron monument down 0.2'± and updated ties.

June 28, 1976 - Found cast iron monument and updated ties.

June 21, 1979 - Found cast iron monument and updated ties.

August 11, 1982 - Found cast iron monument and updated ties.

July 30, 1985 - Found cast iron monument and updated ties.

June 9, 1988 - Found cast iron monument and updated ties.

September 25, 1989 - Found cast iron monument and updated ties.

August 12, 1993 - Found cast iron monument and updated ties.

April 26, 2000 - Found cast iron monument and established NAD 1983 (1996 Adjustment) Anoka County Project Coordinates by Static GPS methods. Updated ties.

April 28, 2010 - Found cast iron monument in center of northbound lane and updated ties.

September 16, 2015 - Found cast iron monument missing due to road construction.

October 26, 2015 - Reset position of corner with a P.K. nail using VRS GPS methods. Updated ties.

November 9, 2015 - Found that an Anoka County cast iron monument had been reset, possibly by Sherburne County. Verified position by Static GPS methods and updated ties.