

CERTIFICATE OF LOCATION OF GOVERNMENT CORNER

County of Anoka

State of Minnesota

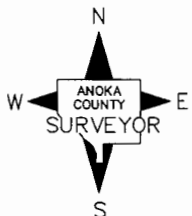
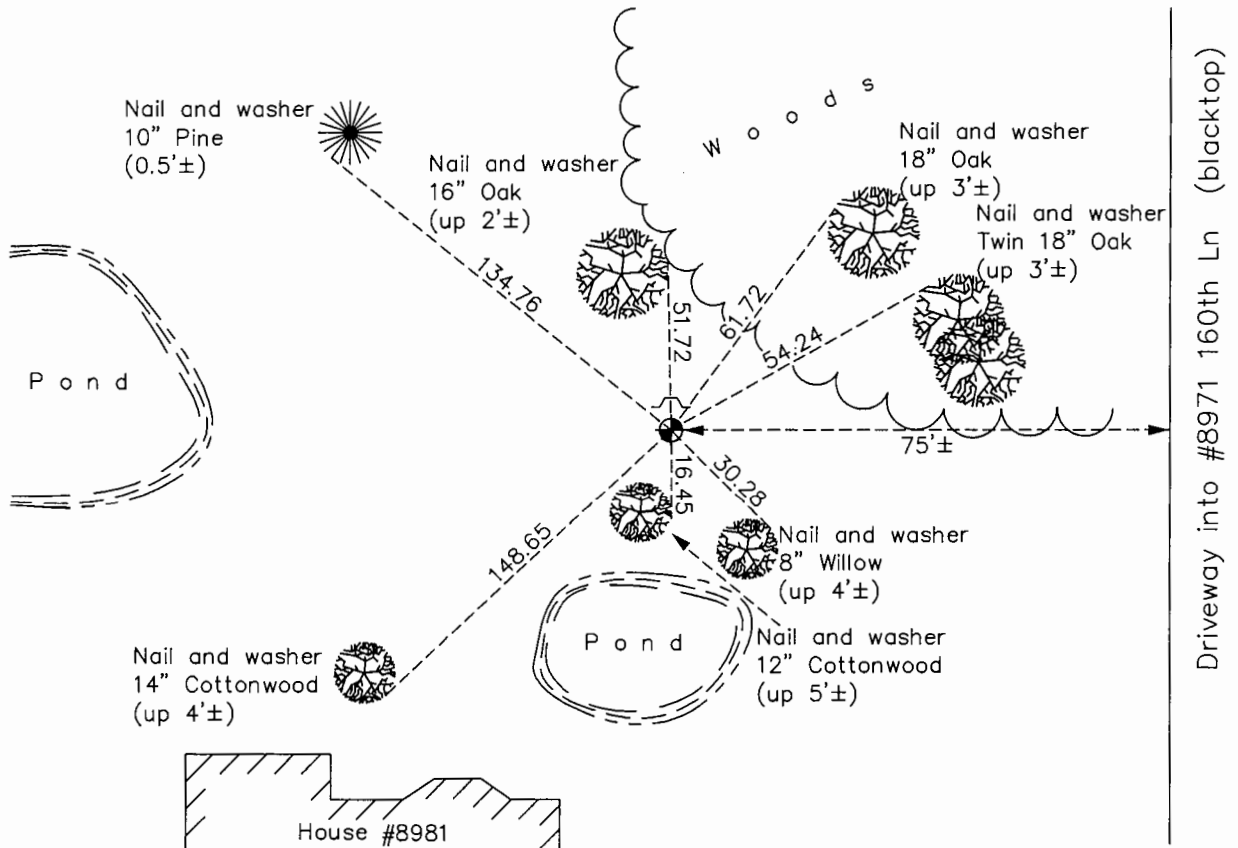
East 1/4 Corner of Sec. 18 Township 32 Range 25

On the 18th day of April, 1961, the described corner was evidenced by a concrete monument

and to perpetuate the location of said corner, at the exact location thereof, a permanent marker was placed consisting of a cast iron monument with a sign and post on the north side

AND on the 16th day of September, 2015, said permanent marker was found down 0.6' and the ties were updated

Updated reference ties are as shown below.



Revision Date

8/1/16

N.A.D. 1983 Coordinates
(1996 Adjustment)

County Project Coordinates	
Northing	183185.9897
Easting	442229.1183
Date	4/25/00

I hereby certify that this United States public land survey monument record is correct and complete to the best of my knowledge and belief.

Larry D. Hoium Date 8/25/16

Larry D. Hoium, Anoka County Surveyor
Minnesota License Number 18165

HISTORY OF GOVERNMENT CORNER

Page No. 61

County of Anoka

State of Minnesota

East 1/4 Corner of Sec. 18 Township 32 Range 25

CORNER HISTORY:

November 4, 1943 - Cartwright found concrete monument set flush with the surface. Established ties to monument.

April 18, 1961 - Found concrete monument with top 0.3' broken off and updated ties. Set 1/2" iron pipes on the north and south side of monument.

August 7, 1964 - Found concrete monument and updated ties.

June 16, 1969 - Replaced broken concrete monument with a cast iron monument set flush with the surface. Updated ties.

August 2, 1972 - Found cast iron monument and updated ties.

June 29, 1976 - Found cast iron monument and updated ties.

June 20, 1979 - Found cast iron monument and updated ties.

August 12, 1982 - Found cast iron monument and updated ties.

June 9, 1988 - Found cast iron monument and updated ties.

August 12, 1993 - Found cast iron monument with a sign and post on the north side and updated ties.

May 9, 1996 - Found cast iron monument with a sign and post on the north side and updated ties.

April 25, 2000- Found cast iron monument with a sign and post on the north side and established NAD 1983 (1996 Adjustment) Anoka County Project Coordinates by Static GPS methods. Updated ties.

May 4, 2010 - Found cast iron monument down 0.6'± with a sign and post on the north side and updated ties.

September 16, 2015 - Found cast iron monument down 0.6'± with a sign and post on the north side and updated ties. Verified location of corner by VRS GPS methods.