

CERTIFICATE OF LOCATION OF GOVERNMENT CORNER

County of Anoka

State of Minnesota

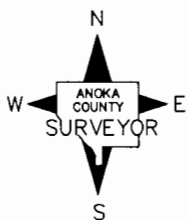
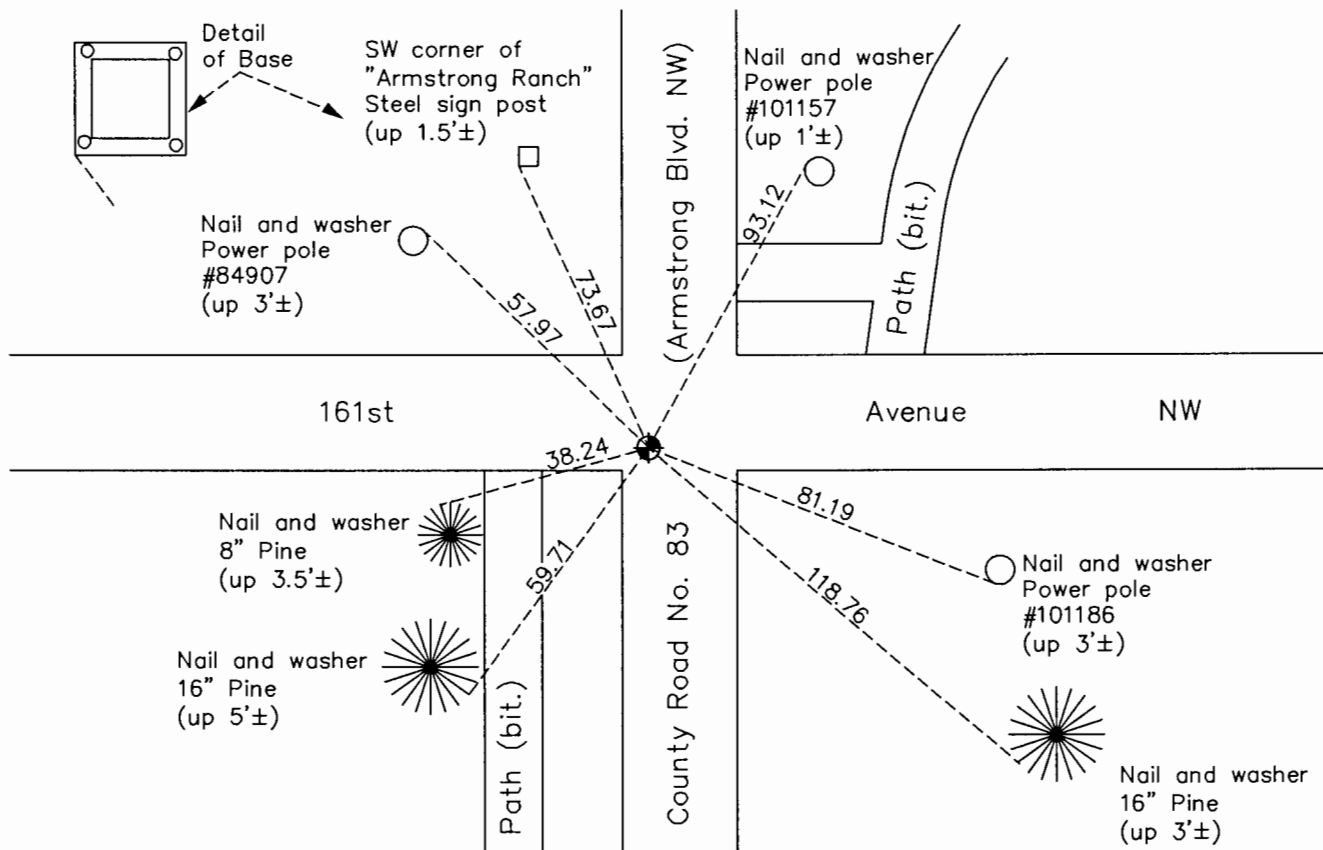
East 1/4 Corner of Sec. 17 Township 32 Range 25

On the 4th day of December, 1967, the described corner was evidenced by area resurvey

and to perpetuate the location of said corner, at the exact location thereof, a permanent marker was placed consisting of a cast iron monument

AND on the 8th day of November, 2016, said permanent marker was replaced with a cast iron monument after road construction and the ties were updated

Updated reference ties are as shown below.



Revision Date
12/07/16

N.A.D. 1983 Coordinates
(1996 Adjustment)

County Project Coordinates	
Northing	183093.5383
Easting	447501.7935
Date	1/03/00

I hereby certify that this United States public land survey monument record is correct and complete to the best of my knowledge and belief.

Larry D. Hoium Date 12/07/16

Larry D. Hoium, Anoka County Surveyor
Minnesota License Number 18165

HISTORY OF GOVERNMENT CORNER

County of Anoka

State of Minnesota

East 1/4 Corner of Sec. 17 Township 32 Range 25

CORNER HISTORY:

December 4, 1967 - Set cast iron monument down 0.5'± using area resurvey and established ties to monument.

June 17, 1969 - Found cast iron monument and updated ties.

July 26, 1972 - Found cast iron monument and updated ties.

June 29, 1976 - Found cast iron monument and updated ties.

June 19, 1979 - Found cast iron monument and updated ties.

August 20, 1982 - Found cast iron monument and updated ties.

June 7, 1988 - Found cast iron monument and updated ties.

June 14, 1988 - Set construction ties prior to road construction.

June 23, 1989 - Set cast iron monument after road construction using construction ties. Updated ties.

August 10, 1993 - Found cast iron monument and updated ties.

December 29, 1993 - Found cast iron monument and updated ties.

January 3, 2000 - Found cast iron monument and established NAD 1983 (1996 Adjustment) Anoka County Project Coordinates by Static GPS methods. Updated ties.

April 29, 2010 - Found cast iron monument flush with the surface and updated ties.

August 13, 2015 - Found cast iron monument flush with the surface and updated ties. Verified location of corner by VRS GPS methods.

Date unknown - Set construction ties and removed cast iron monument prior to road construction. Updated ties and verified location of corner by VRS GPS methods.

November 8, 2016 - Set cast iron monument after road construction using construction ties. Updated ties and verified location of corner by Static GPS methods.