

# CERTIFICATE OF LOCATION OF GOVERNMENT CORNER

County of Anoka

State of Minnesota

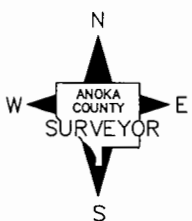
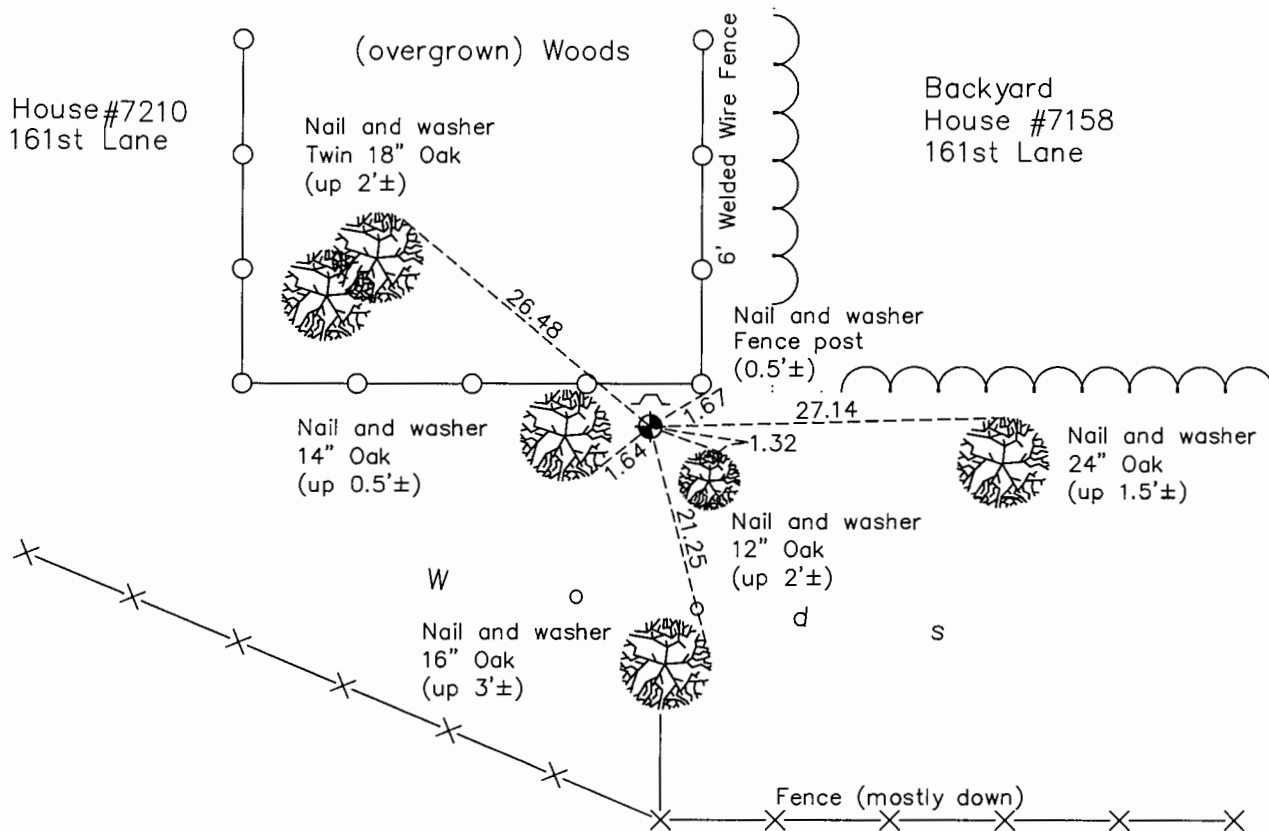
## West 1/4 Corner of Sec. 15 Township 32 Range 25

On the 22nd day of April, 1963, the described corner was evidenced by a 3/4" axle shaft

and to perpetuate the location of said corner, at the exact location thereof, a permanent marker was placed consisting of a cast iron monument with a sign and post on the north side

AND on the 5th day of October, 2015, said permanent marker was found flush and the ties were updated

Updated reference ties are as shown below.



Revision Date  
8/2/16

N.A.D. 1983 Coordinates  
(1996 Adjustment)

County Project Coordinates	
Northing	<u>183028.2382</u>
Easting	<u>452818.7849</u>
Date	<u>4/21/00</u>

I hereby certify that this United States public land survey monument record is correct and complete to the best of my knowledge and belief.

*Larry D. Hoium* Date 8/30/16

Larry D. Hoium, Anoka County Surveyor

Minnesota License Number 18165

# HISTORY OF GOVERNMENT CORNER

Page No. 63

County of Anoka

State of Minnesota

West 1/4 Corner of Sec. 15 Township 32 Range 25

## **CORNER HISTORY:**

April 22, 1963 - Found 3/4" axle shaft up 1'±. Established ties to axle shaft.

August 3, 1964 - Replaced axle shaft with a cast iron monument and updated ties.

June 13, 1969 - Found cast iron monument and updated ties.

August 17, 1972 - Found cast iron monument and updated ties.

June 30, 1976 - Found cast iron monument and updated ties.

June 27, 1979 - Found cast iron monument and updated ties.

August 16, 1982 - Found cast iron monument and updated ties.

July 17, 1985 - Found cast iron monument and updated ties.

December 9, 1986 - Found cast iron monument and updated ties.

July 6, 1988 - Found cast iron monument and updated ties.

August 13, 1993 - Found cast iron monument and updated ties.

April 21, 2000 - Found cast iron monument with a sign and post on the north side and established NAD 1983 (1996 Adjustment) Anoka County Project Coordinates by Static GPS methods. Updated ties.

May 27, 2010 - Found cast iron monument flush with the surface with a sign and post on the north side. Updated ties.

October 5, 2015 - Found cast iron monument flush with the surface with a sign and post on the north side. Updated ties.