

CERTIFICATE OF LOCATION OF GOVERNMENT CORNER

County of Anoka

State of Minnesota

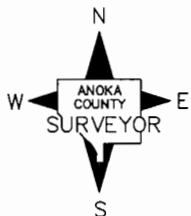
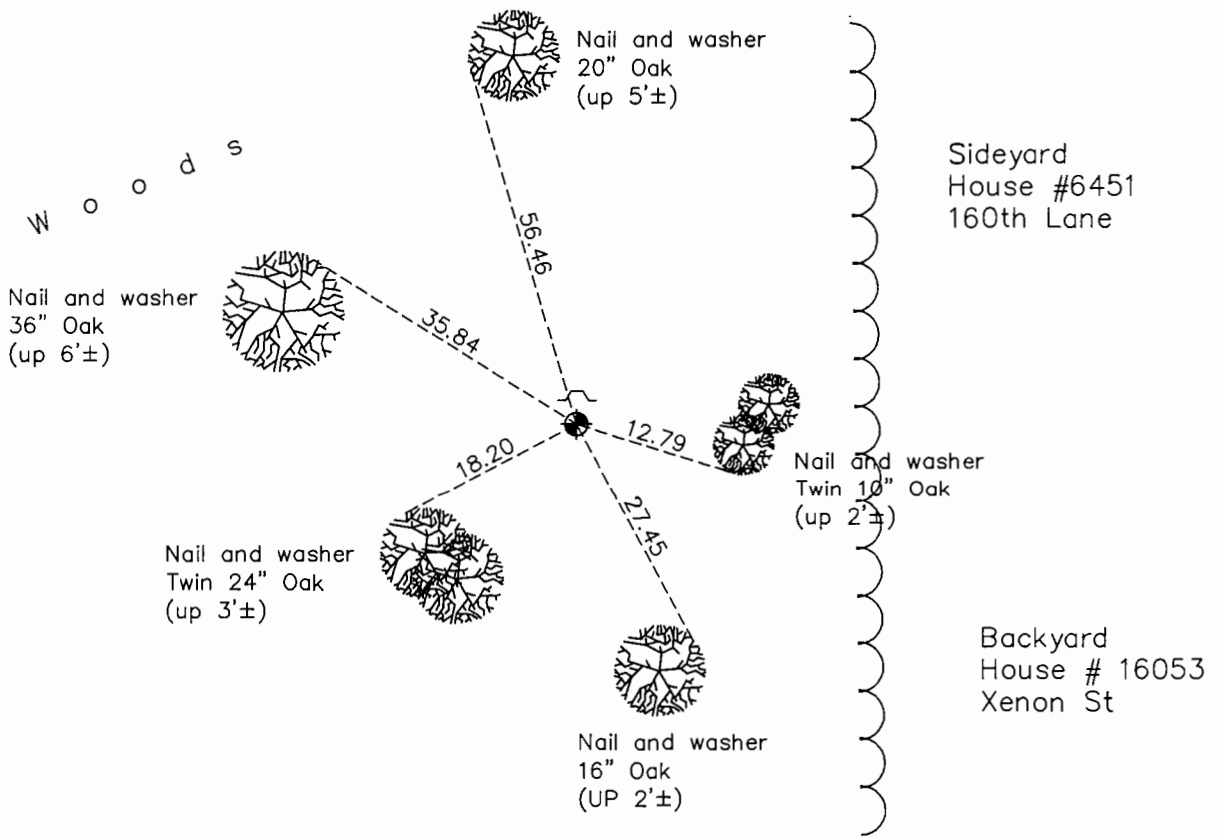
East 1/4 Corner of Sec. 15 Township 32 Range 25

On the 25th day of July, 1961, the described corner was evidenced by area resurvey

and to perpetuate the location of said corner, at the exact location thereof, a permanent marker was placed consisting of a cast iron monument with a sign and post on the north side

AND on the 5th day of October, 2015, said permanent marker was found up 0.2' and the ties were updated

Updated reference ties are as shown below.



Revision Date
8/2/16

N.A.D. 1983 Coordinates
(1996 Adjustment)

County Project Coordinates	
Northing	<u>183022.1744</u>
Easting	<u>458088.8616</u>
Date	<u>4/21/00</u>

I hereby certify that this United States public land survey monument record is correct and complete to the best of my knowledge and belief.

Larry D. Hoium Date 8/25/16

Larry D. Hoium, Anoka County Surveyor

Minnesota License Number 18165

HISTORY OF GOVERNMENT CORNER

Page No. 64

County of Anoka

State of Minnesota

East 1/4 Corner of Sec. 15 Township 32 Range 25

CORNER HISTORY:

July 25, 1961 - Set cast iron monument using a straight line and equal distance between the NE corner and the SE corner of Section 15 and established ties to monument.

August 6, 1964 - Found cast iron monument and updated ties.

June 13, 1969 - Found cast iron monument and updated ties.

August 21, 1972 - Found cast iron monument and updated ties.

June 27, 1979 - Found cast iron monument and updated ties.

August 23, 1982 - Found cast iron monument and updated ties.

July 30, 1985 - Found cast iron monument and updated ties.

July 6, 1988 - Found cast iron monument and updated ties.

August 11, 1993 - Found cast iron monument and updated ties.

April 21, 2000 - Found cast iron monument with a sign and post on the north side and established NAD 1983 (1996 Adjustment) Anoka County Project Coordinates by Static GPS methods. Updated ties.

May 2010 - Found cast iron monument up 0.2'± with a sign and post on the north side and updated ties.

October 5, 2015 - Found cast iron monument up 0.2'± with a sign and post on the north side and updated ties.