

CERTIFICATE OF LOCATION OF GOVERNMENT CORNER

County of Anoka

State of Minnesota

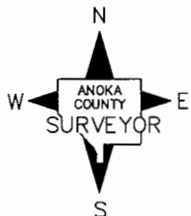
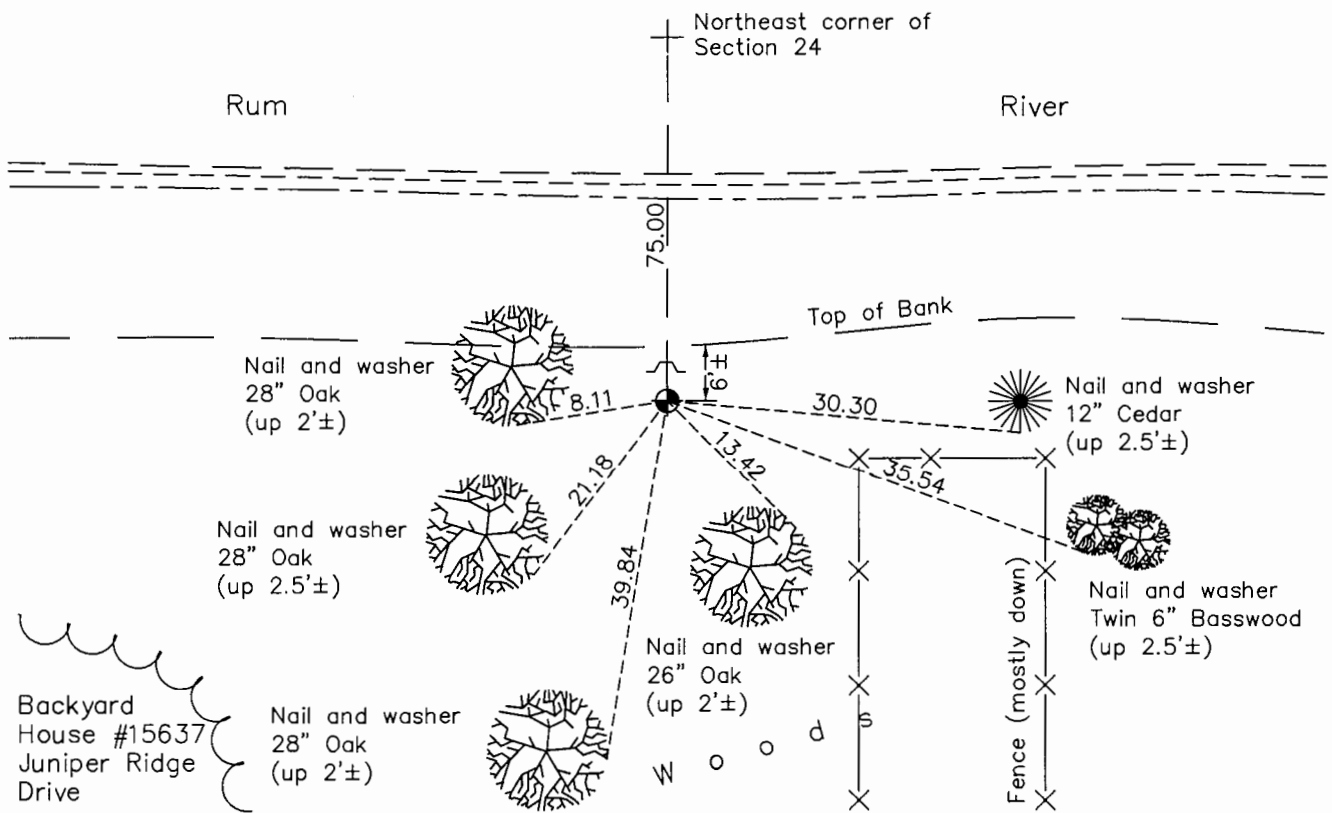
Witness Corner of Sec. 24 Township 32 Range 25
 (On east line of section)

On the 20th day of September, 1963, the described corner was evidenced by area resurvey

and to perpetuate the location of said corner, at the exact location thereof, a permanent marker was placed consisting of a cast iron monument with a sign and post on the north side

AND on the 11th day of October, 2015, said permanent marker was found flush and the ties were updated

Updated reference ties are as shown below.



N.A.D. 1983 Coordinates
(1996 Adjustment)

County Project Coordinates	
Northing	180327.9915
Easting	468603.5981
Date	4/21/00

Revision Date
8/2/16

I hereby certify that this United States public land survey monument record is correct and complete to the best of my knowledge and belief.

Larry D. Hoium Date 8/25/16

Larry D. Hoium, Anoka County Surveyor
Minnesota License Number 18165

HISTORY OF GOVERNMENT CORNER

County of Anoka

State of Minnesota

Witness Corner of Sec. 24 Township 32 Range 25
(On east line of section)

CORNER HISTORY:

September 20, 1963 - Set cast iron monument using area resurvey and established ties to monument.

August 18, 1982 - Found cast iron monument and updated ties.

July 26, 1985 - Found cast iron monument and updated ties.

July 12, 1988 - Found cast iron monument and updated ties.

April 21, 2000 - Found cast iron monument with a sign and post on the north side and established NAD 1983 (1996 Adjustment) Anoka County Project Coordinates by Static GPS methods. Updated ties.

May 24, 2010 - Found cast iron monument flush with the surface and updated ties.

October 14, 2015 - Found cast iron monument flush with the surface with a sign and post on the north side and updated ties.