

# CERTIFICATE OF LOCATION OF GOVERNMENT CORNER

County of Anoka

State of Minnesota

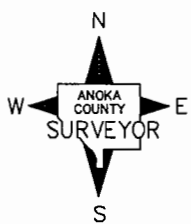
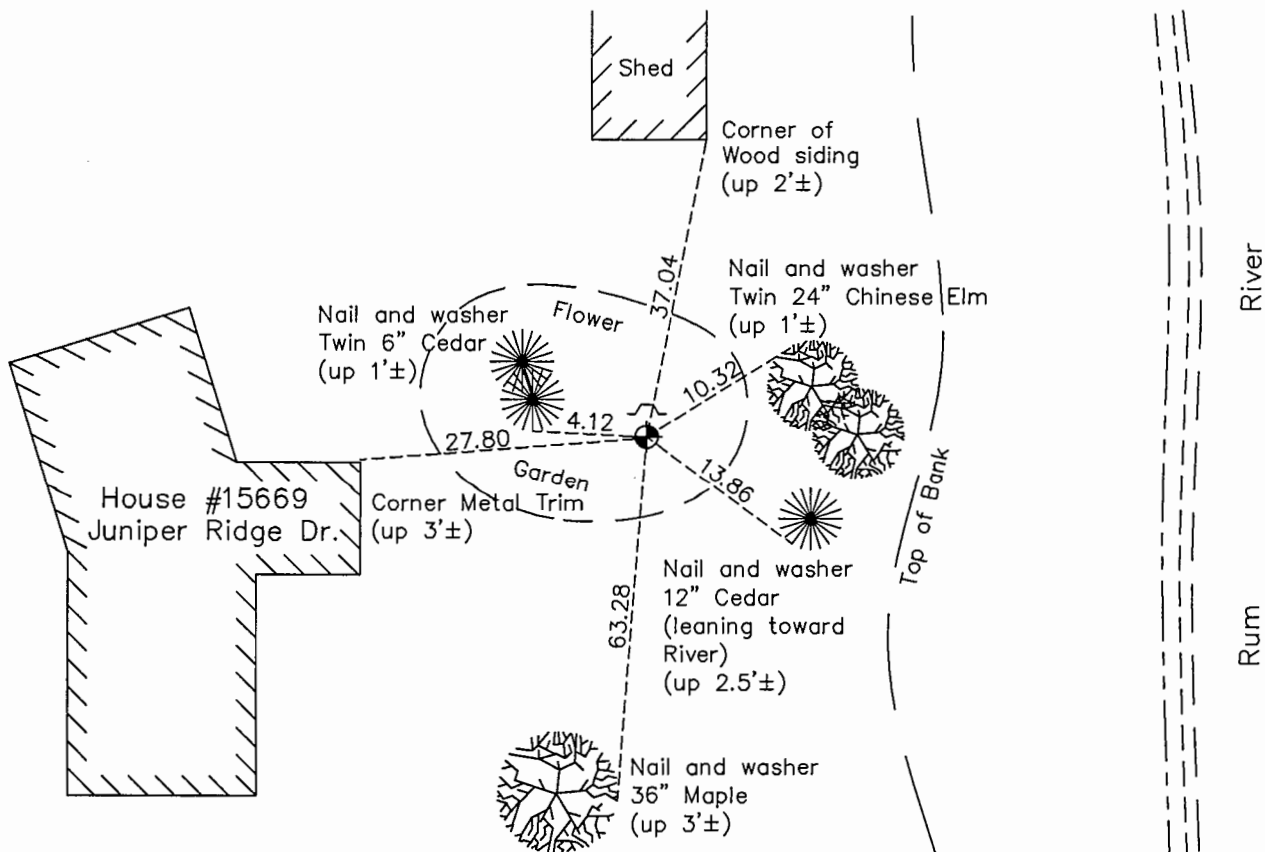
Witness Corner of Sec. 24 Township 32 Range 25  
 (10' west of Meander Corner)

On the 10th day of July, 1963, the described corner was evidenced by area resurvey

and to perpetuate the location of said corner, at the exact location thereof, a permanent marker was placed consisting of a cast iron monument with a sign and post on the north side

AND on the 14th day of October, 2015, said permanent marker was found down 0.5'± and the ties were updated

Updated reference ties are as shown below.



Revision Date  
8/2/16

N.A.D. 1983 Coordinates  
 (1996 Adjustment)

County Project Coordinates	
Northing	<u>180399.5283</u>
Easting	<u>467193.5391</u>
Date	<u>1/08/01</u>

I hereby certify that this United States public land survey monument record is correct and complete to the best of my knowledge and belief.

*Larry D. Hoium* Date 8/25/16

Larry D. Hoium, Anoka County Surveyor

Minnesota License Number 18165

# HISTORY OF GOVERNMENT CORNER

County of Anoka

State of Minnesota

Witness Corner of Sec. 24 Township 32 Range 25  
(10' west of Meander Corner)

**CORNER HISTORY:**

July 10, 1963 - Set cast iron monument 10 feet west of Meander Corner.

August 11, 1964 - Found cast iron monument and updated ties.

June 24, 1969 - Found cast iron monument and updated ties.

August 23, 1972 - Found cast iron monument and updated ties.

June 28, 1976 - Found cast iron monument and updated ties.

June 21, 1979 - Found cast iron monument and updated ties.

August 18, 1982 - Found cast iron monument and updated ties.

August 19, 1988 - Found cast iron monument and updated ties.

August 24, 1993 - Found cast iron monument and updated ties.

January 8, 2001 - Found cast iron monument with a sign and post on the north side and established NAD 1983 (1996 Adjustment) Anoka County Project Coordinates by Static GPS methods. Updated ties.

May 5, 2010 - Found cast iron monument with a sign and post on the north side and updated ties.

October 14, 2015 - Found cast iron monument down 0.5'± with a sign and post on the north side and updated ties.