

CERTIFICATE OF LOCATION OF GOVERNMENT CORNER

County of Anoka

State of Minnesota

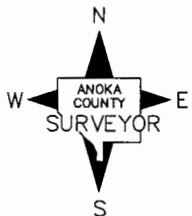
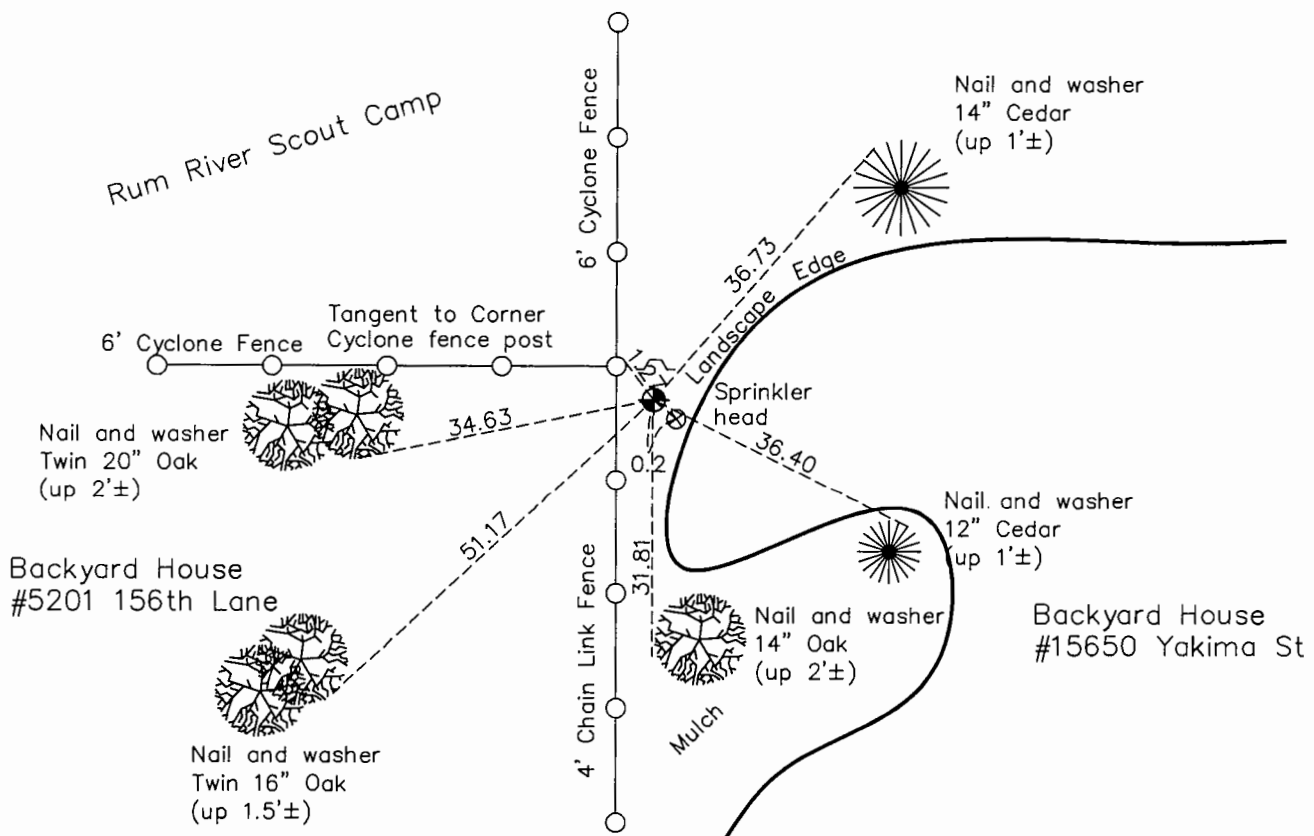
North $\frac{1}{4}$ Corner of Sec. 24 Township 32 Range 25

On the 11th day of August, 1964, the described corner was evidenced by 1/2" solid iron bar

and to perpetuate the location of said corner, at the exact location thereof, a permanent marker was placed consisting of a cast iron monument with a sign and post on the north side

AND on the 14th day of October, 2015, said permanent marker was found down 1'± and the ties were updated

Updated reference ties are as shown below.



Revision Date

8/2/16

N.A.D. 1983 Coordinates
(1996 Adjustment)

County Project Coordinates	
Northing	<u>180396.5963</u>
Easting	<u>465990.9259</u>
Date	<u>1/05/00</u>

I hereby certify that this United States public land survey monument record is correct and complete to the best of my knowledge and belief.

Larry D. Hoium Date 8/25/16

Larry D. Hoium, Anoka County Surveyor

Minnesota License Number 18165

HISTORY OF GOVERNMENT CORNER

County of Anoka

State of Minnesota

North 1/4 Corner of Sec. 24 Township 32 Range 25

CORNER HISTORY:

April 15, 1961 - Cartwright and Olson found a solid iron bar. Established ties to monument.

August 11, 1964 - Found 1/2" X 2' solid iron bar set up 0.5' and updated ties. Iron bar is 1.5' north and 0.5' east of fence corner.

June 24, 1969 - Replaced solid iron bar with a cast iron monument set up 0.1'± and updated ties.

August 23, 1972 - Found cast iron monument and updated ties.

June 28, 1976 - Found cast iron monument and updated ties.

June 21, 1979 - Found cast iron monument and updated ties.

August 19, 1982 - Found cast iron monument and updated ties.

July 26, 1985 - Found cast iron monument and updated ties.

July 11, 1988 - Found cast iron monument and updated ties.

August 10, 1993 - Found cast iron monument and updated ties.

January 5, 2000 - Found cast iron monument and established NAD 1983 (1996 Adjustment) Anoka County Project Coordinates by Static GPS methods.

April 13, 2000 - Found cast iron monument with a sign and post on the north side and updated ties.

June 3, 2010 - Found cast iron monument down 1'± with a sign and post on the north side and updated ties.

October 14, 2015 - Found cast iron monument down 1'± with a sign and post on the north side and updated ties.