

CERTIFICATE OF LOCATION OF GOVERNMENT CORNER

County of Anoka

State of Minnesota

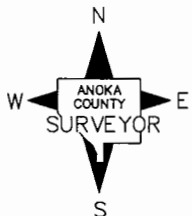
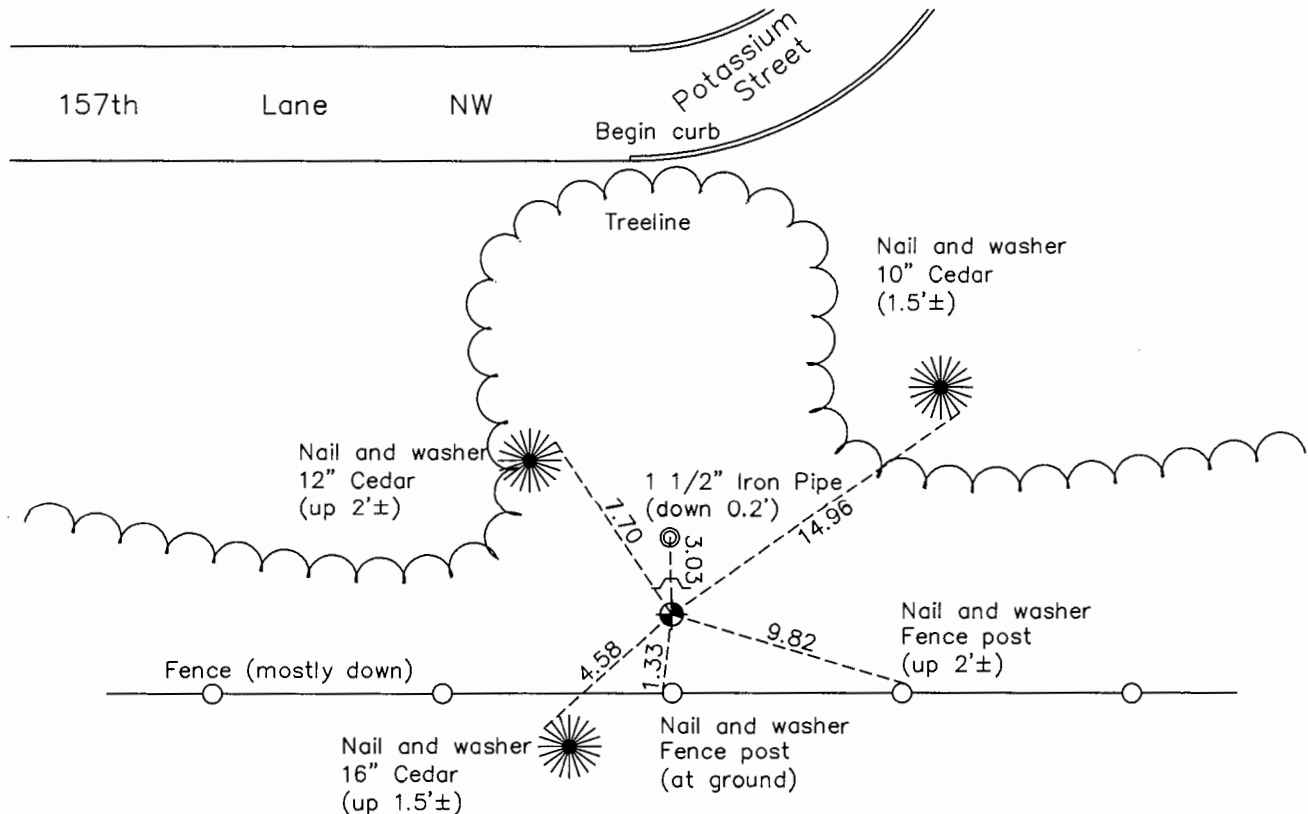
North $\frac{1}{4}$ Corner of Sec. 23 Township 32 Range 25

On the 27th day of July, 1961, the described corner was evidenced by a 1/2" iron pipe

and to perpetuate the location of said corner, at the exact location thereof, a permanent marker was placed consisting of a cast iron monument with a sign and post on the north side

AND on the 15th day of October, 2015, said permanent marker was found flush and the ties were updated

Updated reference ties are as shown below.



Revision Date

8/2/16

N.A.D. 1983 Coordinates
(1996 Adjustment)

County Project Coordinates	
Northing	<u>180386.6679</u>
Easting	<u>460724.8966</u>
Date	<u>12/29/99</u>

I hereby certify that this United States public land survey monument record is correct and complete to the best of my knowledge and belief.

Larry D. Hoium Date 8/25/16

Larry D. Hoium, Anoka County Surveyor
Minnesota License Number 18165

HISTORY OF GOVERNMENT CORNER

Page No. 72

County of Anoka

State of Minnesota

North 1/4 Corner of Sec. 23 Township 32 Range 25

CORNER HISTORY:

July 27, 1961 - Found 1/2" iron pipe north of east-west fence. Replaced it with a cast iron monument up 0.1'± and established ties to monument.

August 6, 1964 - Found cast iron monument and updated ties.

July 31, 1969 - Found cast iron monument and updated ties.

August 15, 1972 - Found cast iron monument and updated ties.

July 1, 1976 - Found cast iron monument and updated ties.

June 21, 1979 - Found cast iron monument and updated ties.

August 19, 1982 - Found cast iron monument and updated ties.

July 29, 1985 - Found cast iron monument and updated ties.

July 11, 1988 - Found cast iron monument and updated ties.

August 16, 1993 - Found cast iron monument and updated ties.

December 29, 1999 - Found cast iron monument with a sign and post on the north side and established NAD 1983 (1996 Adjustment) Anoka County Project Coordinates by Static GPS methods. Updated ties.

April 19, 2010 - Found cast iron monument flush with the surface with a sign and post on the north side and updated ties.

October 15, 2015 - Found cast iron monument flush with the surface with a sign and post on the north side and updated ties.