

CERTIFICATE OF LOCATION OF GOVERNMENT CORNER

County of Anoka

State of Minnesota

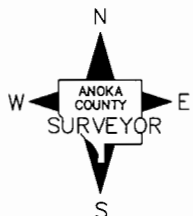
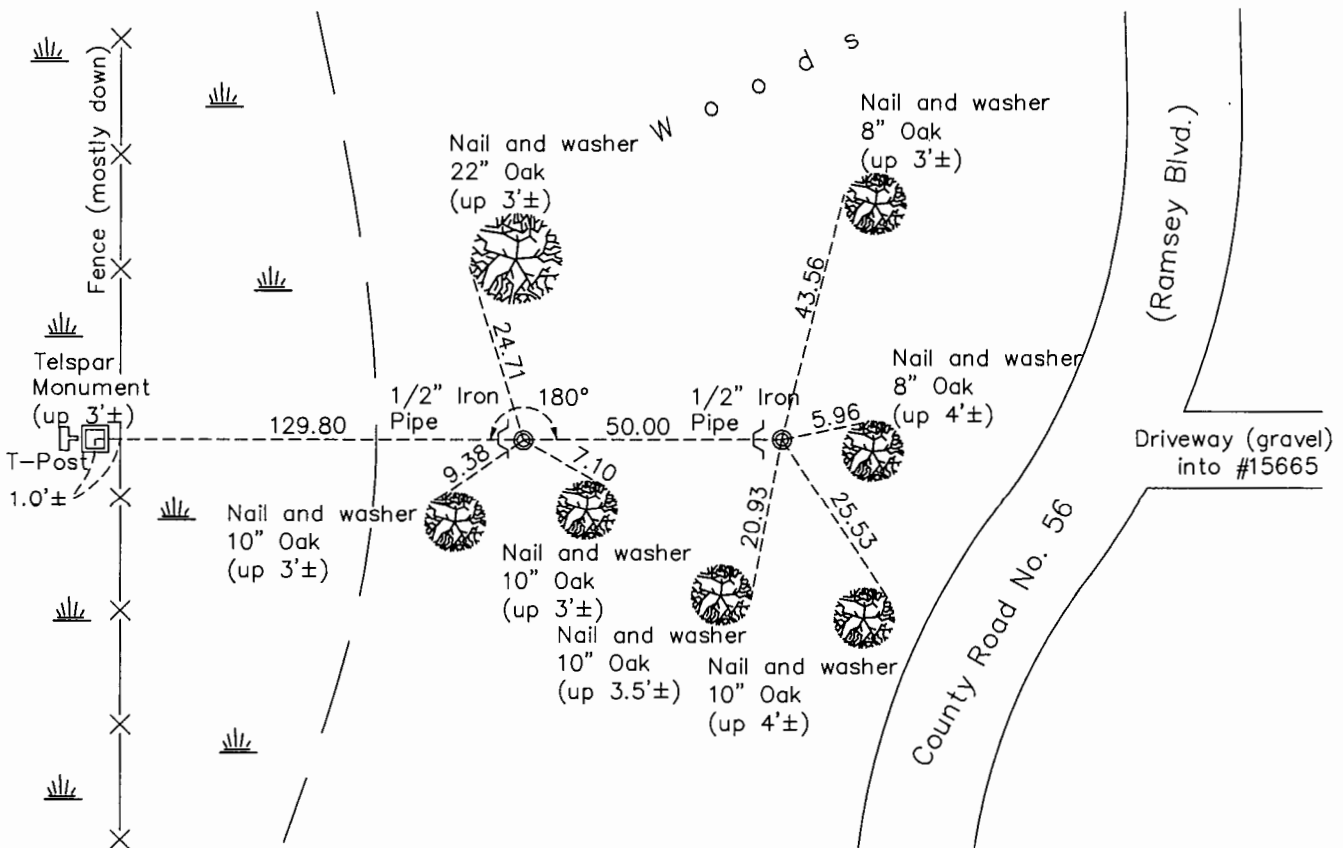
Southwest Corner of Sec. 15 Township 32 Range 25

On the 16th day of August, 1961, the described corner was evidenced by area resurvey

and to perpetuate the location of said corner, at the exact location thereof, a permanent marker was placed consisting of a red and white Iron Pipe

AND on the 5th day of October, 2015, said permanent marker was found to be a red and white 2" sq steel telespar monument up 3'± w/ a sign attached facing east and ties were updated

Updated reference ties are as shown below.



Revision Date
8/8/16

N.A.D. 1983 Coordinates
(1996 Adjustment)

County Project Coordinates	
Northing	<u>180392.5802</u>
Easting	<u>452778.2438</u>
Date	<u>4/18/00</u>

I hereby certify that this United States public land survey monument record is correct and complete to the best of my knowledge and belief.

Larry D. Hoium Date 8/25/16

Larry D. Hoium, Anoka County Surveyor
Minnesota License Number 18165

HISTORY OF GOVERNMENT CORNER

Page No. 75

County of Anoka

State of Minnesota

Southwest Corner of Sec. 15 Township 32 Range 25

CORNER HISTORY:

August 16, 1961 - Set cast iron monument and established ties to monument. See ties for positioning of corner.

August 4, 1964 - Found cast iron monument and updated ties.

June 13, 1969 - Found cast iron monument and updated ties.

July 26, 1972 - Found cast iron monument and updated ties.

July 1, 1976 - Found cast iron monument and updated ties.

July 2, 1979 - Found cast iron monument and updated ties.

August 18, 1982 - Found cast iron monument and updated ties.

May 12, 1987 - Replaced cast iron monument due to instability with a red and white iron pipe. Updated ties.

August 13, 1993 - Found red and white iron pipe and updated ties.

April 18, 2000 - Found red and white iron pipe and established NAD 1983 (1996 Adjustment) Anoka County Project Coordinates by Static GPS methods. Updated ties.

April 2010 - Found red and white iron pipe and updated ties.

October 5, 2015 - Found red and white 2" square steel Telespar monument up 3'± with a sign attached facing east and updated ties. Verified location of corner by VRS GPS methods.