

CERTIFICATE OF LOCATION OF GOVERNMENT CORNER

County of Anoka

State of Minnesota

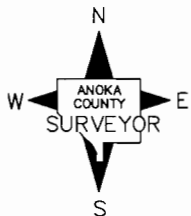
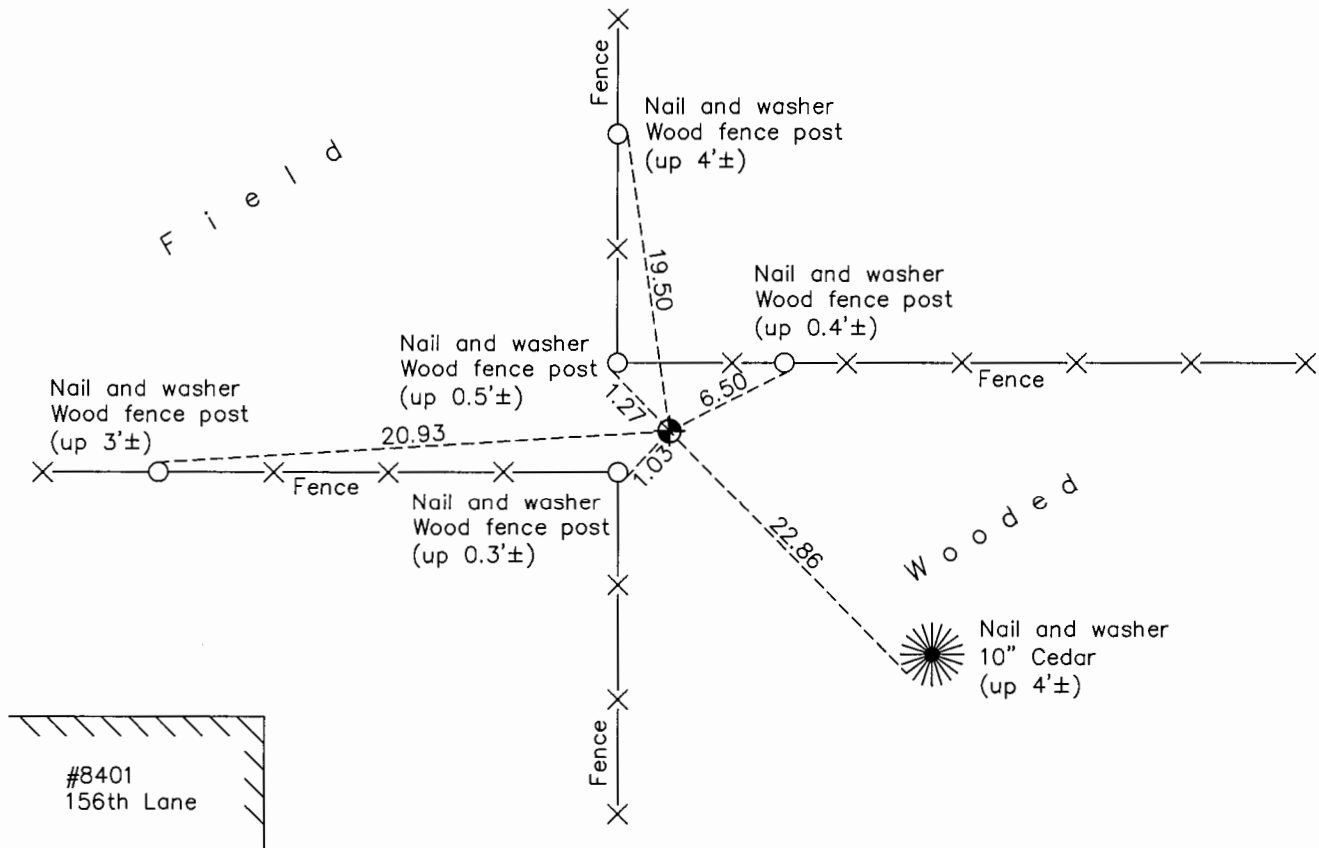
North $\frac{1}{4}$ Corner of Sec. 20 Township 32 Range 25

On the 20th day of October, 1976, the described corner was evidenced by an iron pipe

and to perpetuate the location of said corner, at the exact location thereof, a permanent marker was placed consisting of a cast iron monument

AND on the 10th day of September, 2015, said permanent marker was found down 0.5' and the ties were updated

Updated reference ties are as shown below.



Revision Date
8/8/16

N.A.D. 1983 Coordinates
(1996 Adjustment)

County Project Coordinates	
Northing	<u>180476.5626</u>
Easting	<u>444850.6465</u>
Date	<u>4/24/00</u>

I hereby certify that this United States public land survey monument record is correct and complete to the best of my knowledge and belief.

Larry D. Hoium Date 8/25/16

Larry D. Hoium, Anoka County Surveyor
Minnesota License Number 18165

HISTORY OF GOVERNMENT CORNER

County of Anoka

State of Minnesota

North 1/4 Corner of Sec. 20 Township 32 Range 25

CORNER HISTORY:

February 6, 1968 - Found 1/2" iron pipe on north edge of corner fence post. Iron pipe was used for area resurvey. Established ties to monument.

August 18, 1972 - Found 1/2" iron pipe and updated ties.

July 1, 1976 - Found 1/2" iron pipe and updated ties.

October 20, 1976 - Replaced 1/2" iron pipe with a cast iron monument set down 0.4'±. Updated ties.

June 21, 1979 - Found cast iron monument and updated ties.

August 16, 1982 - Found cast iron monument and updated ties.

August 1, 1985 - Found cast iron monument and updated ties.

June 28, 1988 - Found cast iron monument and updated ties.

August 12, 1993 - Found cast iron monument and updated ties.

April 24, 2000 - Found cast iron monument and established NAD 1983 (1996 Adjustment) Anoka County Project Coordinates by Static GPS methods. Updated ties.

April 2010 - Found cast iron monument down 0.5'± and updated ties.

September 10, 2015 - Found cast iron monument down 0.5'± and updated ties.