

CERTIFICATE OF LOCATION OF GOVERNMENT CORNER

County of Anoka

State of Minnesota

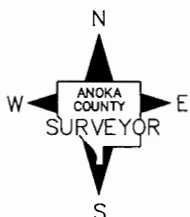
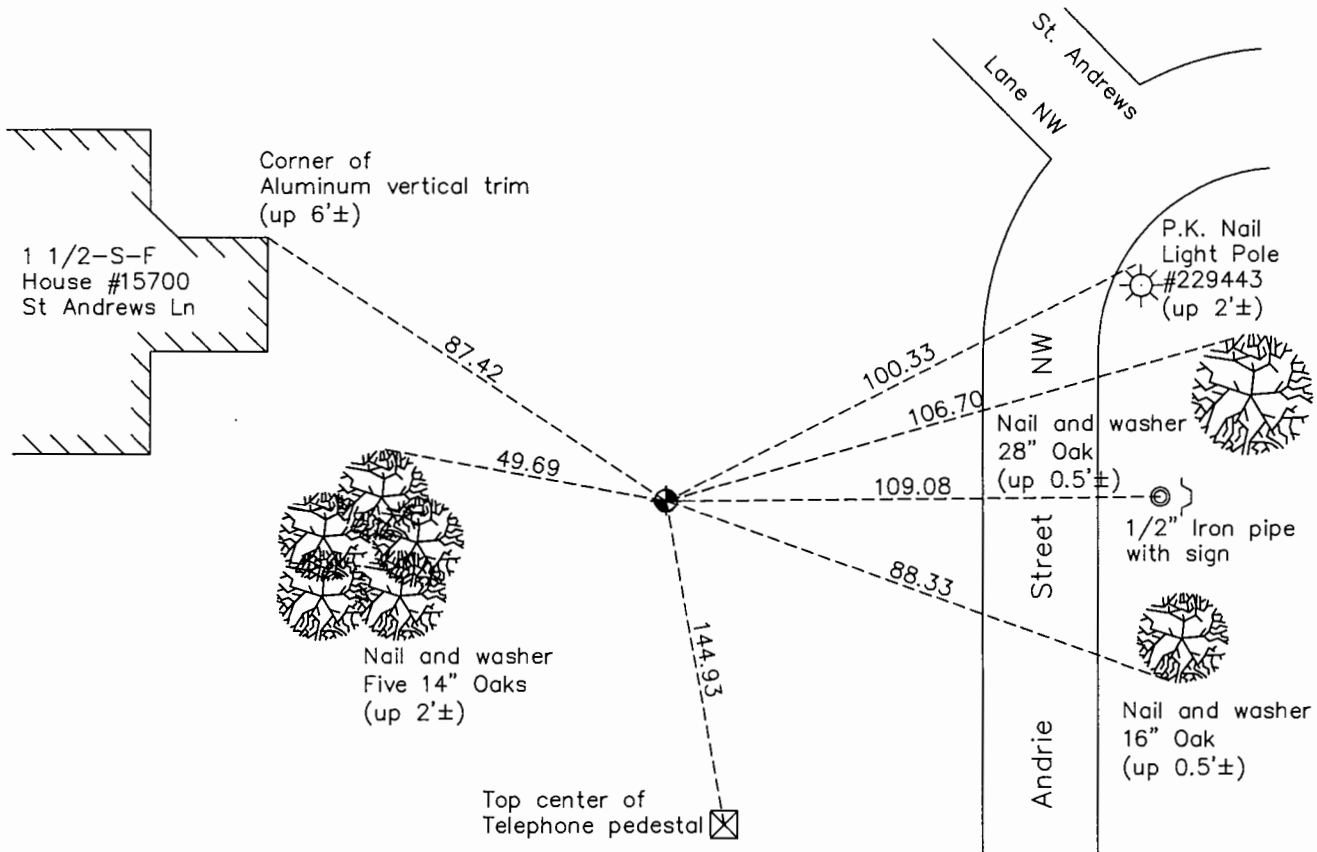
South 1/4 Corner of Sec. 18 Township 32 Range 25

On the 1st day of October, 1963, the described corner was evidenced by a concrete monument

and to perpetuate the location of said corner, at the exact location thereof, a permanent marker was placed consisting of a cast iron monument

AND on the 16th day of September, 2015, said permanent marker was found down 1.0' and the ties were updated

Updated reference ties are as shown below.



Revision Date
8/10/16

N.A.D. 1983 Coordinates
(1996 Adjustment)

County Project Coordinates	
Northing	180541.8162
Easting	439471.4944
Date	4/25/00

I hereby certify that this United States public land survey monument record is correct and complete to the best of my knowledge and belief.

Larry D. Hoium Date 8/25/16

Larry D. Hoium, Anoka County Surveyor

Minnesota License Number 18165

HISTORY OF GOVERNMENT CORNER

County of Anoka

State of Minnesota

South 1/4 Corner of Sec. 18 Township 32 Range 25

CORNER HISTORY:

November 4, 1943 - Cartwright found concrete monument and established ties to monument.

October 1, 1963 - Found 4" square concrete monument up 0.2'± and updated ties.

August 11, 1964 - Found concrete monument and updated ties.

June 16, 1969 - Found concrete monument and updated ties.

August 1, 1972 - Found concrete monument and updated ties.

July 1, 1976 - Found concrete monument and updated ties.

June 28, 1979 - Found concrete monument and updated ties.

August 12, 1982 - Found concrete monument and updated ties.

September 5, 1985 - Set construction ties prior to road construction.

July 16, 1986 - Set cast iron monument with a sign and post on the west side after road construction using construction ties.

June 10, 1988 - Found cast iron monument with a sign and post on the west side and updated ties.

August 11, 1993 - Found cast iron monument with a sign and post on the west side and updated ties.

May 8, 1996 - Found cast iron monument with a sign and post on the west side and updated ties.

April 25, 2000 - Found cast iron monument with a sign and post on the west side and established NAD 1983 (1996 Adjustment) Anoka County Project Coordinates by Static GPS methods. Updated ties.

May 3, 2010 - Found cast iron monument down 1.0'± with sign and post missing and updated ties.

September 16, 2015 - Found cast iron monument down 1.0'± and updated ties. Verified location of corner by VRS GPS methods.