

CERTIFICATE OF LOCATION OF GOVERNMENT CORNER

County of Anoka

State of Minnesota

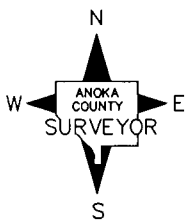
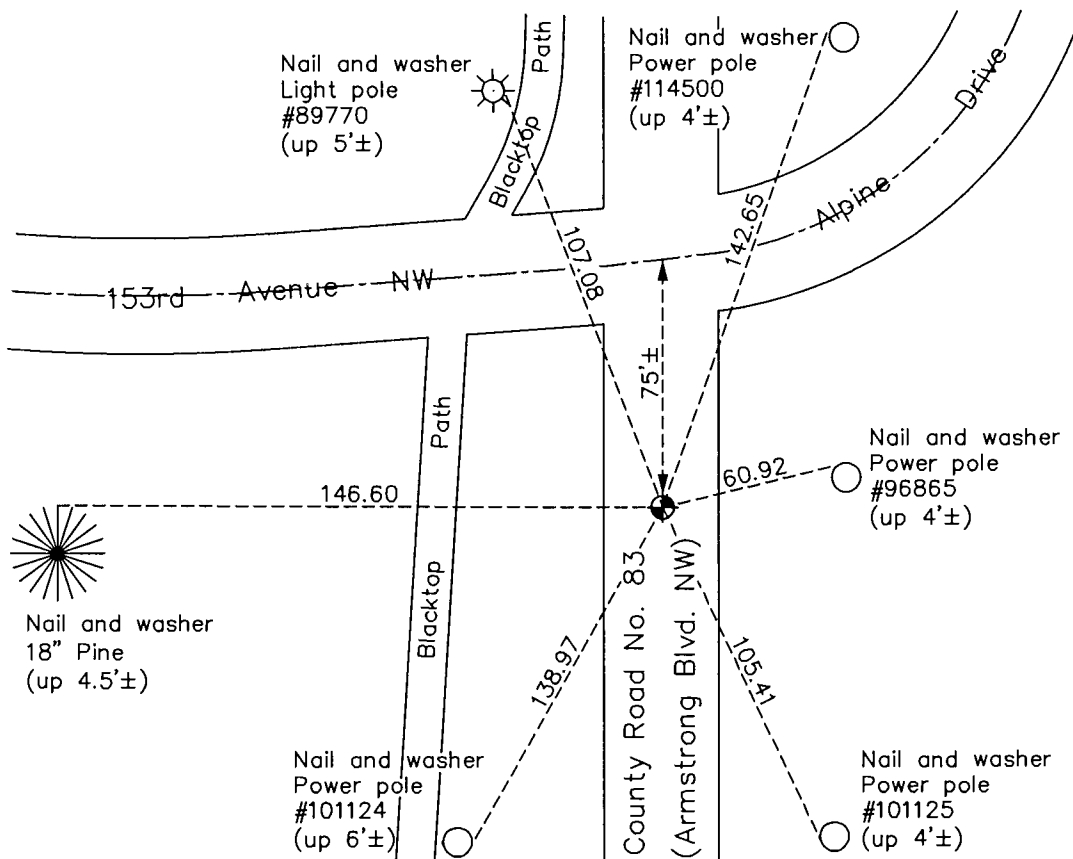
East 1/4 Corner of Sec. 20 Township 32 Range 25

On the 18th day of April, 1961, the described corner was evidenced by a 1/2" iron pipe

and to perpetuate the location of said corner, at the exact location thereof, a permanent marker was placed consisting of a cast iron monument

AND on the 15th day of November, 2016, said permanent marker was replaced with a cast iron monument after road construction and the ties were updated

Updated reference ties are as shown below.



Revision Date
12/22/16

N.A.D. 1983 Coordinates
(1996 Adjustment)

County Project Coordinates	
Northing	<u>177795.1759</u>
Easting	<u>447519.7864</u>
Date	<u>2/01/00</u>

I hereby certify that this United States public land survey monument record is correct and complete to the best of my knowledge and belief.

Larry D. Hoium Date 12/22/16

Larry D. Hoium, Anoka County Surveyor
Minnesota License Number 18165

HISTORY OF GOVERNMENT CORNER

County of Anoka

State of Minnesota

East 1/4 Corner of Sec. 20 Township 32 Range 25

CORNER HISTORY:

April 18, 1961 - Found 1/2" iron pipe bent under blacktop with 3 old ties remaining. Replaced it with a new iron pipe set down 0.3'±. Established ties to monument.

August 5, 1964 - Found iron pipe down 0.1'± and updated ties.

July 29, 1969 - Replaced iron pipe with a cast iron monument set flush with the surface. Updated ties and set P.K. nails 2.00' north and east of monument.

July 27, 1972 - Found cast iron monument and updated ties.

July 1, 1976 - Found cast iron monument and updated ties.

June 25, 1979 - Found cast iron monument and updated ties.

August 19, 1982 - Found cast iron monument and updated ties.

July 19, 1985 - Found cast iron monument and updated ties.

June 7, 1988 - Found cast iron monument and updated ties.

June 13, 1988 - Set construction ties prior to road construction.

June 22, 1989 - Set cast iron monument after road construction using construction ties.

August 9, 1993 - Found cast iron monument and updated ties.

February 1, 2000 - Found cast iron monument and established NAD 1983 (1996 Adjustment) Anoka County Project Coordinates by Static GPS methods. Updated ties.

April 30, 2010 - Found cast iron monument flush with the surface and updated ties.

October 22, 2015 - Found cast iron monument flush with the surface on centerline and updated ties. Verified location of corner by VRS GPS methods.

June 29, 2016 - Set construction ties and removed cast iron monument prior to road construction. Verified location of corner by VRS GPS methods.

November 15, 2016 - Set cast iron monument after road construction using construction ties. Verified location of corner by Static GPS methods.