

CERTIFICATE OF LOCATION OF GOVERNMENT CORNER

County of Anoka

State of Minnesota

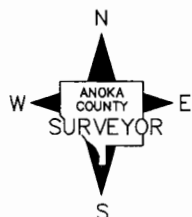
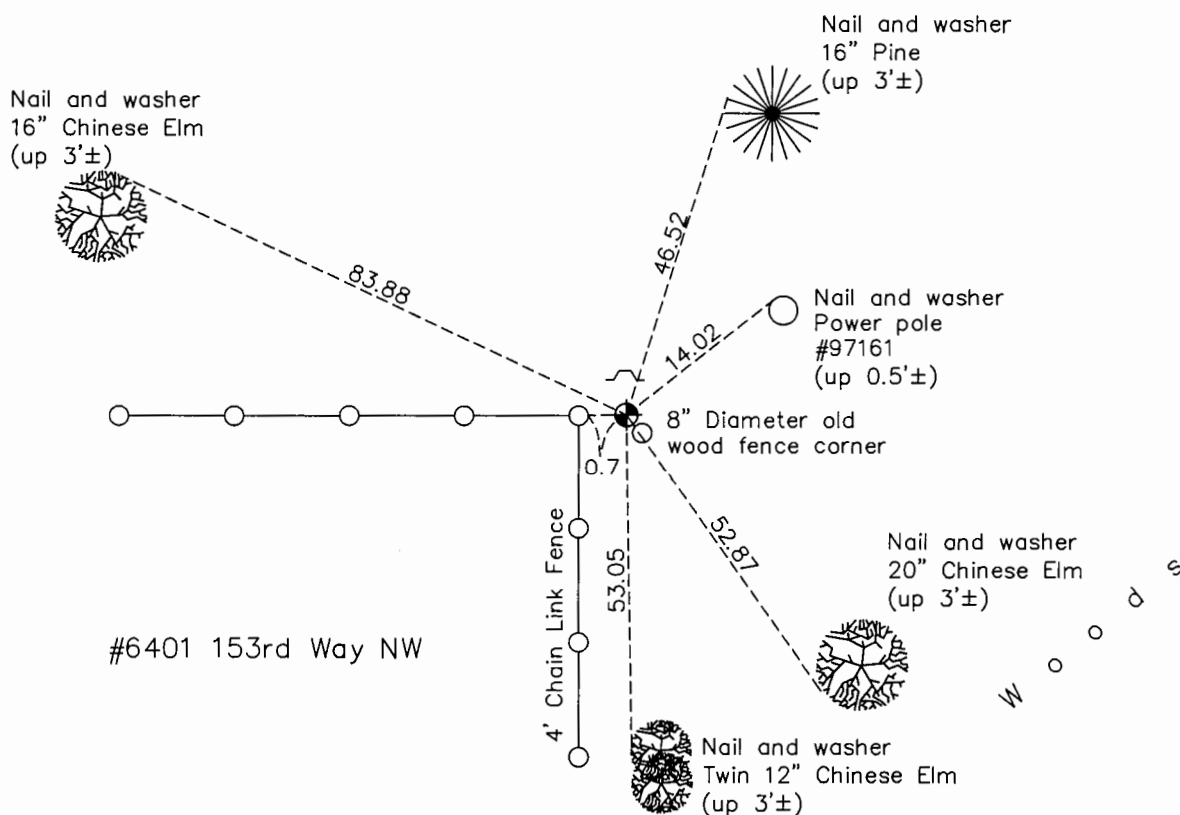
West 1/4 Corner of Sec. 23 Township 32 Range 25

On the 5th day of January, 1961, the described corner was evidenced by a 2" iron pipe

and to perpetuate the location of said corner, at the exact location thereof, a permanent marker was placed consisting of a cast iron monument with a sign and post on the north side

AND on the 26th day of October, 2015, said permanent marker was found down 0.5'± and the ties were updated

Updated reference ties are as shown below.



Revision Date

8/11/16

N.A.D. 1983 Coordinates
(1996 Adjustment)

County Project Coordinates	
Northing	<u>177736.1276</u>
Easting	<u>458087.5234</u>
Date	<u>5/05/00</u>

I hereby certify that this United States public land survey monument record is correct and complete to the best of my knowledge and belief.

Larry D. Hoium Date 8/25/16

Larry D. Hoium, Anoka County Surveyor

Minnesota License Number 18165

HISTORY OF GOVERNMENT CORNER

County of Anoka

State of Minnesota

West 1/4 Corner of Sec. 23 Township 32 Range 25

CORNER HISTORY:

January 5, 1961 - Found 2" iron pipe at fence corner. Established ties to iron pipe.

August 6, 1964 - Found 2" iron pipe and updated ties.

June 19, 1969 - Found 2" iron pipe with top damaged and flush with the surface. Updated ties.

July 28, 1972 - Found 2" iron pipe and updated ties.

July 6, 1976 - Found 2" iron pipe and updated ties.

June 25, 1979 - Found 2" iron pipe and updated ties.

August 18, 1982 - Found 2" iron pipe and updated ties.

July 29, 1985 - Found cast iron monument, date set unknown, and updated ties.

June 17, 1988 - Found cast iron monument and updated ties.

August 16, 1993 - Found cast iron monument and updated ties.

May 5, 2000 - Found cast iron monument and established NAD 1983 (1996 Adjustment) Anoka County Project Coordinates by Static GPS methods. Updated ties.

April 5, 2010 - Found cast iron monument down 0.2'± with a sign and post on the north side and updated ties.

October 26, 2015 - Found cast iron monument down 0.5'± with a sign and post on the north side and updated ties.