

CERTIFICATE OF LOCATION OF GOVERNMENT CORNER

County of Anoka

State of Minnesota

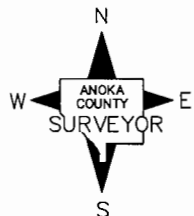
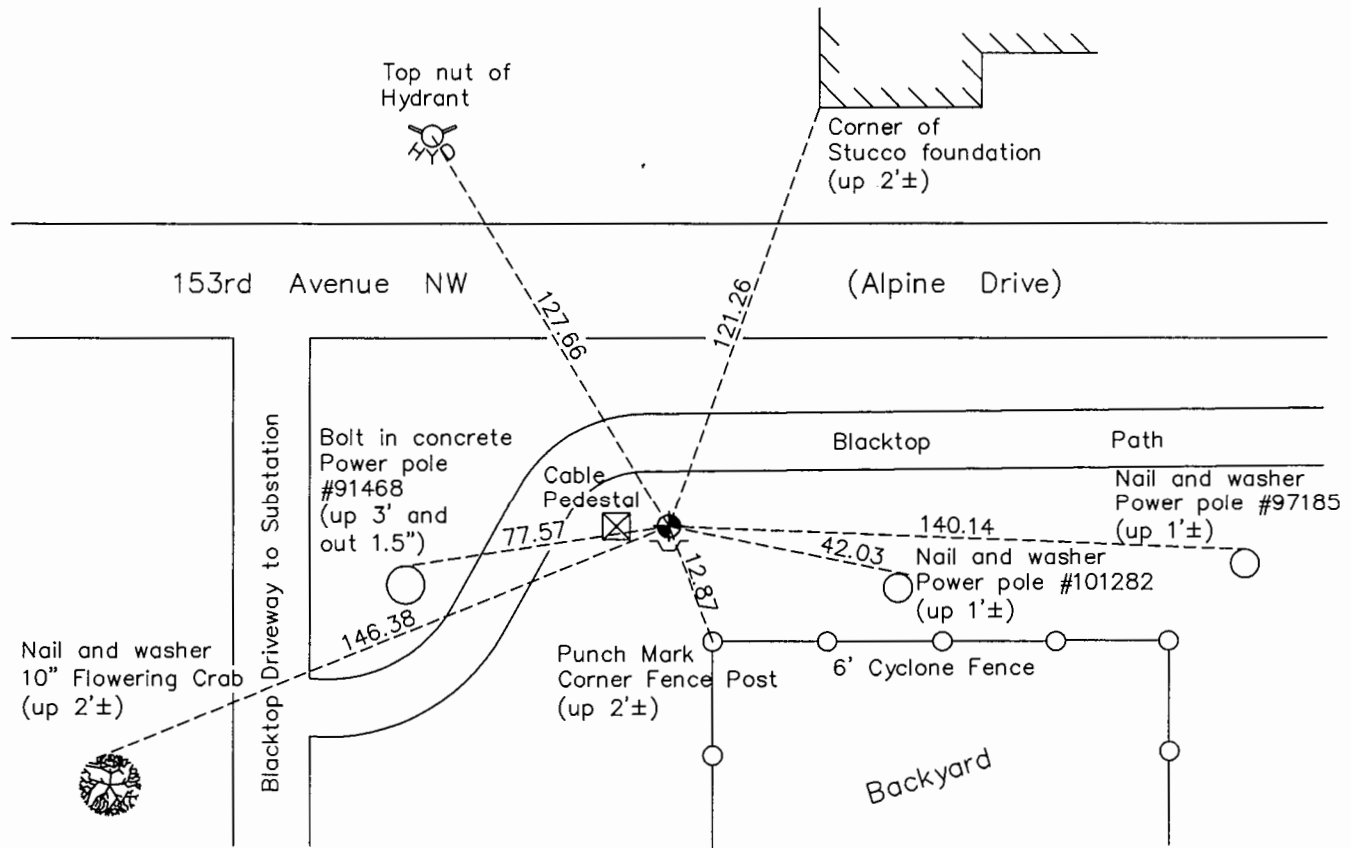
East 1/4 Corner of Sec. 23 Township 32 Range 25

On the 28th day of August, 1959, the described corner was evidenced by a granite monument

and to perpetuate the location of said corner, at the exact location thereof, a permanent marker was placed consisting of a cast iron monument with a sign and post on the south side

AND on the 21st day of September, 2015, said permanent marker was found down 0.5'± and the ties were updated

Updated reference ties are as shown below.



Revision Date
8/11/16

N.A.D. 1983 Coordinates
(1996 Adjustment)

County Project Coordinates	
Northing	<u>177753.1038</u>
Easting	<u>463356.4659</u>
Date	<u>8/30/99</u>

I hereby certify that this United States public land survey monument record is correct and complete to the best of my knowledge and belief.

Larry D. Hoium Date 8/30/16

Larry D. Hoium, Anoka County Surveyor
Minnesota License Number 18165

HISTORY OF GOVERNMENT CORNER

County of Anoka

State of Minnesota

East 1/4 Corner of Sec. 23 Township 32 Range 25

CORNER HISTORY:

August 28, 1959 - Found granite monument up 1.0'±. Established ties to monument.

August 11, 1964 - Found granite monument and updated ties.

June 19, 1969 - Found granite monument up 0.5'± and updated ties.

August 8, 1972 - Found granite monument and updated ties.

November 14, 1975 - Set construction ties prior to road construction.

July 6, 1976 - Found granite monument and updated ties.

November 10, 1977 - Found cast iron monument set in place of granite monument, date unknown, and updated ties. Found sign and post on the south side.

January 30, 1978 - Found cast iron monument with sign and post on the south side and updated ties.

June 25, 1979 - Found cast iron monument and updated ties.

August 19, 1982 - Found cast iron monument and updated ties.

July 28, 1985 - Found cast iron monument and updated ties.

June 6, 1988 - Found cast iron monument and updated ties.

August 11, 1993 - Found cast iron monument and updated ties.

August 30, 1999 - Found cast iron monument with a sign and post on the south side and established NAD 1983 (1996 Adjustment) Anoka County Project Coordinates by Static GPS methods. Updated ties.

April 7, 2010 - Found cast iron monument and updated ties.

September 21, 2015 - Found cast iron monument down 0.5'± with a sign and post on the south side and updated ties.