

CERTIFICATE OF LOCATION OF GOVERNMENT CORNER

County of Anoka

State of Minnesota

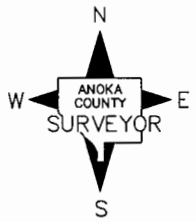
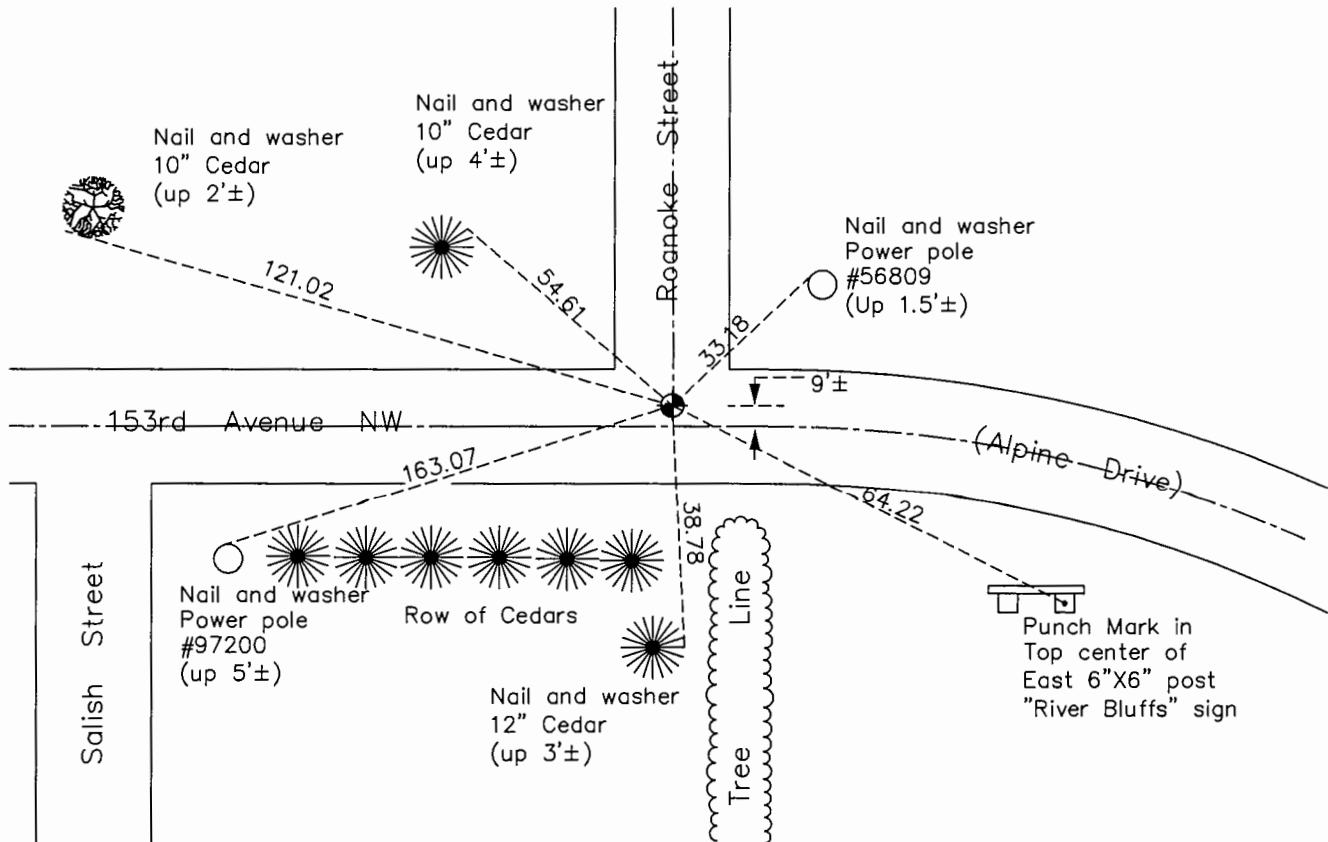
East 1/4 Corner of Sec. 24 Township 32 Range 25

On the 31st day of August, 1959, the described corner was evidenced by a granite monument

and to perpetuate the location of said corner, at the exact location thereof, a permanent marker was placed consisting of a cast iron monument

AND on the 21st day of September, 2015, said permanent marker was found down 0.2'± and the ties were updated

Updated reference ties are as shown below.



N.A.D. 1983 Coordinates
(1996 Adjustment)

County Project Coordinates	
Northing	177759.2200
Easting	468604.8501
Date	4/04/00

Revision Date
8/11/16

I hereby certify that this United States public land survey monument record is correct and complete to the best of my knowledge and belief.

Larry D. Hoium Date 8/30/16

Larry D. Hoium, Anoka County Surveyor

Minnesota License Number 18165

HISTORY OF GOVERNMENT CORNER

Page No. 92

County of Anoka

State of Minnesota

East 1/4 Corner of Sec. 24 Township 32 Range 25

CORNER HISTORY:

August 31, 1959 - Found monument, no indication of type, and established ties to monument.

August 11, 1964 - Found granite monument with top broken off and flush with the surface. Updated ties.

June 24, 1969 - Found granite monument with a 3/4" iron pipe on the north side and updated ties.

August 8, 1972 - Replaced granite monument and 3/4" iron pipe with a cast iron monument. Updated ties.

July 6, 1976 - Found cast iron monument and updated ties.

July 22, 1976 - Found cast iron monument and updated ties.

June 26, 1979 - Found cast iron monument and updated ties.

August 19, 1982 - Found cast iron monument and updated ties.

April 14, 1987 - Updated ties and removed cast iron monument prior to road construction.

January 20, 1988 - Set P.K. nail after road construction using ties.

August 1, 1993 - Found cast iron monument, date reset unknown, and updated ties.

April 4, 2000 - Found cast iron monument and established NAD 1983 (1996 Adjustment) Anoka County Project Coordinates by Static GPS methods. Updated ties.

April 7, 2010 - Found cast iron monument flush with the surface and updated ties.

September 21, 2015 - Found cast iron monument down 0.2'± and updated ties.