

# CERTIFICATE OF LOCATION OF GOVERNMENT CORNER

County of Anoka

State of Minnesota

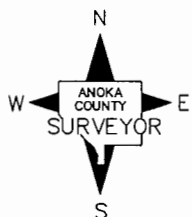
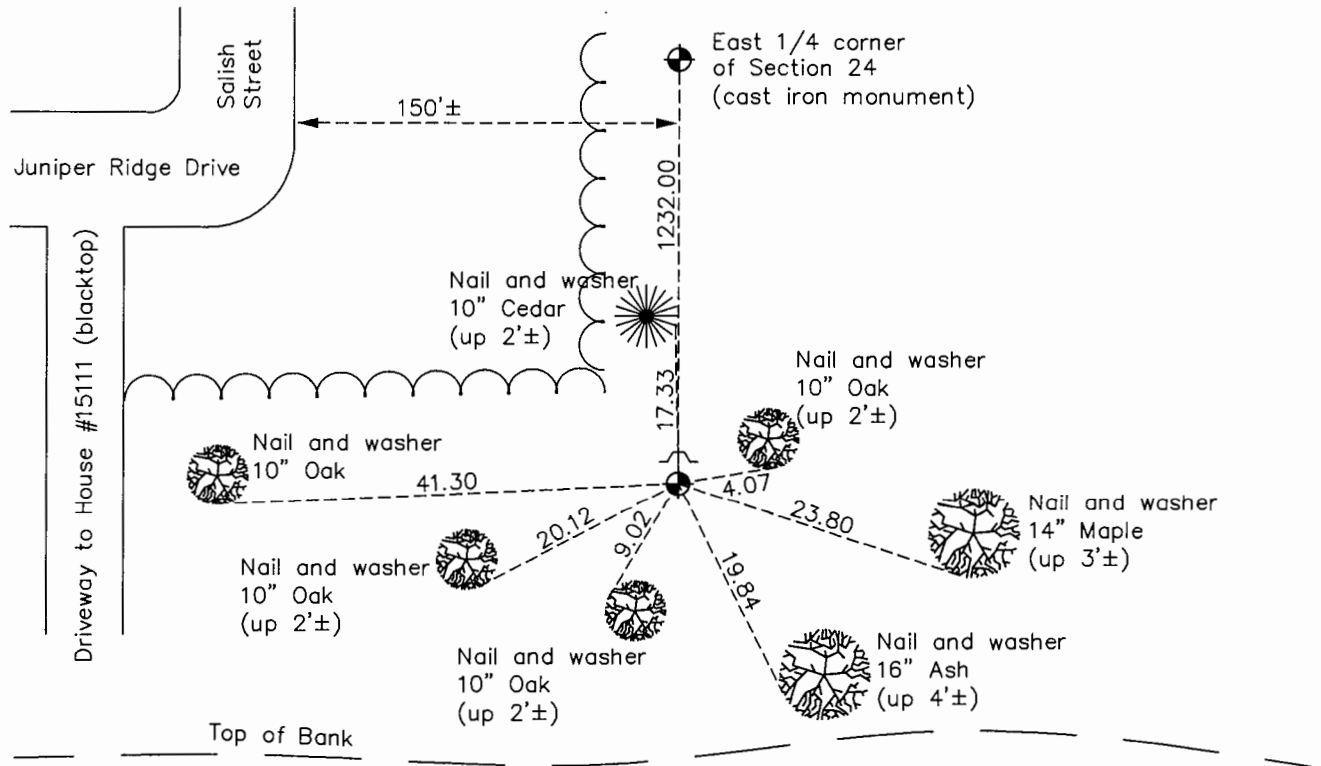
**Witness** Corner of Sec. 24 Township 32 Range 25  
 (On east line of SE 1/4)

On the 23rd day of August, 1963, the described corner was evidenced by area resurvey

and to perpetuate the location of said corner, at the exact location thereof, a permanent marker was placed consisting of a cast iron monument with a sign and post on the north side

AND on the 15th day of October, 2015, said permanent marker was found flush and the ties were updated

Updated reference ties are as shown below.



Revision Date  
8/24/16

N.A.D. 1983 Coordinates  
 (1996 Adjustment)

County Project Coordinates	
Northing	<u>176527.2203</u>
Easting	<u>468598.6714</u>
Date	<u>5/15/00</u>

I hereby certify that this United States public land survey monument record is correct and complete to the best of my knowledge and belief.

*Larry D. Hoium* Date 8/25/16

Larry D. Hoium, Anoka County Surveyor  
 Minnesota License Number 18165

# HISTORY OF GOVERNMENT CORNER

Page No. 93

County of Anoka

State of Minnesota

Witness Corner of Sec. 24 Township 32 Range 25  
(On east line of SE 1/4)

## **CORNER HISTORY:**

August 23, 1963 - Set cast iron monument using area resurvey and established ties to monument.

August 11, 1964 - Found cast iron monument and updated ties.

June 30, 1969 - Found cast iron monument and updated ties.

July 31, 1972 - Found cast iron monument and updated ties.

July 6, 1976 - Found cast iron monument and updated ties.

June 26, 1979 - Found cast iron monument and updated ties.

August 19, 1982 - Found cast iron monument and updated ties.

July 26, 1985 - Found cast iron monument and updated ties.

July 1, 1988 - Found cast iron monument with a sign and post on the north side and updated ties.

August 23, 1993 - Found cast iron monument with a sign and post on the north side and updated ties.

May 15, 2000 - Found cast iron monument with a sign and post on the north side and established NAD 1983 (1996 Adjustment) Anoka County Project Coordinates by Static GPS methods. Updated ties.

April 7, 2010 - Found cast iron monument flush with the surface and updated ties.

October 15, 2015 - Found cast iron monument flush with the surface with a sign and post on the north side and updated ties.