

# CERTIFICATE OF LOCATION OF GOVERNMENT CORNER

County of Anoka

State of Minnesota

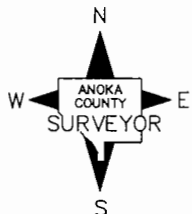
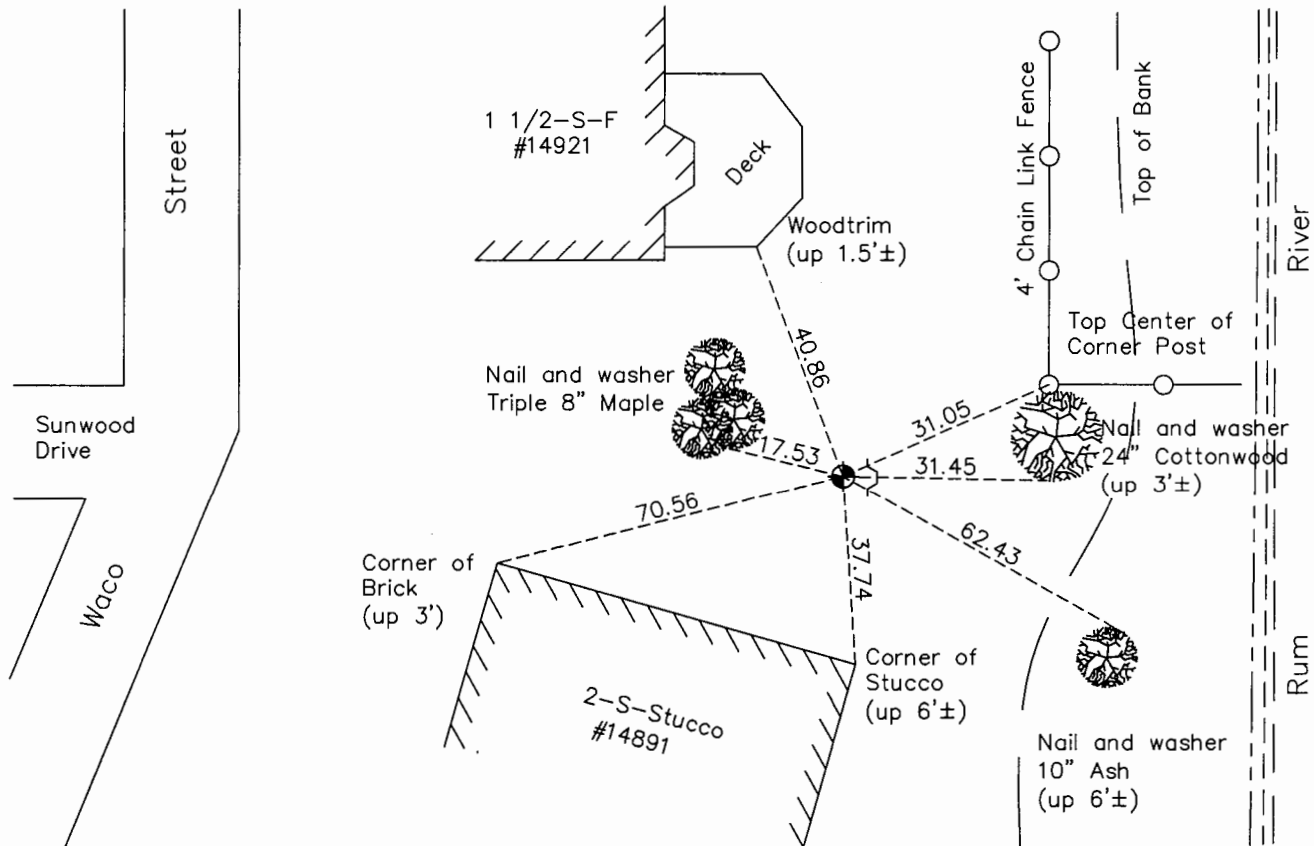
Witness Corner of Sec. 24 Township 32 Range 25  
 (On south line of SE 1/4)

On the 11th day of July, 1963, the described corner was evidenced by area resurvey

and to perpetuate the location of said corner, at the exact location thereof, a permanent marker was placed consisting of a cast iron monument with a sign and post on the east side

AND on the 15th day of October, 2015, said permanent marker was found down 1'± and the ties were updated

Updated reference ties are as shown below.



Revision Date  
8/12/16

N.A.D. 1983 Coordinates  
 (1996 Adjustment)

County Project Coordinates	
Northing	175090.1709
Easting	467247.2366
Date	5/09/00

I hereby certify that this United States public land survey monument record is correct and complete to the best of my knowledge and belief.

*Larry D. Hoium* Date 8/25/16

Larry D. Hoium, Anoka County Surveyor  
 Minnesota License Number 18165

# HISTORY OF GOVERNMENT CORNER

Page No. 94

County of Anoka

State of Minnesota

Witness Corner of Sec. 24 Township 32 Range 25  
(On south line of SE 1/4)

## **CORNER HISTORY:**

July 11, 1963 - Set cast iron monument 1282 feet east of South 1/4 corner and down 0.3'± using area resurvey and established ties to monument.

August 11, 1964 - Found cast iron monument and updated ties.

June 24, 1969 - Found cast iron monument down 0.7'± and updated ties.

August 8, 1972 - Found cast iron monument and updated ties.

July 6, 1976 - Found cast iron monument and updated ties.

June 26, 1979 - Found cast iron monument and updated ties.

August 17, 1982 - Found cast iron monument and updated ties.

October 17, 1984 - Set construction ties prior to road construction.

June 13, 1985 - Set cast iron monument after road construction using construction ties . Updated ties.

July 1, 1988 - Found cast iron monument and updated ties.

August 27, 1993 - Updated ties to cast iron monument down 1'± after construction and verified location using area resurvey. Set sign and post on the east side of monument.

May 9, 2000 - Found cast iron monument down 1.5'± with a sign and post on the east side and established NAD 1983 ( 1996 Adjustment) Anoka County Project Coordinates by Static GPS methods. Updated ties.

April 7, 2010 - Found cast iron monument down 1.5'± and updated ties.

October 15, 2015 - Found cast iron monument down 1'± with a sign and post on the east side and updated ties.