

CERTIFICATE OF LOCATION OF GOVERNMENT CORNER

County of Anoka

State of Minnesota

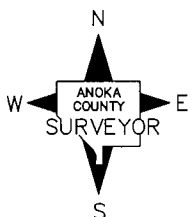
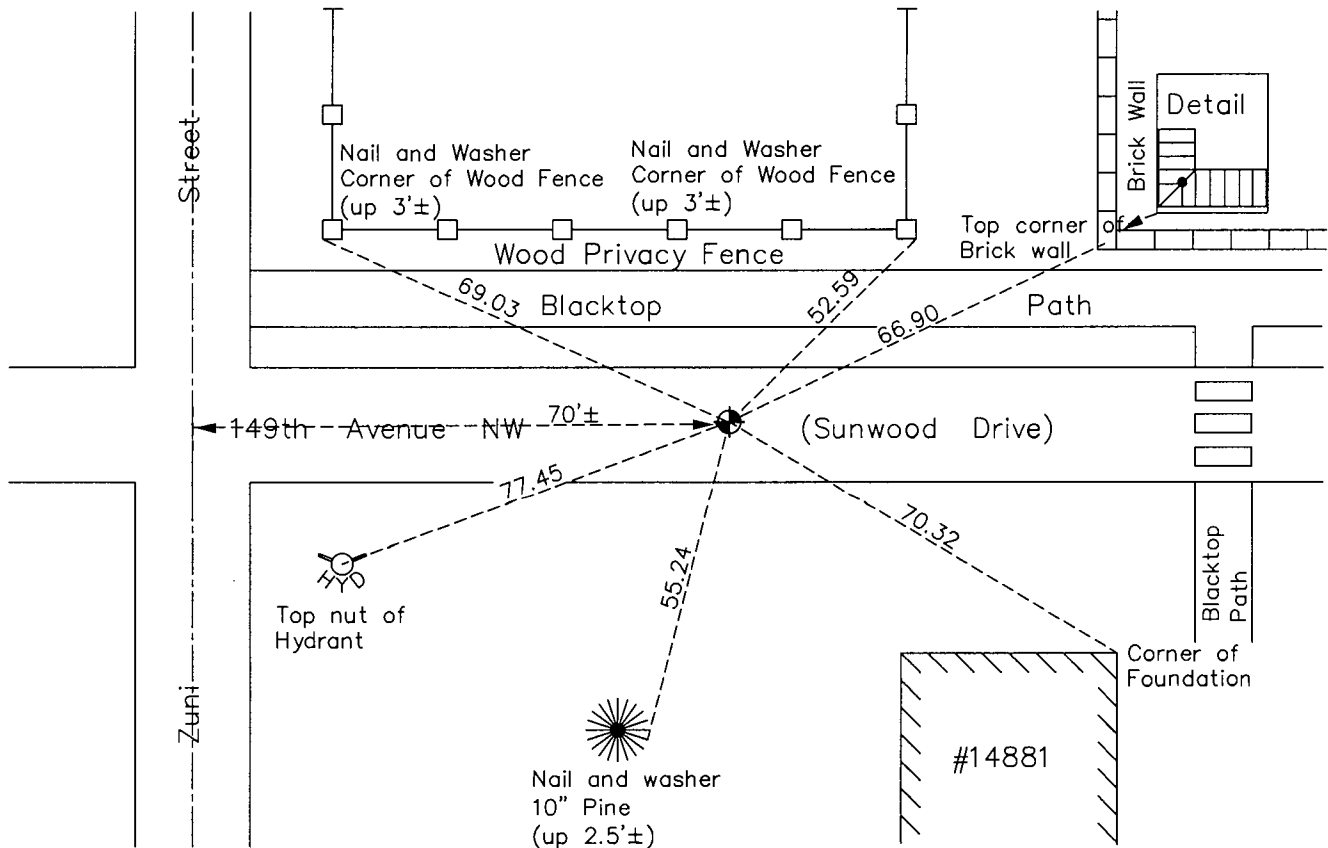
South $\frac{1}{4}$ Corner of Sec. 24 Township 32 Range 25

On the 26th day of July, 1961, the described corner was evidenced by a 1" iron pipe

and to perpetuate the location of said corner, at the exact location thereof, a permanent marker was placed consisting of a cast iron monument

AND on the 16th day of October, 2015, said permanent marker was found flush and the ties were updated

Updated reference ties are as shown below.



Revision Date
8/12/16

N.A.D. 1983 Coordinates
(1996 Adjustment)

County Project Coordinates	
Northing	175080.1101
Easting	465965.6631
Date	4/04/00

I hereby certify that this United States public land survey monument record is correct and complete to the best of my knowledge and belief.

Larry D. Hoium Date 8/29/16

Larry D. Hoium, Anoka County Surveyor
Minnesota License Number 18165

HISTORY OF GOVERNMENT CORNER

County of Anoka

State of Minnesota

South 1/4 Corner of Sec. 24 Township 32 Range 25

CORNER HISTORY:

April 15, 1961 - Ray Prasch of Cartwright and Olson set a 1" X 4' iron pipe and established ties to iron pipe.

July 26, 1961 - Found 1" iron pipe up 0.5'± and updated ties.

August 11, 1964 - Found 1" iron pipe down 0.3'± and updated ties.

June 24, 1969 - Replaced 1" iron pipe with a cast iron monument set up 0.1'± and updated ties. Set sign and post on the north side of monument.

August 8, 1972 - Found cast iron monument and updated ties.

July 6, 1976 - Found cast iron monument and updated ties.

August 17, 1982 - Found cast iron monument and updated ties.

June 27, 1979 - Found cast iron monument and updated ties.

October 17, 1984 - Set P.K. nail after road construction and verified position using ties .

June 14, 1985 - Replaced P.K. nail with a cast iron monument and updated ties.

July 1, 1988 - Lowered cast iron monument and updated ties.

August 10, 1993 - Found cast iron monument and updated ties.

April 4, 2000 - Found cast iron monument and established NAD 1983 (1996 Adjustment) Anoka County Project Coordinates by Static GPS methods. Updated ties.

April 7, 2010 - Found cast iron monument flush with the surface and updated ties.

October 16, 2015 - Found cast iron monument flush with the surface and updated ties.