

CERTIFICATE OF LOCATION OF GOVERNMENT CORNER

County of Anoka

State of Minnesota

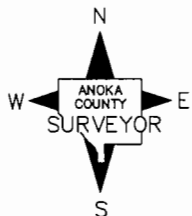
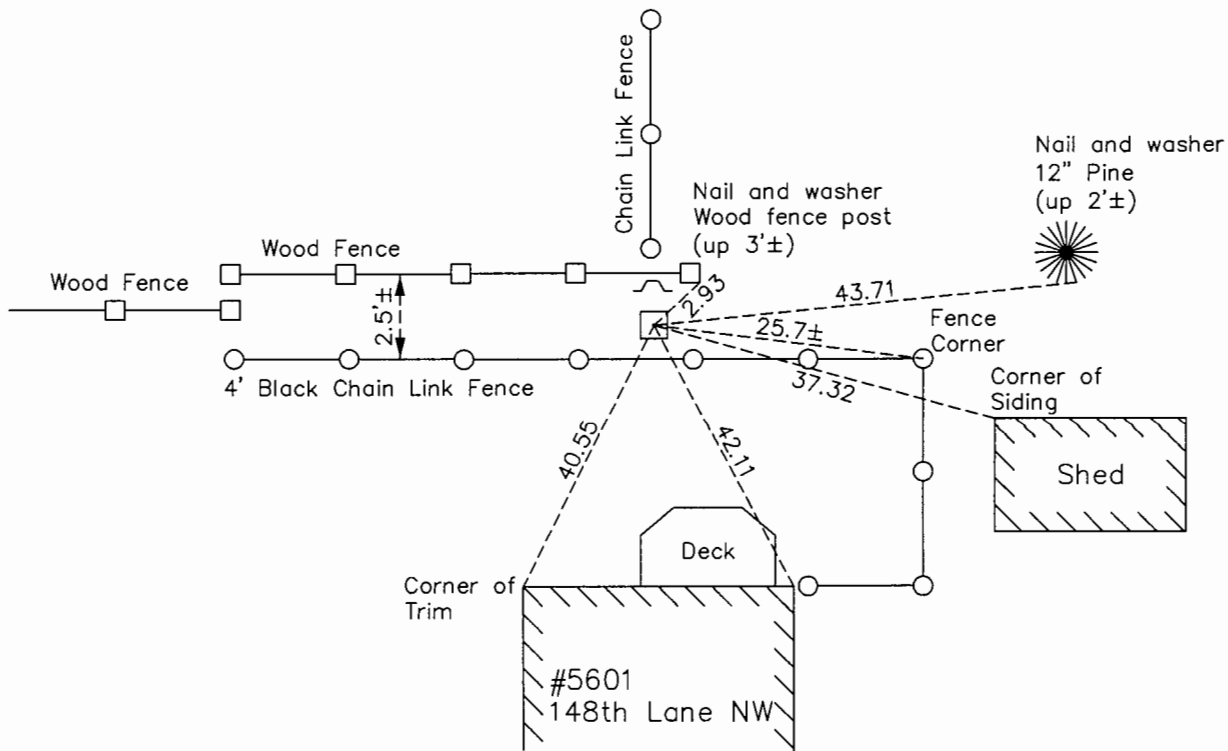
Northwest Corner of Sec. 25 Township 32 Range 25

On the 28th day of July, 1959, the described corner was evidenced by a granite monument

and to perpetuate the location of said corner, at the exact location thereof, a permanent marker was placed consisting of the same granite monument with a sign and post on the north side

AND on the 16th day of October, 2015, said permanent marker was found and the ties were updated

Updated reference ties are as shown below.



Revision Date

8/12/16

N.A.D. 1983 Coordinates
(1996 Adjustment)

County Project Coordinates	
Northing	175118.3309
Easting	463332.6977
Date	4/26/00

I hereby certify that this United States public land survey monument record is correct and complete to the best of my knowledge and belief.

Larry D. Hoium Date 8/29/16

Larry D. Hoium, Anoka County Surveyor

Minnesota License Number 18165

HISTORY OF GOVERNMENT CORNER

County of Anoka

State of Minnesota

Northwest Corner of Sec. 25 Township 32 Range 25

CORNER HISTORY:

July 28, 1959 - Found granite monument flush with the surface and established ties to monument.

August 11, 1964 - Found granite monument and updated ties.

June 30, 1969- Found granite monument flush with the surface and updated ties. Found angle iron posts on the north side of monument up 3.5'± and on the south side up 3'±.

August 8, 1972 - Found granite monument and updated ties.

July 6, 1976 - Found granite monument and updated ties.

August 22, 1979 - Set construction ties prior to road construction.

August 17, 1982 - Found granite monument and updated ties.

August 17, 1985 - Found granite monument and updated ties.

July 11, 1988 - Found granite monument and updated ties.

August 16, 1993 - Found granite monument and updated ties.

May 8, 1996 - Found granite monument and updated ties.

April 26, 2000 - Found granite monument with sign and post on the north side and established NAD 1983 (1996 Adjustment) Anoka County Project Coordinates by Static GPS methods. Updated ties.

April 22, 2010 - Found granite monument with a sign and post on the north side and updated ties.

October 16, 2015 - Found granite monument with a sign and post on the north side and updated ties.