

# CERTIFICATE OF LOCATION OF GOVERNMENT CORNER

County of Anoka

State of Minnesota

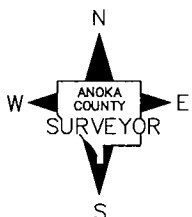
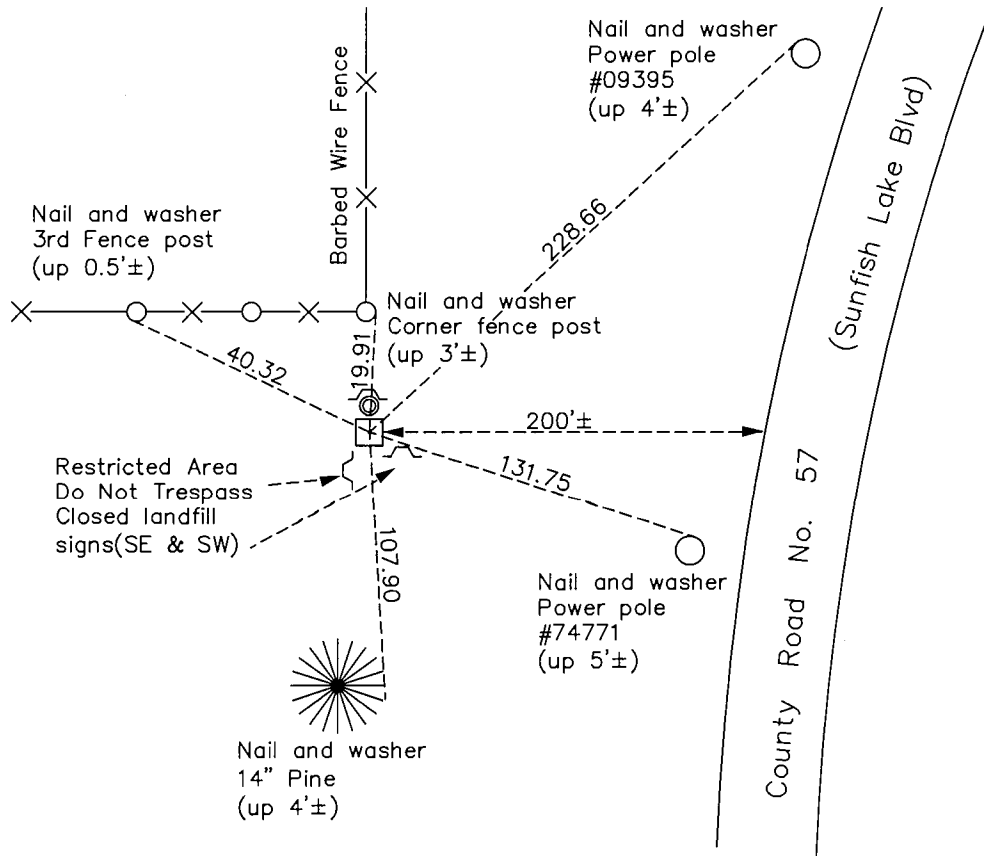
## Northwest Corner of Sec. 26 Township 32 Range 25

On the 9th day of February, 1960, the described corner was evidenced by a granite monument

and to perpetuate the location of said corner, at the exact location thereof, a permanent marker was placed consisting of the same granite monument

AND on the 13th day of July, 2015, said permanent marker was found down 0.6' with a 1/2" iron pipe and sign and post on the north side and the ties were updated

Updated reference ties are as shown below.



Revision Date

8/12/16

N.A.D. 1983 Coordinates  
(1996 Adjustment)

County Project Coordinates	
Northing	<u>175087.8788</u>
Easting	<u>458102.0034</u>
Date	<u>8/30/99</u>

I hereby certify that this United States public land survey monument record is correct and complete to the best of my knowledge and belief.

Date 8/29/16  
 Larry D. Hoium, Anoka County Surveyor  
 Minnesota License Number 18165

# HISTORY OF GOVERNMENT CORNER

County of Anoka

State of Minnesota

## Northwest Corner of Sec. 26 Township 32 Range 25

### **CORNER HISTORY:**

April 20, 1943 - Cartwright found granite monument down 1'± and established ties to monument.

September 11, 1957 - Found 6" X 6" X 3' granite monument laying on side. Straightened and set monument down 1'± using old ties. Updated ties to monument.

February 9, 1960 - Found granite monument and updated ties.

August 6, 1964 - Found granite monument down 0.5'± and updated ties. Set iron pipe on north side of monument.

June 25, 1969 - Found granite monument with iron pipe on north side and updated ties.

July 28, 1972 - Found granite monument and updated ties.

August 6, 1974 - Set construction ties prior to road construction.

June 25, 1979 - Found granite monument and updated ties.

August 17, 1982 - Found granite monument and updated ties.

June 17, 1988 - Found granite monument and updated ties.

August 12, 1993 - Found granite monument and updated ties.

August 30, 1999 - Found granite monument and established NAD 1983 ( 1996 Adjustment) Anoka County Project Coordinates by Static GPS methods. Updated ties.

April 1, 2010 - Found granite monument down 0.6'± with a 1/2" iron pipe on the north side and updated ties.

July 13, 2015 - Found granite monument down 0.6'± with a 1/2" iron pipe on the north side and updated ties. Also found sign and post on the north side and "Restricted Area Do Not Trespass Closed Landfill" signs on the southeast and southwest sides. Verified location of corner by VRS GPS methods.