

# CERTIFICATE OF LOCATION OF GOVERNMENT CORNER

County of Anoka

State of Minnesota

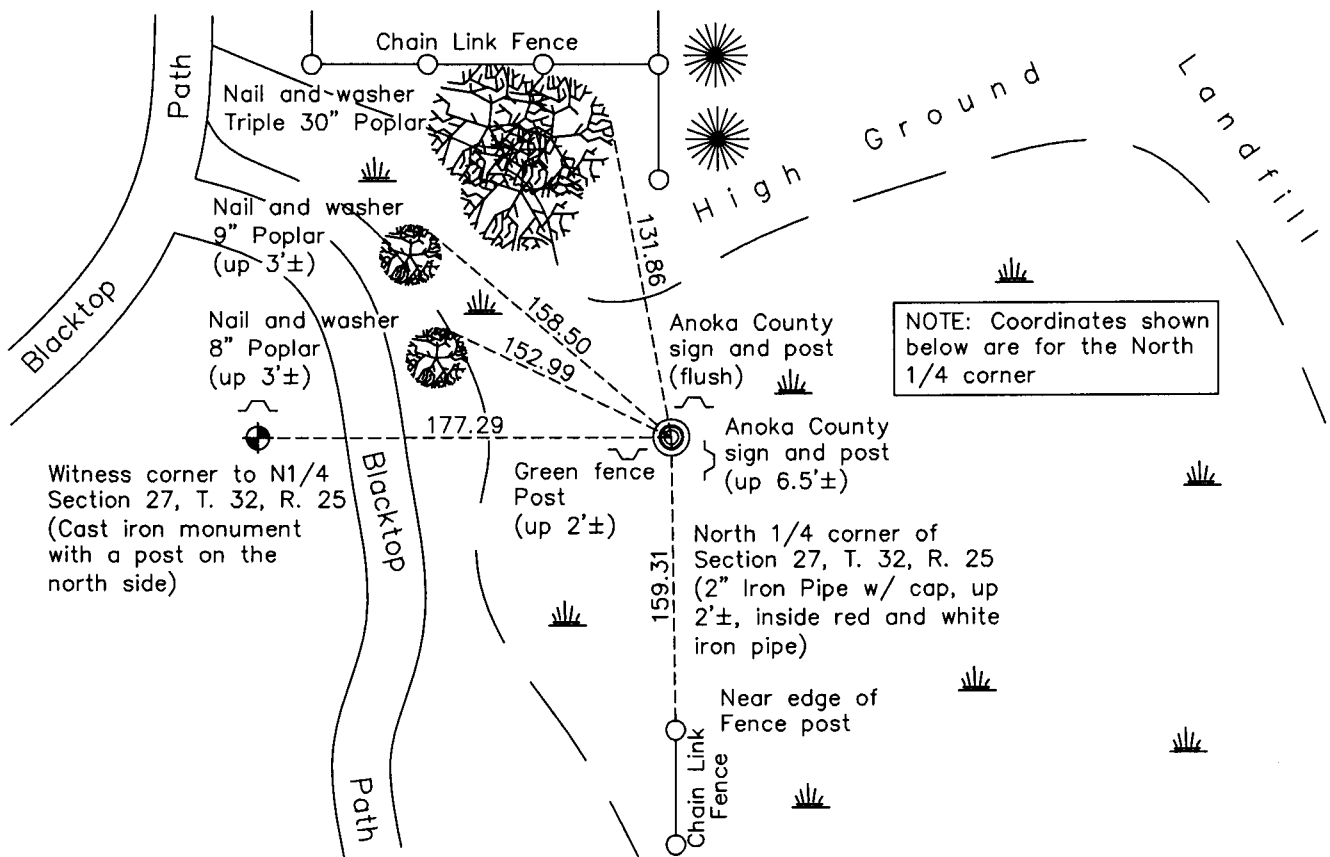
## North 1/4 Corner of Sec. 27 Township 32 Range 25

On the 17th day of September, 1975, the described corner was evidenced by area resurvey

and to perpetuate the location of said corner, at the exact location thereof, a permanent marker was placed consisting of a red and white iron pipe up 1' with a cast iron monument set as a witness corner to the west

AND on the 2nd day of March, 2011, said permanent marker was found under water. Set 2" iron pipe, up 2'±, with punch mark in 'County Surveyor' cap inside found red & white iron pipe.

Updated reference ties are as shown below.



NOTE: Coordinates shown below are for the North 1/4 corner

ANOKA COUNTY SURVEYOR

Revision Date

7/19/11

N.A.D. 1983 Coordinates  
(1996 Adjustment)

County Project Coordinates	
Northing	175093.6489
Easting	455468.6027
Date	5/04/00

I hereby certify that this United States public land survey monument record is correct and complete to the best of my knowledge and belief.

*Larry D. Hoium* Date 7/19/11

Larry D. Hoium, Anoka County Surveyor

Minnesota License Number 18165

# HISTORY OF GOVERNMENT CORNER

Page No. 99

County of Anoka

State of Minnesota

## North 1/4 Corner of Sec. 27 Township 32 Range 25

### **CORNER HISTORY:**

January 5, 1961 - Found 1" iron pipe up 2'± in swamp. Established ties to monument.

January 21, 1974 - Replaced 1" iron pipe with a 2.5" iron pipe set up 0.5'± and updated ties.

September 17, 1975 - Set cast iron monuments as witness corners to the North 1/4 corner using area resurvey. Also set signs and posts on the north side of both monuments.

July 6, 1976 - Found cast iron monument witness corners.

August 12, 1993 - Found cast iron monument witness corners with signs and posts on the north side.

May 4, 2000 - Found iron pipe at location of North 1/4 corner and westerly cast iron monument witness corner and established NAD 1983 (1996 Adjustment) Anoka County Project Coordinates by Static GPS methods for both corners.

January 8, 2001 - Found easterly cast iron monument witness corner missing. Found westerly cast iron monument witness corner and found red and white iron pipe up 1'± at location of North 1/4 corner.

March 2, 2011 - Found red and white iron pipe under water at the location of the North 1/4 corner. Set 2" iron pipe inside found iron pipe up 2'± with a punch mark in a cap on top. Established ties to iron pipe and verified location of corner by VRS GPS methods. Also found an Anoka County sign and post on the north side flush with the surface, an Anoka County sign and post on the southeast side up 6'± and a green fence post on the west side up 2'±.