

# CERTIFICATE OF LOCATION OF GOVERNMENT CORNER

County of Anoka

State of Minnesota

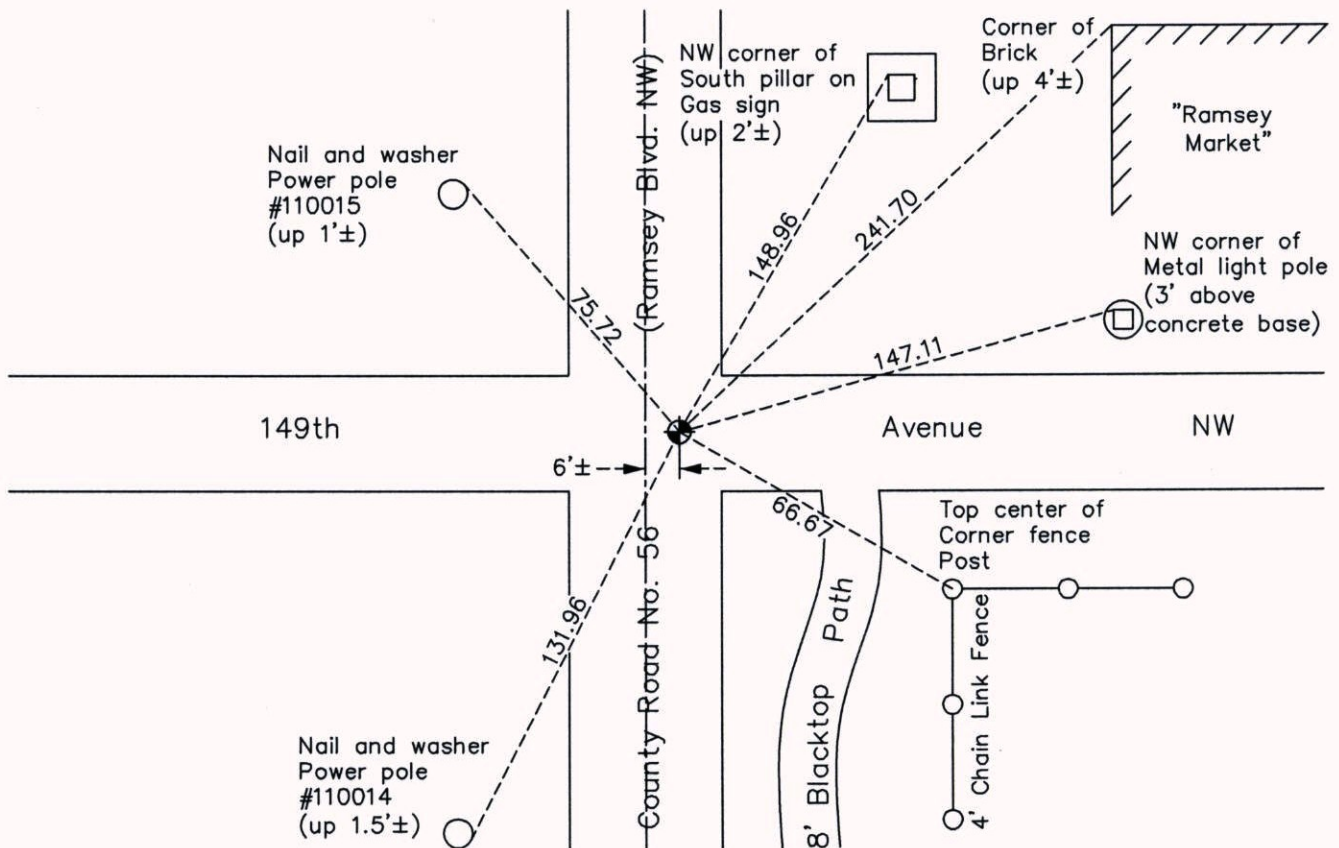
## Northwest Corner of Sec. 27 Township 32 Range 25

On the 5th day of January, 1961, the described corner was evidenced by a 1/2" iron pipe

and to perpetuate the location of said corner, at the exact location thereof, a permanent marker was placed consisting of a cast iron monument

AND on the 10th day of July, 2014, said permanent marker was replaced with a new cast iron monument after road construction and the ties were updated

Updated reference ties are as shown below.



Revision Date  
10/07/14

N.A.D. 1983 Coordinates  
(1996 Adjustment)

County Project Coordinates	
Northing	175098.6417
Easting	452834.2316
Date	12/17/99

I hereby certify that this United States public land survey monument record is correct and complete to the best of my knowledge and belief.

*Larry D. Hoium* Date 10/07/14

Larry D. Hoium, Anoka County Surveyor  
Minnesota License Number 18165

# HISTORY OF GOVERNMENT CORNER

County of Anoka

State of Minnesota

## Northwest Corner of Sec. 27 Township 32 Range 25

### **CORNER HISTORY:**

January 5, 1961 - Found 1/2" iron pipe in centerline of blacktop road and established ties to monument.

August 7, 1964 - Found 1/2" iron pipe and updated ties.

June 26, 1969 - Found 1/2" iron pipe down 0.1'± and 3'± west of centerline of road and updated ties. Set P.K. nails 2.00' north and east of iron pipe.

July 24, 1969 - Replaced 1/2" iron pipe with a cast iron monument set flush with the surface. Updated ties.

August 17, 1972 - Found cast iron monument and updated ties.

July 7, 1976 - Found cast iron monument and updated ties.

June 25, 1979 - Found cast iron monument and updated ties.

April 14, 1982 - Found cast iron monument and updated ties prior to road construction.

July 20, 1982 - Set cast iron monument flush with surface after road construction using ties. Set P.K. nails 2.00' north and east of monument.

July 17, 1985 - Found cast iron monument and updated ties.

June 17, 1988 - Found cast iron monument and updated ties.

August 6, 1993 - Found cast iron monument and updated ties.

December 17, 1999 - Found cast iron monument and established NAD 1983 (1996 Adjustment) Anoka County Project Coordinates by Static GPS methods. Updated ties.

April 30, 2010 - Found cast iron monument flush with the surface and updated ties.

May 30, 2014 - Updated ties and removed cast iron monument prior to road construction. Verified location of corner by VRS GPS methods.

July 10, 2014 - Set cast iron monument after road construction using ties. Verified location of corner by VRS GPS methods.