

CERTIFICATE OF LOCATION OF GOVERNMENT CORNER

County of Anoka

State of Minnesota

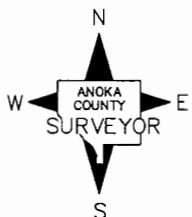
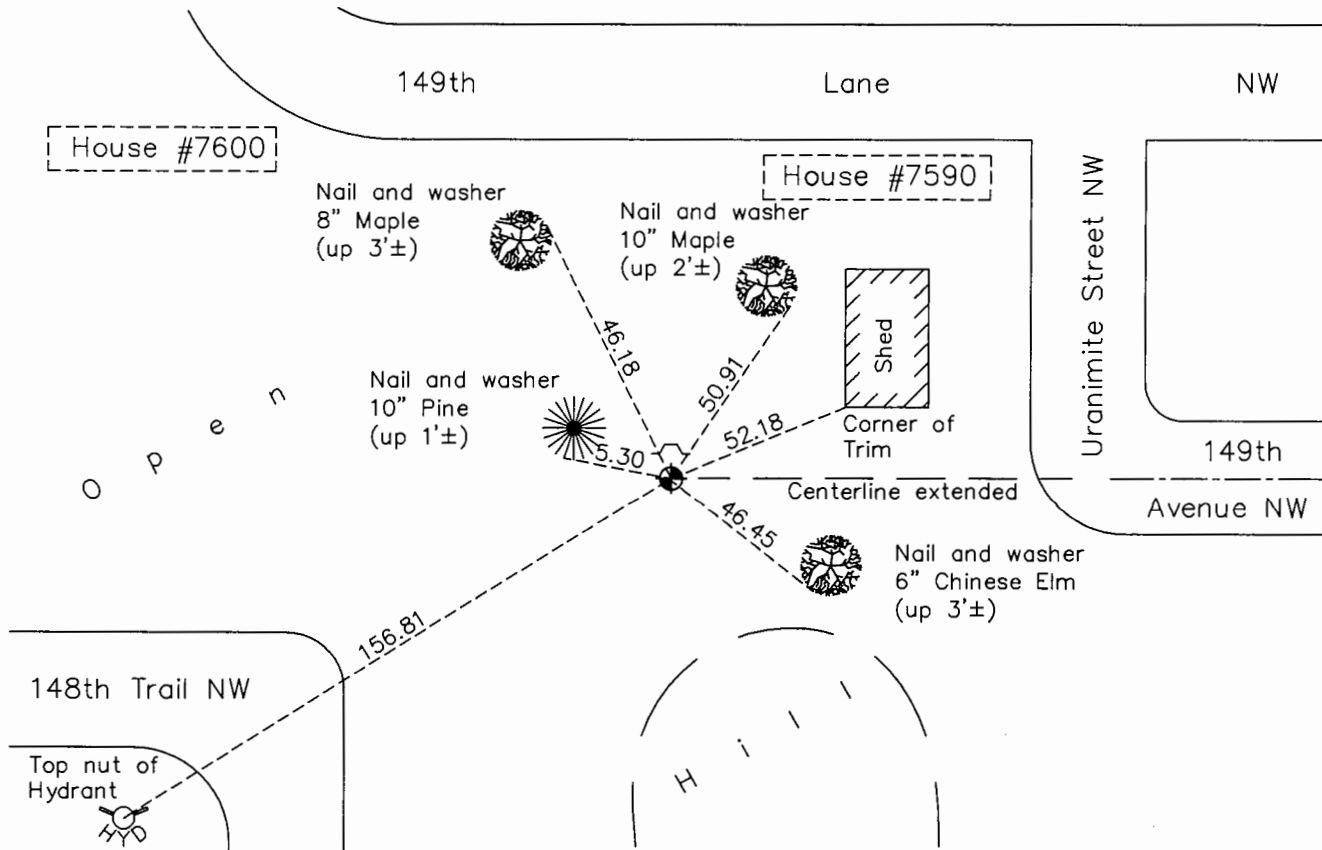
South 1/4 Corner of Sec. 21 Township 32 Range 25

On the 19th day of June, 1964, the described corner was evidenced by area resurvey

and to perpetuate the location of said corner, at the exact location thereof, a permanent marker was placed consisting of a cast iron monument with a sign and post on the north side

AND on the 16th day of October, 2015, said permanent marker was found and the ties were updated

Updated reference ties are as shown below.



Revision Date
8/12/16

N.A.D. 1983 Coordinates
(1996 Adjustment)

County Project Coordinates	
Northing	<u>175111.7163</u>
Easting	<u>450183.2815</u>
Date	<u>12/22/99</u>

I hereby certify that this United States public land survey monument record is correct and complete to the best of my knowledge and belief.

Larry D. Hoium Date 8/29/16

Larry D. Hoium, Anoka County Surveyor
Minnesota License Number 18165

HISTORY OF GOVERNMENT CORNER

Page No. 101

County of Anoka

State of Minnesota

South 1/4 Corner of Sec. 21 Township 32 Range 25

CORNER HISTORY:

June 19, 1964 - Set cast iron monument using area resurvey and established ties to monument.

June 26, 1969 - Found cast iron monument and updated ties.

August 17, 1972 - Found cast iron monument and updated ties.

July 7, 1976 - Found cast iron monument and updated ties.

June 25, 1979 - Found cast iron monument and updated ties.

August 19, 1982 - Found cast iron monument and updated ties.

July 17, 1985 - Found cast iron monument and updated ties.

June 16, 1988 - Found cast iron monument and updated ties.

August 12, 1993 - Found cast iron monument and updated ties.

December 22, 1999 - Found cast iron monument with a sign and post on the north side and established NAD 1983 (1996 Adjustment) Anoka County Project Coordinates by Static GPS methods. Updated ties.

April 12, 2010 - Found cast iron monument and updated ties.

October 16, 2015 - Found cast iron monument and updated ties.