

# CERTIFICATE OF LOCATION OF GOVERNMENT CORNER

County of Anoka

State of Minnesota

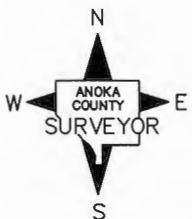
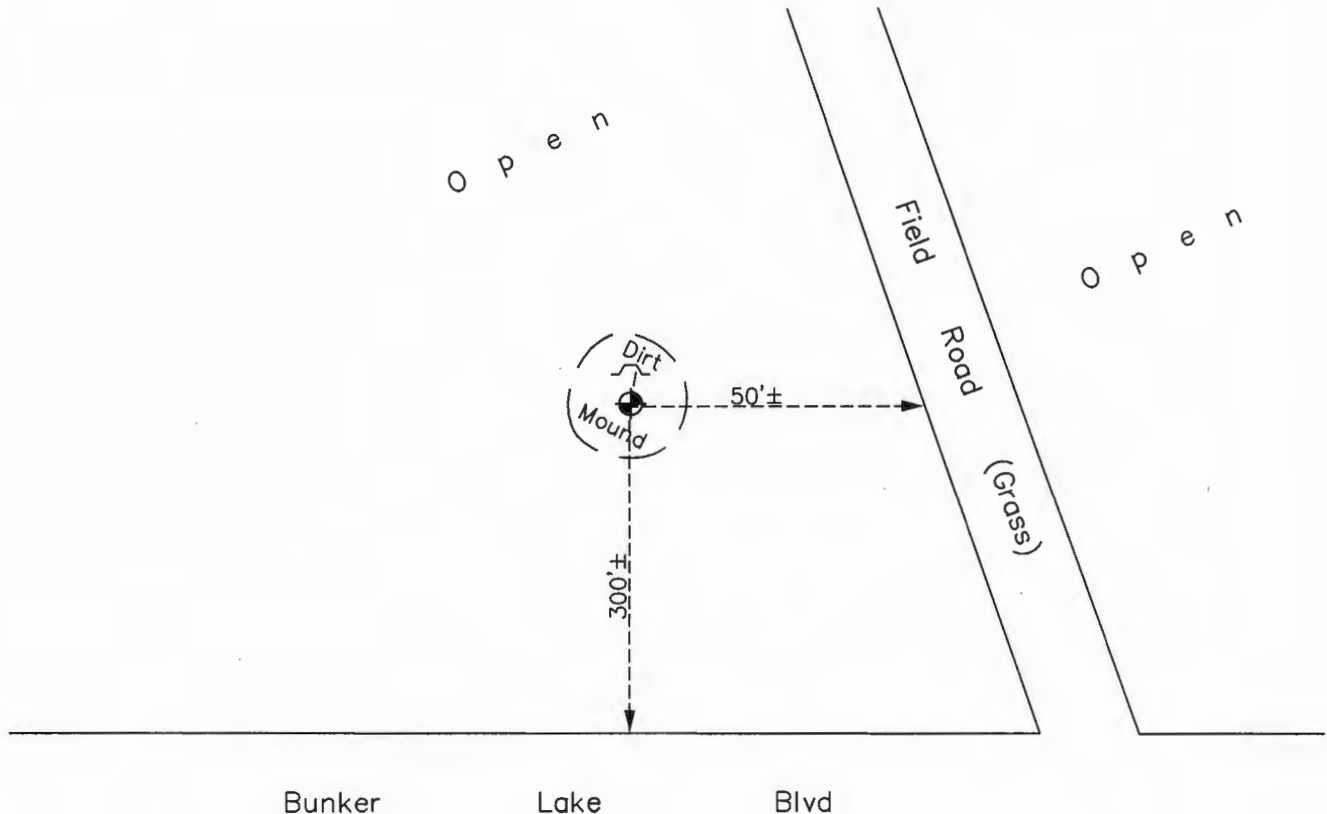
## South 1/4 Corner of Sec. 20 Township 32 Range 25

On the 19th day of June, 1964, the described corner was evidenced by a concrete monument

and to perpetuate the location of said corner, at the exact location thereof, a permanent marker was placed consisting of a cast iron monument with a sign and post on the east side

AND on the 22nd day of October, 2015, said permanent marker was found on a 3' dirt mound and the ties were updated. Found a sign and post on the north side.

Updated reference ties are as shown below.



Revision Date  
8/12/16

N.A.D. 1983 Coordinates  
(1996 Adjustment)

County Project Coordinates	
Northing	<u>175149.5092</u>
Easting	<u>444887.5798</u>
Date	<u>5/15/00</u>

I hereby certify that this United States public land survey monument record is correct and complete to the best of my knowledge and belief.

*Larry B. Hoium* Date 8/29/16

Larry B. Hoium, Anoka County Surveyor

Minnesota License Number 18165

# HISTORY OF GOVERNMENT CORNER

County of Anoka

State of Minnesota

## South 1/4 Corner of Sec. 20 Township 32 Range 25

### **CORNER HISTORY:**

June 19, 1964 - Found 4" square concrete monument down 0.5'± with top broken off. Straightened and established ties to monument.

June 20, 1969 - Found concrete monument and updated ties. Set 3/4" iron pipe on east side and a sign and post on the south side of monument.

July 18, 1972 - Replaced concrete monument with a cast iron monument set down 0.5'±. Updated ties.

July 7, 1976 - Found cast iron monument and updated ties.

June 25, 1979 - Found cast iron monument and updated ties.

August 13, 1982 - Found cast iron monument and updated ties.

July 28, 1985 - Found cast iron monument and updated ties.

June 27, 1988 - Found cast iron monument and updated ties.

April 26, 1993 - Found cast iron monument down 1'± with sign and post on south side and re-established ties, destroyed by fire.

August 9, 1993 - Found cast iron monument and updated ties.

May 15, 2000 - Found cast iron monument with sign and post on east side and established NAD 1983 (1996 Adjustment) Anoka County Project Coordinates by Static GPS methods. Set construction ties due to dirt mining in the area.

April 13, 2010 - Found cast iron monument down 0.8'± on 3' dirt mound. Set a sign and post on the north side and updated ties.

October 22, 2015 - Found cast iron monument on a 3' dirt mound with a sign and post on the north side and updated ties. Verified location of corner by VRS GPS methods.