

CERTIFICATE OF LOCATION OF GOVERNMENT CORNER

County of Anoka

State of Minnesota

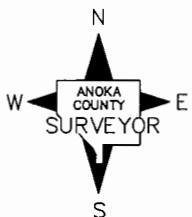
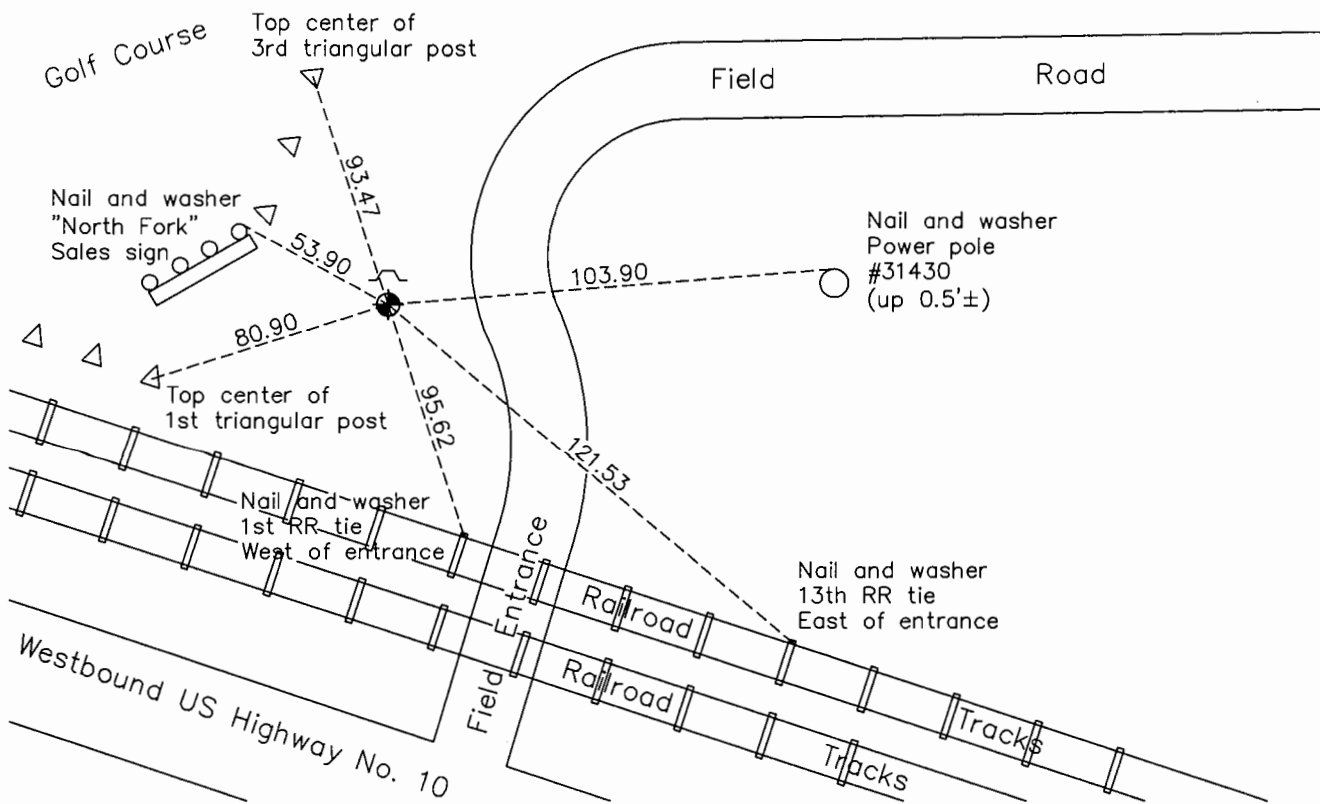
Southwest Corner of Sec. 20 Township 32 Range 25

On the 17th day of June, 1969, the described corner was evidenced by a 3/4" iron pipe

and to perpetuate the location of said corner, at the exact location thereof, a permanent marker was placed consisting of a cast iron monument

AND on the 16th day of October, 2015, said permanent marker was found down 2'± and the ties were updated. Found a sign and post on the north side.

Updated reference ties are as shown below.



Revision Date
8/12/16

N.A.D. 1983 Coordinates
(1996 Adjustment)

County Project Coordinates	
Northing	175177.6412
Easting	442215.4163
Date	5/05/00

I hereby certify that this United States public land survey monument record is correct and complete to the best of my knowledge and belief.

Larry D. Hoium Date 8/29/16

Larry D. Hoium, Anoka County Surveyor

Minnesota License Number 18165

HISTORY OF GOVERNMENT CORNER

Page No. 104

County of Anoka

State of Minnesota

Southwest Corner of Sec. 20 Township 32 Range 25

CORNER HISTORY:

May 1952 - Egan, Field and Nowak found iron pipe and established ties to iron pipe.

April 17, 1962 - Found 3/4" iron pipe flush with the surface, fitting old ties, and updated ties.

August 7, 1964 - Found 3/4" iron pipe 2'± east of fence line and updated ties.

June 17, 1969 - Replaced 3/4" iron pipe with a cast iron monument set up 0.1'±. Updated ties.

August 7, 1972 - Found cast iron monument and updated ties.

July 7, 1976 - Found cast iron monument and updated ties.

June 25, 1979 - Found cast iron monument and updated ties.

August 13, 1982 - Found cast iron monument and updated ties.

July 25, 1985 - Found cast iron monument and updated ties.

June 10, 1988 - Found cast iron monument broken. Replaced with a new cast iron monument and updated ties.

August 9, 1993 - Found cast iron monument and updated ties.

May 5, 2000 - Found cast iron monument and established NAD 1983 (1996 Adjustment) Anoka County Project Coordinates by Static GPS methods. Updated ties.

May 6, 2010 - Found cast iron monument and updated ties. Set sign and post on the north side.

October 16, 2015 - Found cast iron monument down 2'± with a sign and post on the north side and updated ties.