

CERTIFICATE OF LOCATION OF GOVERNMENT CORNER

County of Anoka

State of Minnesota

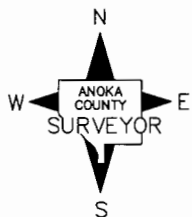
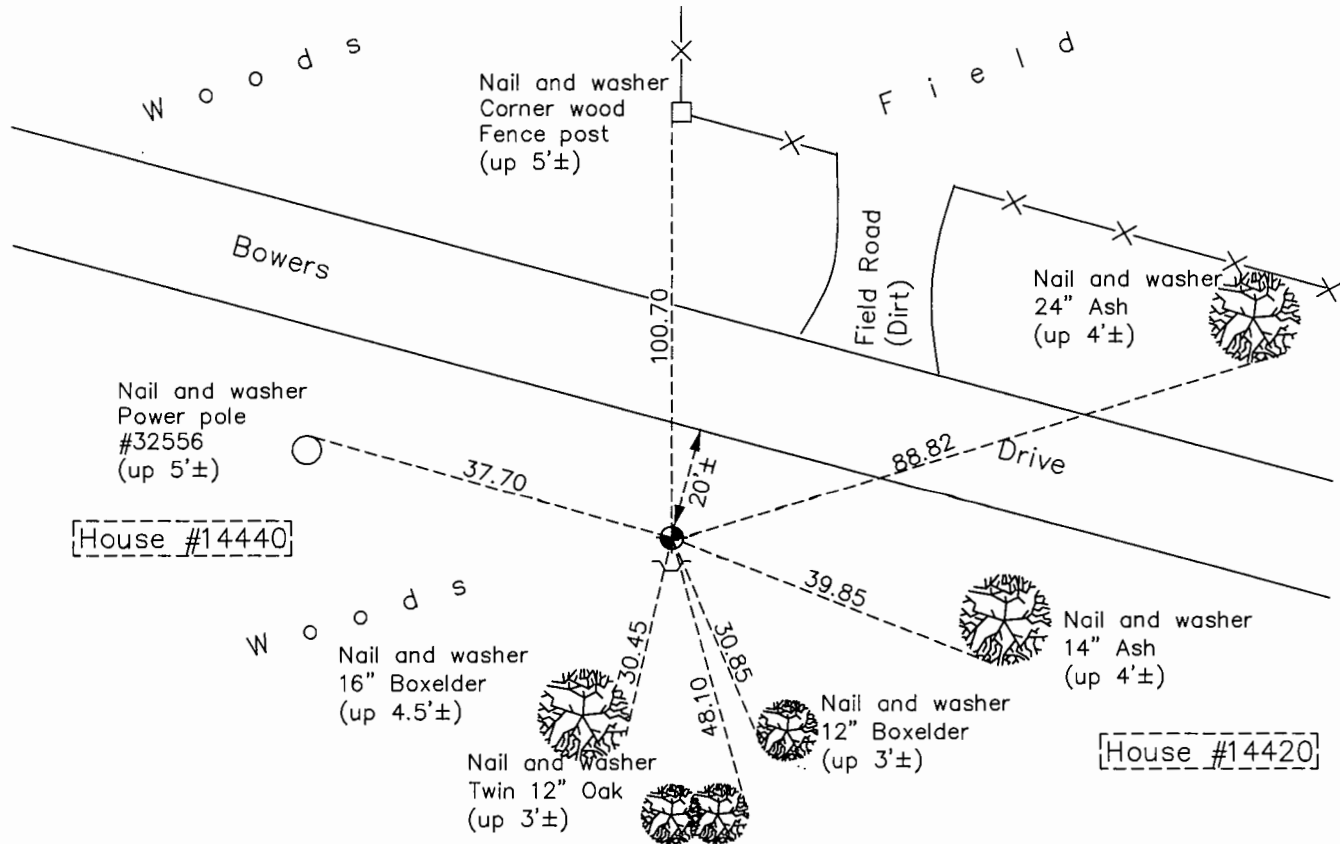
Witness Corner of Sec. 29 Township 32 Range 25
 (On west line of section)

On the 11th day of May, 1987, the described corner was evidenced by the survey of
"Bowers Addition"

and to perpetuate the location of said corner, at the exact location thereof, a permanent marker was placed consisting of a cast iron monument with a sign and post on the south side

AND on the 21st day of October, 2015, said permanent marker was found down 0.2'± and
the ties were updated

Updated reference ties are as shown below.



Revision Date
8/15/16

N.A.D. 1983 Coordinates
 (1996 Adjustment)

County Project Coordinates	
Northing	172030.3760
Easting	442215.1294
Date	5/09/00

I hereby certify that this United States public land survey monument record is correct and complete to the best of my knowledge and belief.

Larry D. Hoium Date 8/29/16

Larry D. Hoium, Anoka County Surveyor
 Minnesota License Number 18165

HISTORY OF GOVERNMENT CORNER

County of Anoka

State of Minnesota

Witness Corner of Sec. 29 Township 32 Range 25
(On west line of section)

CORNER HISTORY:

May 11, 1987 - Set cast iron monument flush with the surface using Bowers Addition subdivision and established ties to monument. Also set sign and post on the south side of monument.

June 23, 1988 - Found cast iron monument and updated ties.

August 13, 1993 - Found cast iron monument and updated ties.

May 9, 2000 - Found cast iron monument with sign and post on the south side and established NAD 1983 (1996 Adjustment) Anoka County Project Coordinates by Static GPS methods. Updated ties.

April 13, 2010 - Found cast iron monument and updated ties.

October 21, 2015 - Found cast iron monument down 0.2'± with a sign and post on the south side and updated ties.