

CERTIFICATE OF LOCATION OF GOVERNMENT CORNER

County of Anoka

State of Minnesota

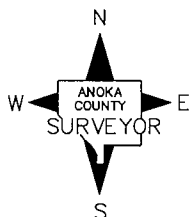
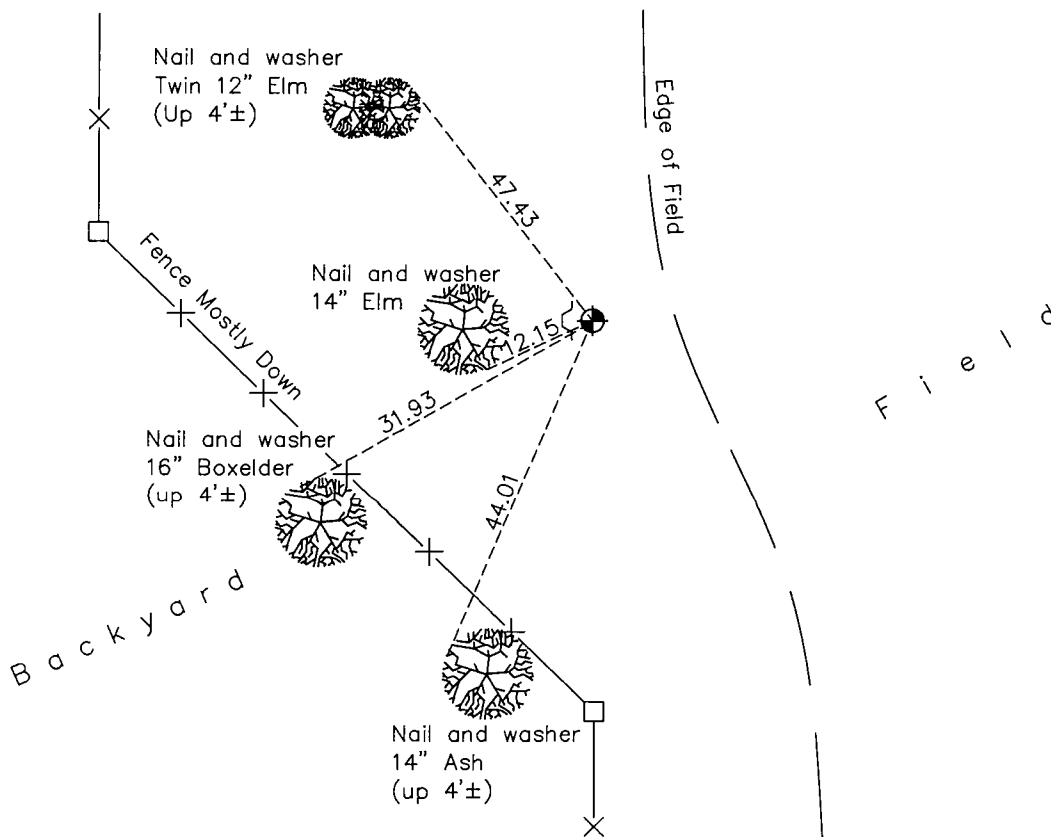
West 1/4 Corner of Sec. 29 Township 32 Range 25

On the 5th day of August, 1975, the described corner was evidenced by a concrete monument

and to perpetuate the location of said corner, at the exact location thereof, a permanent marker was placed consisting of a cast iron monument

AND on the 21st day of October, 2015, said permanent marker was found down 1.5' with a sign and post 4' west and the ties were updated

Updated reference ties are as shown below.



Revision Date
8/15/16

N.A.D. 1983 Coordinates
(1996 Adjustment)

County Project Coordinates	
Northing	172493.3255
Easting	442217.1358
Date	5/15/00

I hereby certify that this United States public land survey monument record is correct and complete to the best of my knowledge and belief.

Larry D. Hoium Date 8/30/16

Larry D. Hoium, Anoka County Surveyor
Minnesota License Number 18165

HISTORY OF GOVERNMENT CORNER

Page No. 106

County of Anoka

State of Minnesota

West 1/4 Corner of Sec. 29 Township 32 Range 25

CORNER HISTORY:

September 14, 1943 - Cartwright found concrete monument down 1'± and established ties to monument.

April 19, 1962 - Found 4" square concrete monument down 0.5'± and updated ties. Set 3/4" iron pipe on the north side of monument.

June 20, 1969 - Found concrete monument and updated ties.

August 7, 1972 - Found concrete monument and updated ties.

August 5, 1975- Replaced broken concrete monument with a cast iron monument set down 1.5'±. Updated ties.

July 7, 1976 - Found cast iron monument and updated ties.

June 22, 1979 - Found cast iron monument and updated ties.

August 13, 1982 - Found cast iron monument and updated ties.

July 25, 1985 - Found cast iron monument and updated ties.

June 27, 1988 - Found cast iron monument and updated ties.

August 13, 1993 - Found cast iron monument and updated ties.

May 15, 2000 - Found cast iron monument and established NAD 1983 (1996 Adjustment) Anoka County Project Coordinates by Static GPS methods. Updated ties.

April 22, 2010 - Found cast iron monument down 1.5'± with a sign and post 4'± west and updated ties.

October 21, 2015 - Found cast iron monument down 1.5'± with a sign and post 4'± west and updated ties.