

CERTIFICATE OF LOCATION OF GOVERNMENT CORNER

County of Anoka

State of Minnesota

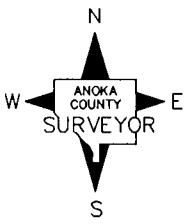
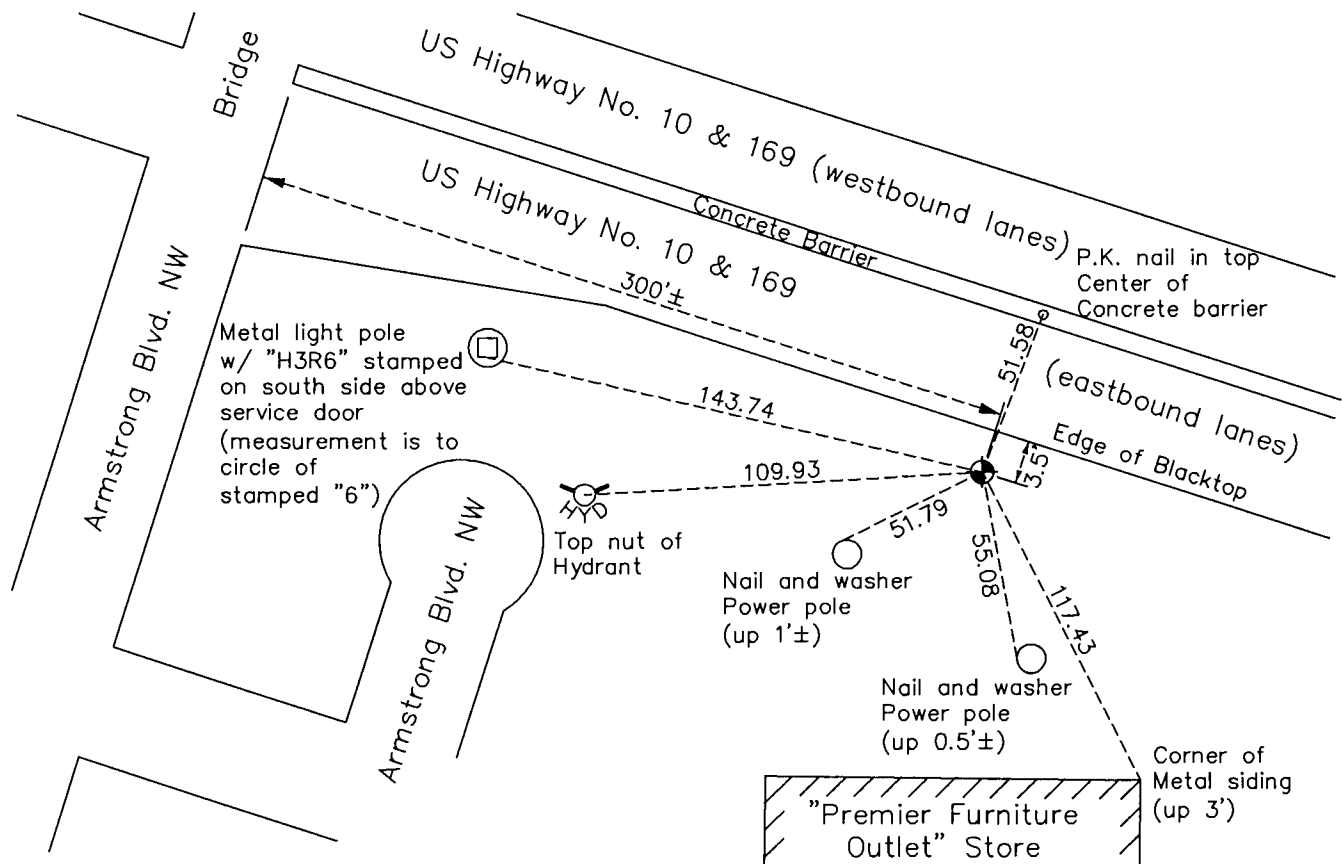
East 1/4 Corner of Sec. 29 Township 32 Range 25

On the 20th day of April, 1961, the described corner was evidenced by a concrete monument

and to perpetuate the location of said corner, at the exact location thereof, a permanent marker was placed consisting of the same concrete monument, down 1.5'±, with a 1" iron pipe on the east side

AND on the 4th day of November, 2016, said permanent marker was replaced with a solid cast iron monument after road construction and the ties were updated

Updated reference ties are as shown below.



Revision Date
12/14/16

N.A.D. 1983 Coordinates
(1996 Adjustment)

County Project Coordinates	
Northing	172474.0871
Easting	447540.6458
Date	5/09/00

I hereby certify that this United States public land survey monument record is correct and complete to the best of my knowledge and belief.

Larry D. Hoium Date 12/14/16

Larry D. Hoium, Anoka County Surveyor
Minnesota License Number 18165

HISTORY OF GOVERNMENT CORNER

County of Anoka

State of Minnesota

East 1/4 Corner of Sec. 29 Township 32 Range 25**CORNER HISTORY:**

September 14, 1943 - Cartwright found concrete monument down 6" established ties to monument.

April 20, 1961 - Found concrete monument down 0.6'± in centerline of highway ditch and updated ties. Set 1/2" iron pipes on east and west sides of monument.

August 7, 1964 - Found concrete monument and updated ties.

June 20, 1969 - Found concrete monument down 1'± and updated ties.

August 7, 1972 - Found concrete monument and updated ties.

June 25, 1979 - Found concrete monument and updated ties.

August 16, 1982 - Found concrete monument and updated ties.

July 19, 1985 - Found concrete monument and updated ties.

June 27, 1988 - Found concrete monument and updated ties.

August 10, 1993 - Found concrete monument and updated ties.

May 9, 2000 - Found concrete monument and established NAD 1983 (1996 Adjustment) Anoka County Project Coordinates by Static GPS methods. Found 1" iron pipe on north side and updated ties.

April 21, 2010 - Found concrete monument down 1.5'± with a 1" iron pipe on the east side and updated ties. Set a sign and post on the north side of monument.

October 8, 2015 - Found concrete monument missing due to road construction.

November 4, 2016 - Reset position of corner with a cast iron monument using ties and verified position by Static GPS methods.