

# CERTIFICATE OF LOCATION OF GOVERNMENT CORNER

County of Anoka

State of Minnesota

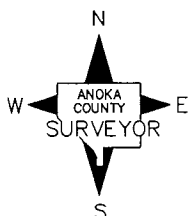
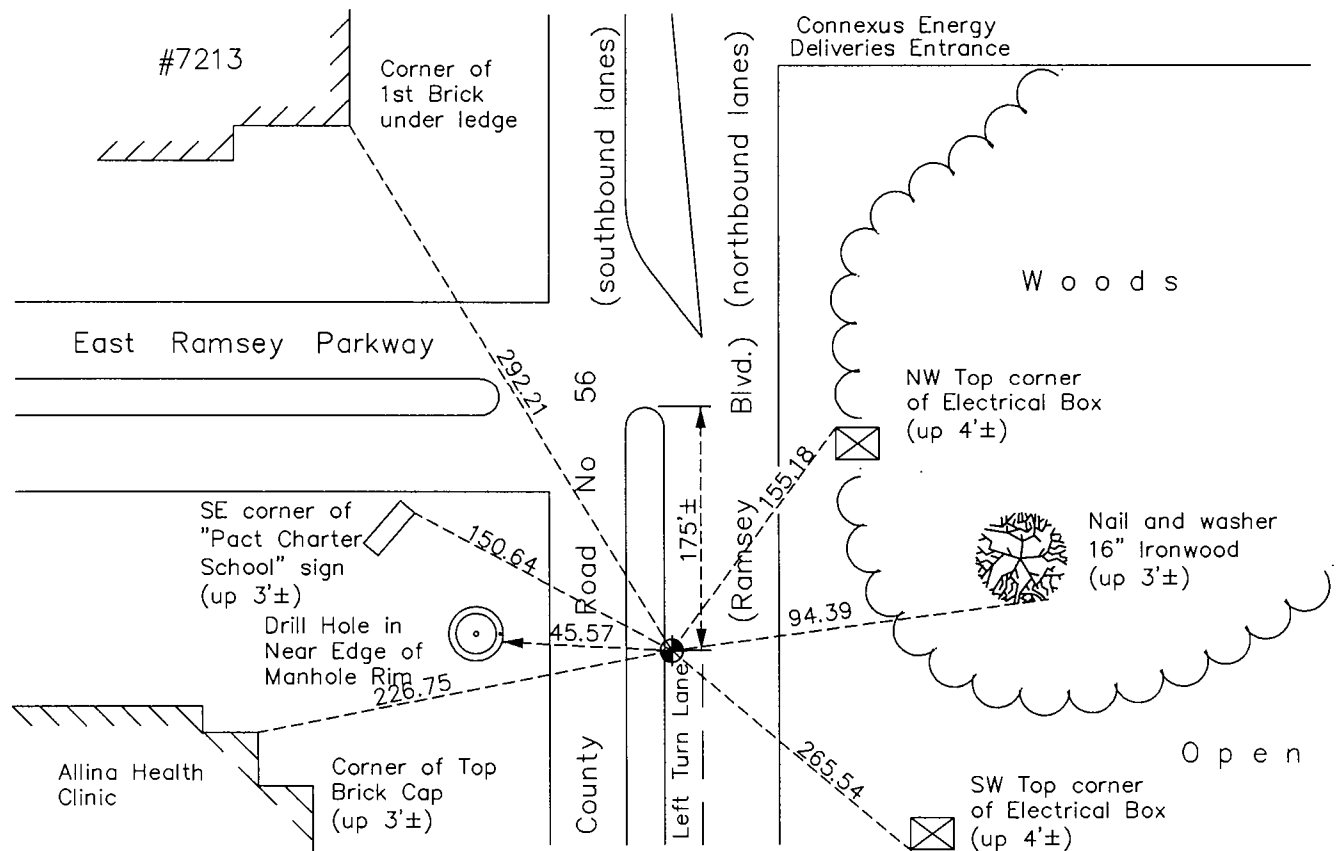
## West 1/4 Corner of Sec. 27 Township 32 Range 25

On the 25th day of August, 1964, the described corner was evidenced by a pinched iron in blacktop

and to perpetuate the location of said corner, at the exact location thereof, a permanent marker was placed consisting of a cast iron monument

AND on the 10th day of November, 2015, said permanent marker was found 2'± East of Median in Turn Lane and the ties were updated.

Updated reference ties are as shown below.



Revision Date  
8/15/16

N.A.D. 1983 Coordinates  
(1996 Adjustment)

County Project Coordinates	
Northing	172448.2597
Easting	452836.4972
Date	2/01/00

I hereby certify that this United States public land survey monument record is correct and complete to the best of my knowledge and belief.

*Larry O. Hoium* Date 8/30/16  
 Larry O. Hoium, Anoka County Surveyor  
 Minnesota License Number 18165

# HISTORY OF GOVERNMENT CORNER

County of Anoka

State of Minnesota

## West 1/4 Corner of Sec. 27 Township 32 Range 25

### **CORNER HISTORY:**

August 25, 1964 - Found pinched iron pipe set flush with the surface in a blacktop road. Established ties to iron pipe.

June 26, 1969 - Found pinched iron pipe down 0.1'± in blacktop road, 2'± west of centerline and updated ties. Set P.K. nails 2.00' north and east of iron pipe.

July 24, 1969 - Replaced pinched iron pipe with a cast iron monument set flush with the surface. Updated ties.

July 26, 1972 - Found cast iron monument and updated ties.

July 7, 1976 - Found cast iron monument and updated ties.

June 25, 1979 - Found cast iron monument and updated ties.

April 14, 1982 - Updated ties prior to road construction.

July 30, 1982 - Set cast iron monument flush with the surface after road construction. Set P.K. nails 2.00' north and east and updated ties.

June 16, 1988 - Found cast iron monument and updated ties.

August 4, 1993 - Found cast iron monument and updated ties.

February 1, 2000 - Found cast iron monument and established NAD 1983 (1996 Adjustment) Anoka County Project Coordinates by Static GPS methods. Updated ties.

June 23, 2004 - Set construction ties and removed cast iron monument prior to road construction.

December 7, 2004 - Set P.K. nail after road construction using ties. Verified location of corner by Static GPS methods on December 8, 2004.

August 31, 2005 - Replaced P.K. nail with a cast iron monument. Updated ties.

April 23, 2010 - Found P.K. nail. Need to reset cast iron monument which falls in concrete apron and updated ties.

November 10, 2015 - Found cast iron monument, date set unknown, and updated ties.