

# CERTIFICATE OF LOCATION OF GOVERNMENT CORNER

County of Anoka

State of Minnesota

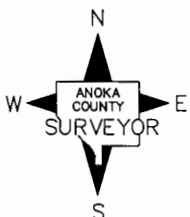
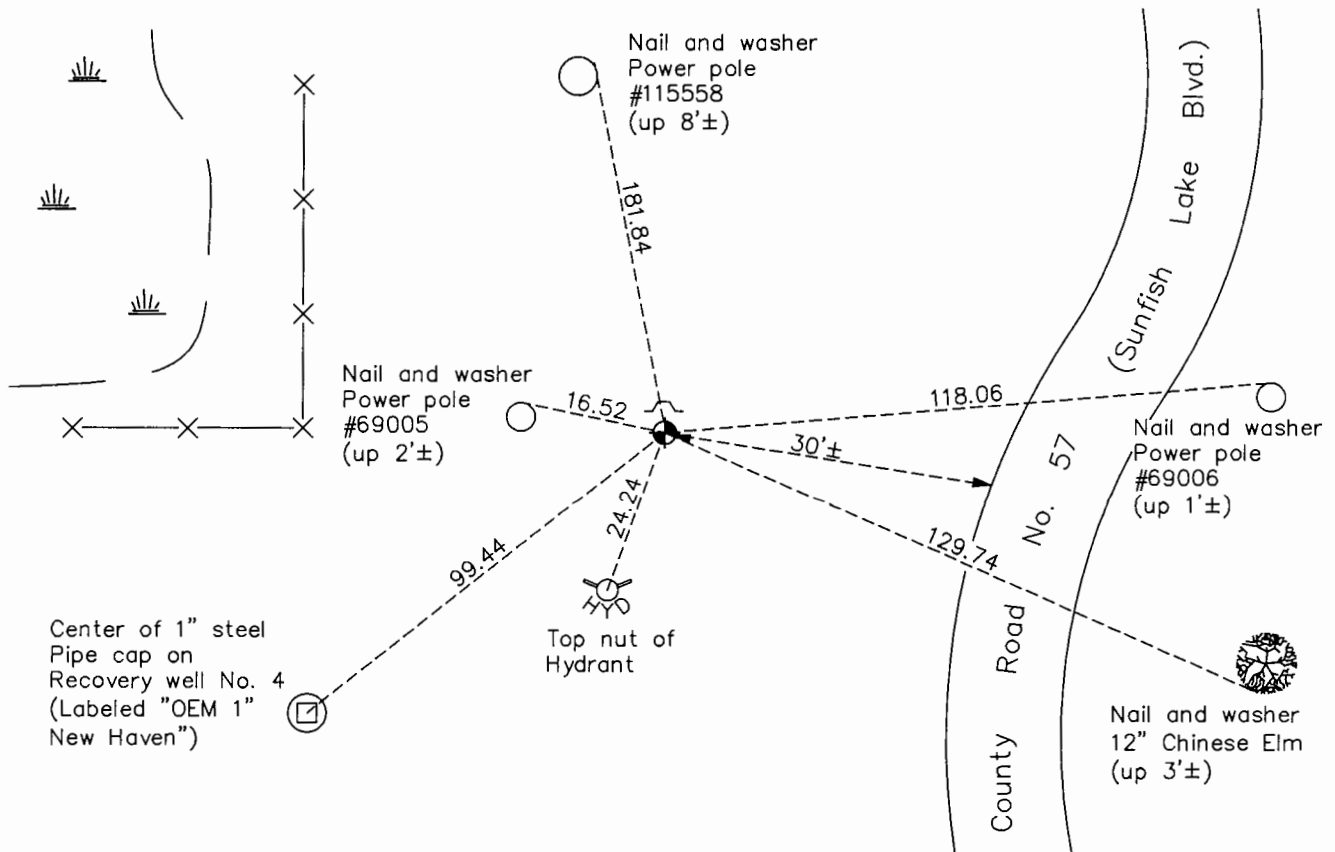
## West 1/4 Corner of Sec. 26 Township 32 Range 25

On the 7th day of June, 1977, the described corner was evidenced by area resurvey

and to perpetuate the location of said corner, at the exact location thereof, a permanent marker was placed consisting of a cast iron monument

AND on the 17th day of August, 2015, said permanent marker was found down 0.1' with a sign and post on the north side and the ties were updated

Updated reference ties are as shown below.



Revision Date

8/16/16

N.A.D. 1983 Coordinates  
(1996 Adjustment)

County Project Coordinates	
Northing	<u>172466.3990</u>
Easting	<u>458082.6741</u>
Date	<u>8/30/99</u>

I hereby certify that this United States public land survey monument record is correct and complete to the best of my knowledge and belief.

*Larry D. Hoium* Date 8/30/16

Larry D. Hoium, Anoka County Surveyor

Minnesota License Number 18165

# HISTORY OF GOVERNMENT CORNER

Page No. 110

County of Anoka

State of Minnesota

## West 1/4 Corner of Sec. 26 Township 32 Range 25

### **CORNER HISTORY:**

August 28, 1959 - Found 1" iron pipe set flush with the surface. Established ties to iron pipe.

August 6, 1964 - Found 1" iron pipe and updated ties.

June 25, 1969 - Replaced 1" iron pipe with a cast iron monument set up 0.1'±. Updated ties.

July 28, 1972 - Found cast iron monument and updated ties.

June 7, 1976 - Set cast iron monument down 0.1'± after road construction using construction ties, date set unknown. Updated ties.

October 31, 1980 - Found cast iron monument and updated ties.

August 17, 1982 - Found cast iron monument and updated ties.

May 16, 1984 - Found cast iron monument and updated ties.

July 17, 1985 - Found cast iron monument and updated ties.

June 16, 1988 - Found cast iron monument and updated ties.

August 12, 1993 - Found cast iron monument and updated ties.

May 24, 1999 - Found cast iron monument and updated ties.

August 30, 1999 - Found cast iron monument and established NAD 1983 (1996 Adjustment) Anoka County Project Coordinates by Static GPS methods.

April 3, 2000 - Set construction ties and removed cast iron monument prior to road construction.

June 9, 2000 - Found cast iron monument, date reset unknown, and updated ties.

April 1, 2010 - Found cast iron monument down 0.1'± with a sign and post on the north side and updated ties.

August 17, 2015 - Found cast iron monument and updated ties. Verified location of corner by VRS GPS methods.