

# CERTIFICATE OF LOCATION OF GOVERNMENT CORNER

County of Anoka

State of Minnesota

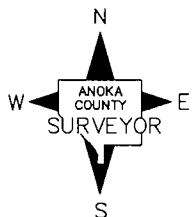
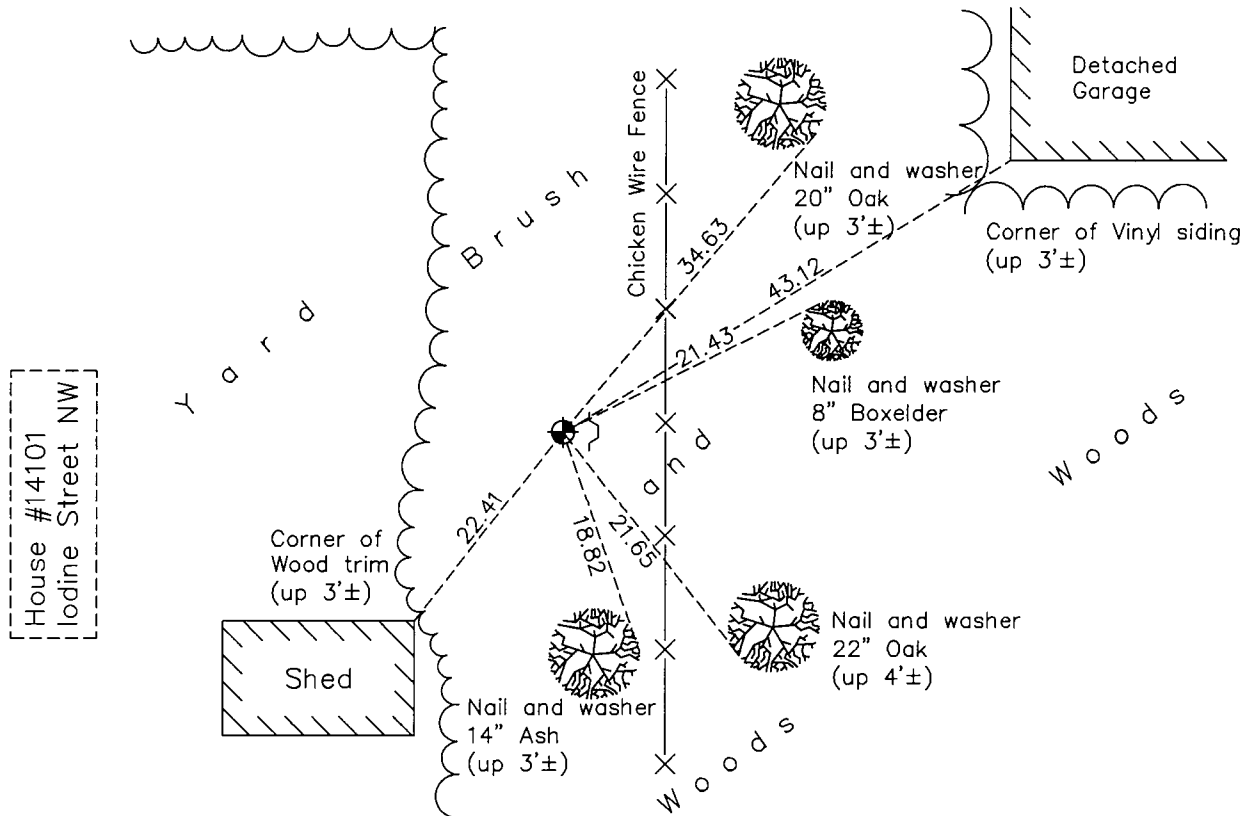
## Northeast Corner of Sec. 35 Township 32 Range 25

On the 9th day of February, 1960, the described corner was evidenced by a pinched iron pipe

and to perpetuate the location of said corner, at the exact location thereof, a permanent marker was placed consisting of a cast iron monument with a sign and post on the east side

AND on the 21st day of October, 2015, said permanent marker was found down 0.2' and the ties were updated

Updated reference ties are as shown below.



Revision Date  
8/17/16

N.A.D. 1983 Coordinates  
(1996 Adjustment)

County Project Coordinates	
Northing	169856.3357
Easting	463256.2582
Date	1/11/00

I hereby certify that this United States public land survey monument record is correct and complete to the best of my knowledge and belief.

*Larry D. Hoium* Date 8/30/16

Larry D. Hoium, Anoka County Surveyor

Minnesota License Number 18165

# HISTORY OF GOVERNMENT CORNER

County of Anoka

State of Minnesota

## Northeast Corner of Sec. 35 Township 32 Range 25

### **CORNER HISTORY:**

February 9, 1960 - Found pinched iron pipe set up 0.2'±. Established ties to iron pipe.

August 12, 1964 - Found cast iron monument and updated ties.

June 24, 1969 - Replaced pinched iron pipe with a cast iron monument set up 0.1'±. Updated ties.

September 2, 1972 - Found cast iron monument and updated ties.

July 8, 1976 - Found cast iron monument and updated ties.

June 26, 1979 - Found cast iron monument and updated ties.

August 23, 1982 - Found cast iron monument and updated ties.

July 29, 1985 - Found cast iron monument and updated ties.

June 30, 1988 - Found cast iron monument and updated ties.

August 16, 1993 - Found cast iron monument and updated ties.

January 11, 2000 - Found cast iron monument with a sign and post on the east side and established NAD 1983 (1996 Adjustment) Anoka County Project Coordinates by Static GPS methods. Updated ties.

June 7, 2010 - Found cast iron monument down 0.2'± and updated ties.

October 21, 2015 - Found cast iron monument down 0.2'± with a sign and post on the east side and updated ties.