

# CERTIFICATE OF LOCATION OF GOVERNMENT CORNER

County of Anoka

State of Minnesota

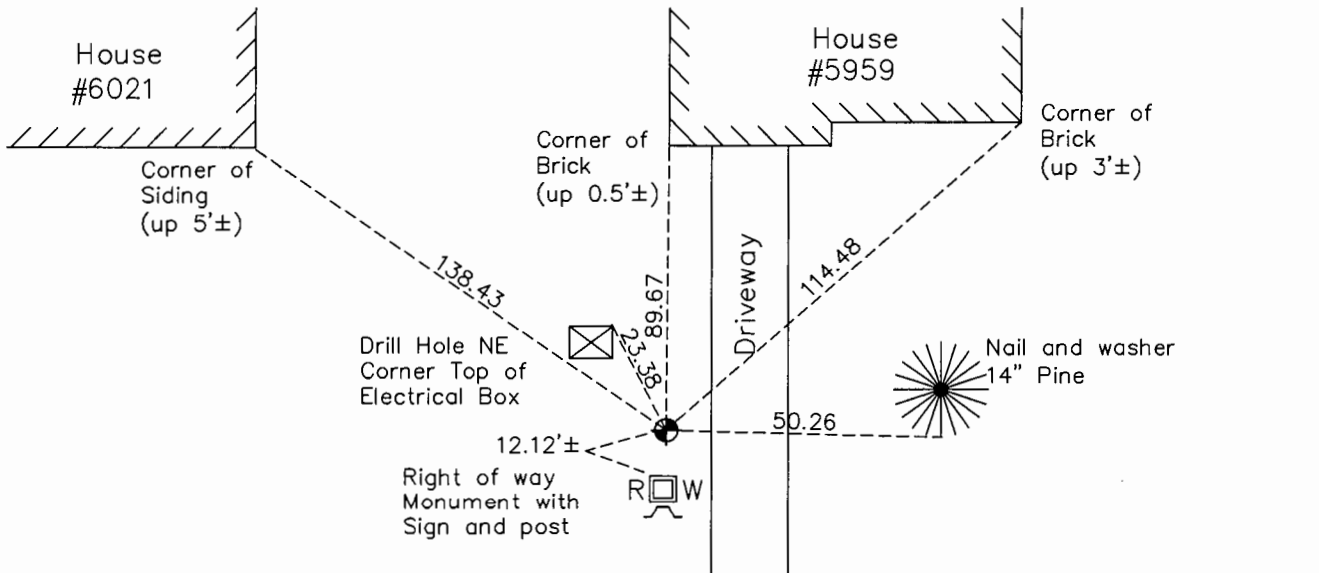
## North $\frac{1}{4}$ Corner of Sec. 35 Township 32 Range 25

On the 2nd day of October, 1964, the described corner was evidenced by a concrete monument

and to perpetuate the location of said corner, at the exact location thereof, a permanent marker was placed consisting of a cast iron monument set above the concrete monument

AND on the 17th day of August, 2015, said permanent marker was found and the ties ties were updated.

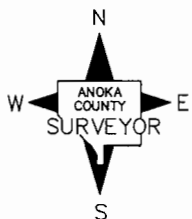
Updated reference ties are as shown below.



C.S.A.H. No. 116 (West Bound)

Concrete Median

C.S.A.H. No. 116 (East Bound)



Revision Date  
8/17/16

N.A.D. 1983 Coordinates  
(1996 Adjustment)

County Project Coordinates	
Northing	169819.4814
Easting	460650.8069
Date	1/11/00

I hereby certify that this United States public land survey monument record is correct and complete to the best of my knowledge and belief.

Date 8/30/16  
 Larry D. Hoium, Anoka County Surveyor  
 Minnesota License Number 18165

## HISTORY OF GOVERNMENT CORNER

County of Anoka

State of Minnesota

North 1/4 Corner of Sec. 35 Township 32 Range 25**CORNER HISTORY:**

September 22, 1945 - Cartwright found concrete monument and established ties to monument.

February 9, 1960 - Found concrete monument down 0.5'± and updated ties.

October 2, 1962 - Found concrete monument down 1'±. Lowered concrete monument and set a cast iron monument on top of it. Cast iron monument was set flush with the surface. Updated ties.

August 7, 1964 - Found cast iron monument and updated ties.

June 24, 1969 - Found cast iron monument flush with the surface and updated ties.

August 2, 1972 - Found cast iron monument and updated ties.

July 8, 1976 - Found cast iron monument and updated ties.

June 22, 1979 - Found cast iron monument and updated ties.

August 17, 1982 - Found cast iron monument and updated ties.

July 24, 1985 - Found cast iron monument and updated ties.

June 30, 1988 - Found cast iron monument and updated ties.

August 4, 1993 - Found cast iron monument and updated ties.

January 11, 2000 - Found cast iron monument and established NAD 1983 (1996 Adjustment) Anoka County Project Coordinates by Static GPS methods. Updated ties.

April 1, 2010 - Found cast iron monument with top broken off.

January 25, 2011 - Replaced broken cast iron monument with a solid cast iron monument after exposing the concrete monument below and verifying location of corner by Static GPS methods. Verified location of new cast iron monument by VRS GPS methods. Updated ties.

August 17, 2015 - Found cast iron monument and updated ties. Verified location of corner by VRS GPS methods.