

CERTIFICATE OF LOCATION OF GOVERNMENT CORNER

County of Anoka

State of Minnesota

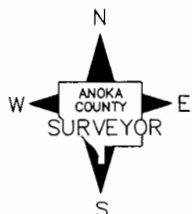
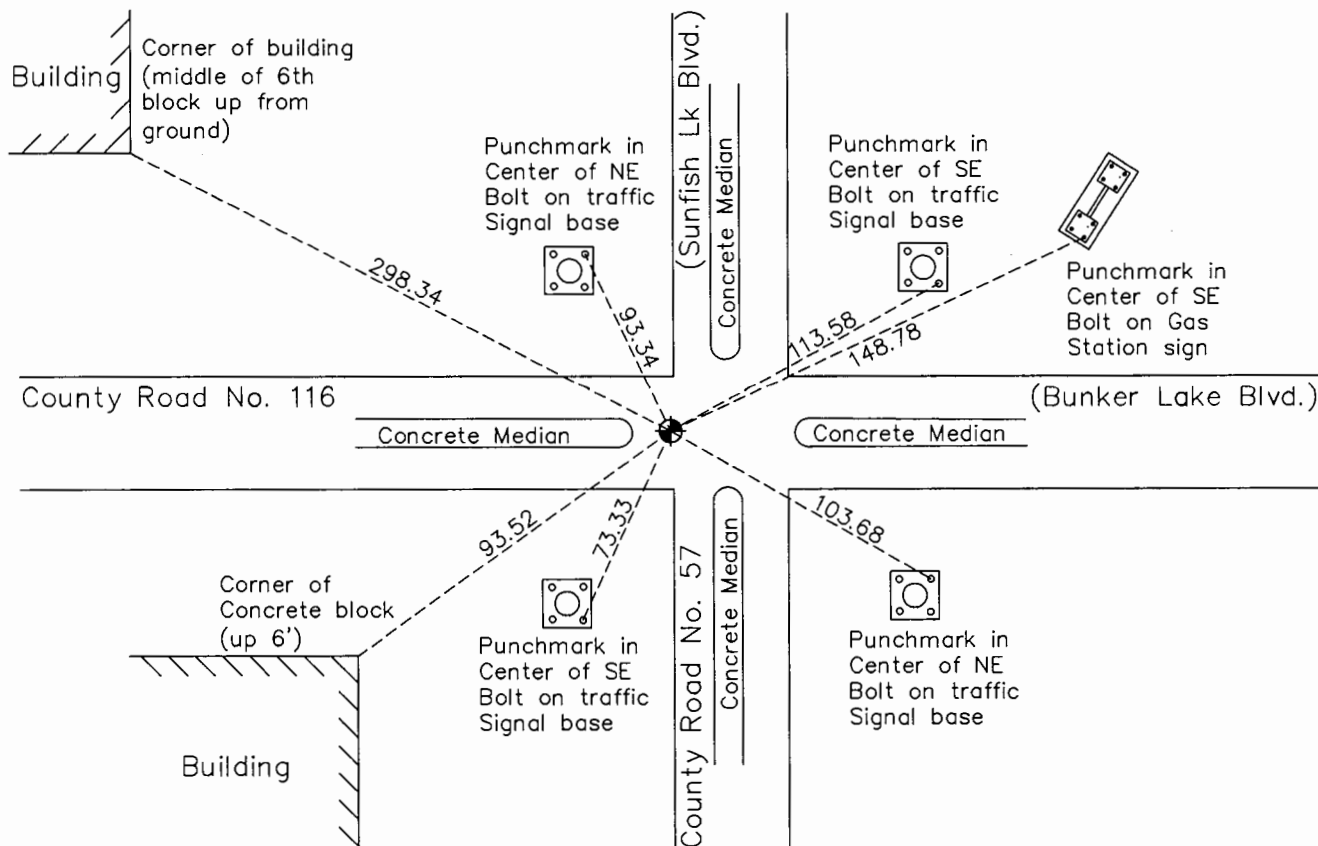
Northwest Corner of Sec. 35 Township 32 Range 25

On the 21st day of April, 1961, the described corner was evidenced by a concrete monument

and to perpetuate the location of said corner, at the exact location thereof, a permanent marker was placed consisting of a cast iron monument

AND on the 17th day of August, 2015, said permanent marker was found and the ties were updated. PK Nails 2.00' North and West of Monument.

Updated reference ties are as shown below.



Revision Date
8/17/16

N.A.D. 1983 Coordinates
(1996 Adjustment)

County Project Coordinates	
Northing	169803.1345
Easting	458063.2075
Date	8/30/99

I hereby certify that this United States public land survey monument record is correct and complete to the best of my knowledge and belief.

Larry D. Hoium Date 8/30/16

Larry D. Hoium, Anoka County Surveyor
Minnesota License Number 18165

HISTORY OF GOVERNMENT CORNER

County of Anoka

State of Minnesota

Northwest Corner of Sec. 35 Township 32 Range 25

CORNER HISTORY:

September 22, 1945 - Cartwright found concrete monument down 1'±. Established ties to monument.

September 11, 1957 - Cartwright and Olson found concrete monument down 1'± and updated ties.

February 9, 1960 - Found concrete monument down 1'± and updated ties.

April 21, 1961 - Found concrete monument down 0.8'± with a 1/2" iron pipe on the east face of monument. Set reference iron pipes due to grading of road.

April 29, 1965 - Found concrete monument down 0.6'±. Set top 0.6' section of cast iron monument above concrete monument and flush with the surface. Also set P.K. nails 2.00' north and east of monument and updated ties.

June 23, 1969 - Found cast iron monument and updated ties.

July 28, 1972 - Found cast iron monument and updated ties.

August 6, 1974 - Updated ties to cast iron monument flush with the surface prior to road construction.

June 7, 1976 - Set cast iron monument down 0.2'± after road construction using ties. Updated ties.

June 22, 1979 - Found cast iron monument and updated ties.

August 23, 1982 - Found cast iron monument and updated ties.

July 17, 1985 - Found cast iron monument and updated ties.

June 16, 1988 - Found cast iron monument and updated ties.

August 4, 1993 - Found cast iron monument and updated ties.

August 30, 1999 - Found cast iron monument and established NAD 1983 (1996 Adjustment) Anoka County Project Coordinates by Static GPS methods. Updated ties.

July 29, 2002 - Set construction ties and removed cast iron monument prior to road construction.

October 3, 2002 - Set cast iron monument after road construction using construction ties. Updated ties.

April 5, 2010 - Found cast iron monument and updated ties.

November 16, 2012 - Found cast iron monument and updated ties. Verified location of corner by VRS GPS methods.

August 17, 2015 - Found cast iron monument and updated ties. Set P.K. nails 2.00' north and west of monument and verified location of corner by VRS GPS methods.