

CERTIFICATE OF LOCATION OF GOVERNMENT CORNER

County of Anoka

State of Minnesota

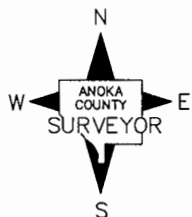
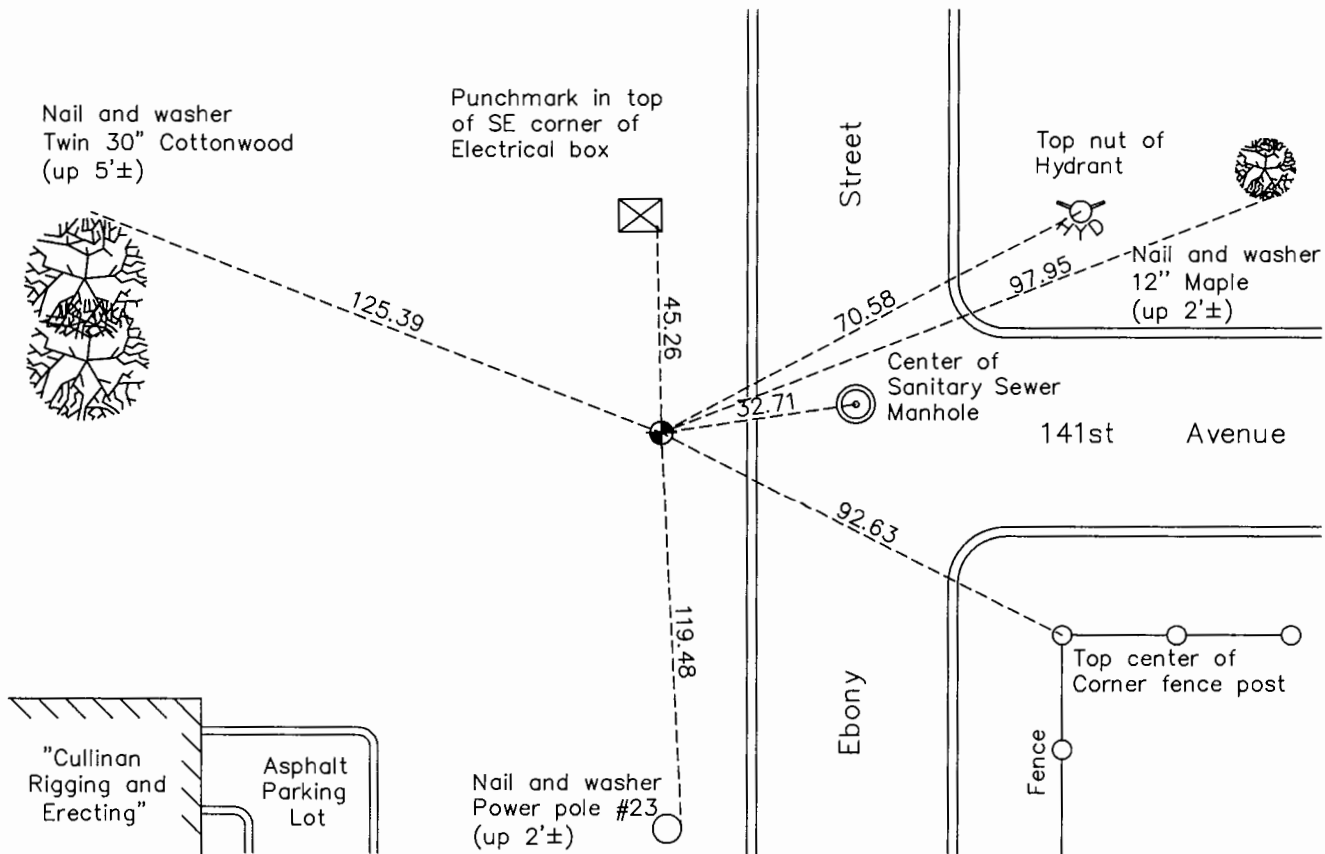
South 1/4 Corner of Sec. 27 Township 32 Range 25

On the 5th day of January, 1961, the described corner was evidenced by a 2" iron pipe

and to perpetuate the location of said corner, at the exact location thereof, a permanent marker was placed consisting of 1/2" Iron Pipe with LS#24332 and LS#43808

AND on the 15th day of September, 2015, said permanent marker was replaced with a Cast Iron Monument and the ties were updated.

Updated reference ties are as shown below.



Revision Date
8/17/16

N.A.D. 1983 Coordinates
(1996 Adjustment)

County Project Coordinates	
Northing	169809.4406
Easting	455449.0495
Date	5/05/00

I hereby certify that this United States public land survey monument record is correct and complete to the best of my knowledge and belief.

Larry D. Hoium Date 8/30/16

Larry D. Hoium, Anoka County Surveyor

Minnesota License Number 18165

HISTORY OF GOVERNMENT CORNER

County of Anoka

State of Minnesota

South 1/4 Corner of Sec. 27 Township 32 Range 25

CORNER HISTORY:

July 7, 1946 - Cartwright found concrete monument and established ties to monument.

January 5, 1961 - Found 2" iron pipe flush with the surface at bottom of cut. Concrete monument is missing. Updated ties.

April 25, 1969 - Reset position of corner with cast iron monument set flush with the surface using area resurvey. Set steel fence post up 3'± on north side of monument. Updated ties.

August 7, 1972 - Found cast iron monument and updated ties.

July 8, 1976 - Found cast iron monument and updated ties.

June 26, 1979 - Found cast iron monument and updated ties.

May 20, 1983 - Reset position of corner with cast iron monument and updated ties. Set sign and post on north side of monument.

August 19, 1993 - Found cast iron monument and updated ties.

May, 5, 2000 - Found cast iron monument with a sign and post on the north side and established NAD 1983 (1996 Adjustment) Anoka County Project Coordinates by Static GPS methods. Updated ties.

May 29, 2001 - Set construction ties and removed cast iron monument prior to road construction.

September 18, 2002 - Found cast iron monument with a sign and post on the west side and updated ties.

Date unknown - Found 1/2" iron pipe and updated ties. Sign and post is missing.

August 17, 2015 - Found 1/2" iron pipe and updated ties. Sign and post is missing.

September 11, 2015 - Verified location of 1/2" iron pipe by Static GPS methods.

September 15, 2015 - Replaced 1/2" iron pipe with a cast iron monument and updated ties. Verified location of corner by VRS GPS methods.