

CERTIFICATE OF LOCATION OF GOVERNMENT CORNER

County of Anoka

State of Minnesota

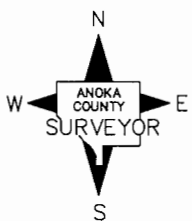
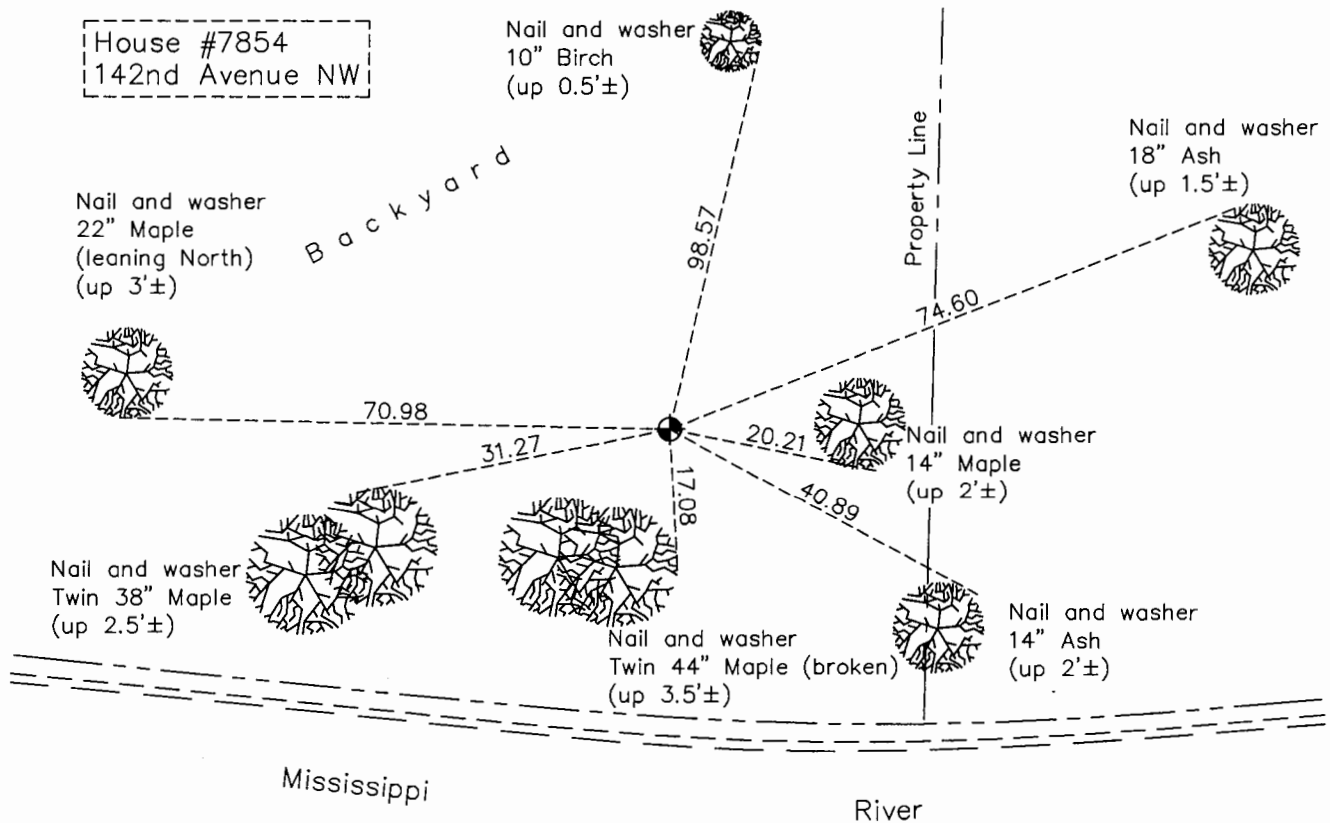
Witness Corner of Sec. 33 Township 32 Range 25
 (On north line of NW1/4)

On the 17th day of April, 1962, the described corner was evidenced by a 4" square concrete monument

and to perpetuate the location of said corner, at the exact location thereof, a permanent marker was placed consisting of a cast iron monument

AND on the 20th day of October, 2015, said permanent marker was found down 0.5'± and the ties were updated

Updated reference ties are as shown below.



Revision Date
8/17/16

N.A.D. 1983 Coordinates
 (1996 Adjustment)

County Project Coordinates	
Northing	<u>169787.7692</u>
Easting	<u>448591.8391</u>
Date	<u>4/26/00</u>

I hereby certify that this United States public land survey monument record is correct and complete to the best of my knowledge and belief.

Larry D. Hoium Date 8/30/16

Larry D. Hoium, Anoka County Surveyor
 Minnesota License Number 18165

HISTORY OF GOVERNMENT CORNER

Page No. 121

County of Anoka

State of Minnesota

Witness Corner of Sec. 33 Township 32 Range 25
(On north line of NW1/4)

CORNER HISTORY:

May 10, 1944 - Cartwright found concrete monument and established ties to monument.

April 17, 1962 - Found 4" square concrete monument flush with the surface and updated ties.

June 26, 1969 - Found concrete monument and updated ties.

August 7, 1972 - Found concrete monument and updated ties.

July 8, 1976 - Found concrete monument and updated ties.

June 22, 1979 - Found concrete monument and updated ties.

August 15, 1985 - Replaced broken concrete monument with a cast iron monument set down 0.3'±. Updated ties.

June 27, 1988 - Found cast iron monument and updated ties.

August 20, 1993 - Found cast iron monument and updated ties.

April 26, 2000 - Found cast iron monument and established NAD 1983 (1996 Adjustment) Anoka County Project Coordinates by Static GPS methods. Updated ties.

May 19, 2010 - Found cast iron monument and updated ties.

October 20, 2015 - Found cast iron monument down 0.5'± and updated ties.