

CERTIFICATE OF LOCATION OF GOVERNMENT CORNER

County of Anoka

State of Minnesota

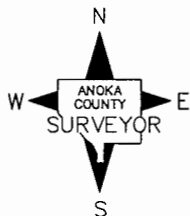
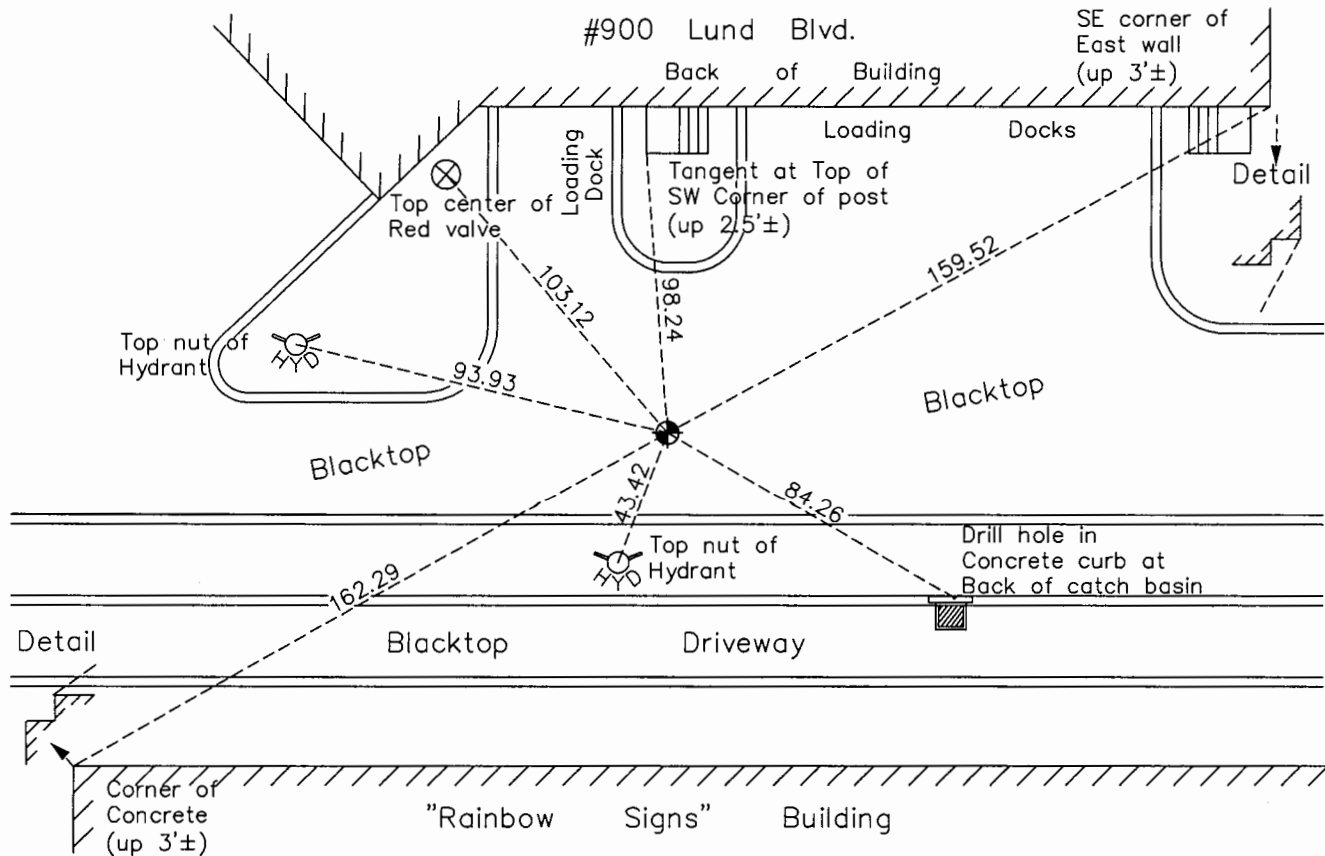
East 1/4 Corner of Sec. 35 Township 32 Range 25

On the 19th day of April, 1962, the described corner was evidenced by a 4"X4"
concrete monument

and to perpetuate the location of said corner, at the exact location thereof, a permanent marker
 was placed consisting of a cast iron monument

AND on the 22nd day of October, 2015, said permanent marker was found flush with the
surface and the ties were updated

Updated reference ties are as shown below.



Revision Date
8/30/16

N.A.D. 1983 Coordinates
 (1996 Adjustment)

County Project Coordinates	
Northing	167200.5583
Easting	463244.7317
Date	4/17/00

I hereby certify that this United States public land survey monument record is correct and complete to the best of my knowledge and belief.

Larry D. Hoium Date 8/30/16

Larry D. Hoium, Anoka County Surveyor

Minnesota License Number 18165

HISTORY OF GOVERNMENT CORNER

County of Anoka

State of Minnesota

East 1/4 Corner of Sec. 35 Township 32 Range 25

CORNER HISTORY:

May 16, 1945 - Cartwright found concrete monument and established ties to monument.

April 19, 1962 - Found 4" square concrete monument down 0.5'± and updated ties.

August 12, 1964 - Found concrete monument and updated ties.

June 26, 1969 - Found concrete monument and updated ties. Set iron rod up 1'± on southeast side of monument.

August 8, 1972 - Found concrete monument and updated ties.

July 8, 1976 - Found concrete monument and updated ties.

June 27, 1979 - Found concrete monument and updated ties.

August 17, 1982 - Found concrete monument and updated ties.

July 8, 1988 - Set construction ties prior to road construction. Updated ties.

August 11, 1993 - Found concrete monument and updated ties.

October 25, 1996 - Updated and added ties prior to road construction. Set sign and post on the north side of monument.

April 17, 2000 - Found concrete monument missing. Reset position of corner with a cast iron monument and established NAD 1983 (1996 Adjustment) Anoka County Project Coordinates by Static GPS methods. Updated ties.

April 5, 2010 - Found cast iron monument and updated ties.

October 22, 2015 - Found cast iron monument flush with the surface and updated ties. Verified location of corner by VRS GPS methods.